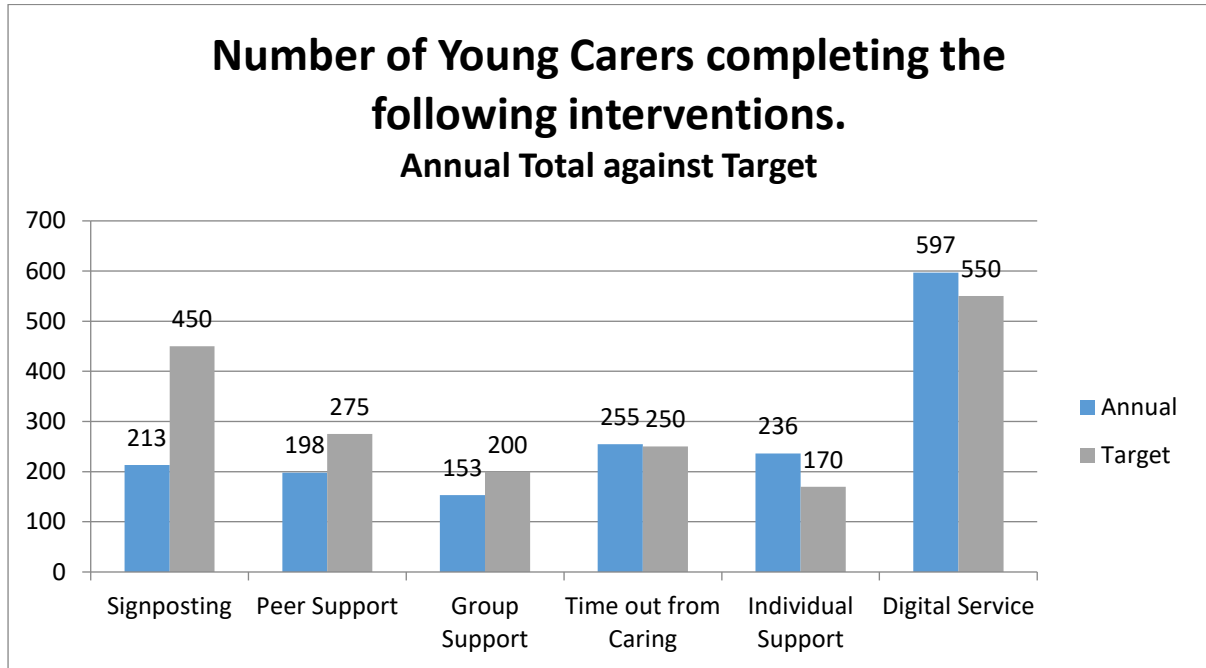
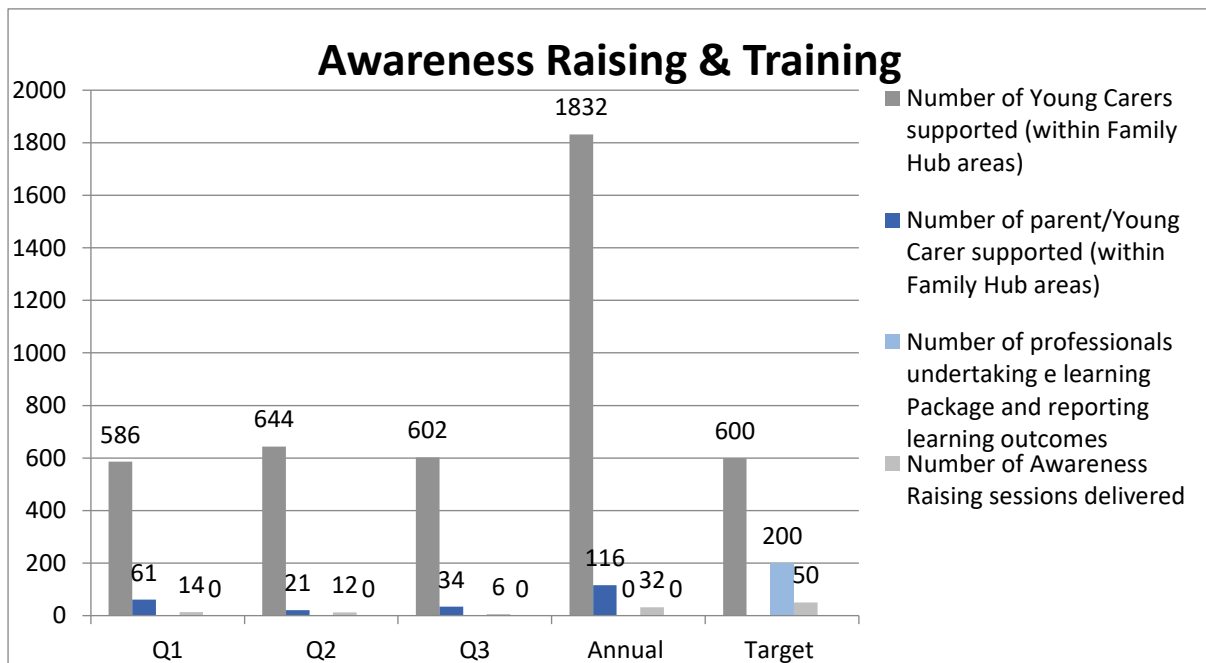


**Data for the year 2020 – 2021 Quarters 1-3 Appendix 2**

**Number of Young carers completing the interventions against targets – there is still a quarter of this year left to add to this data**

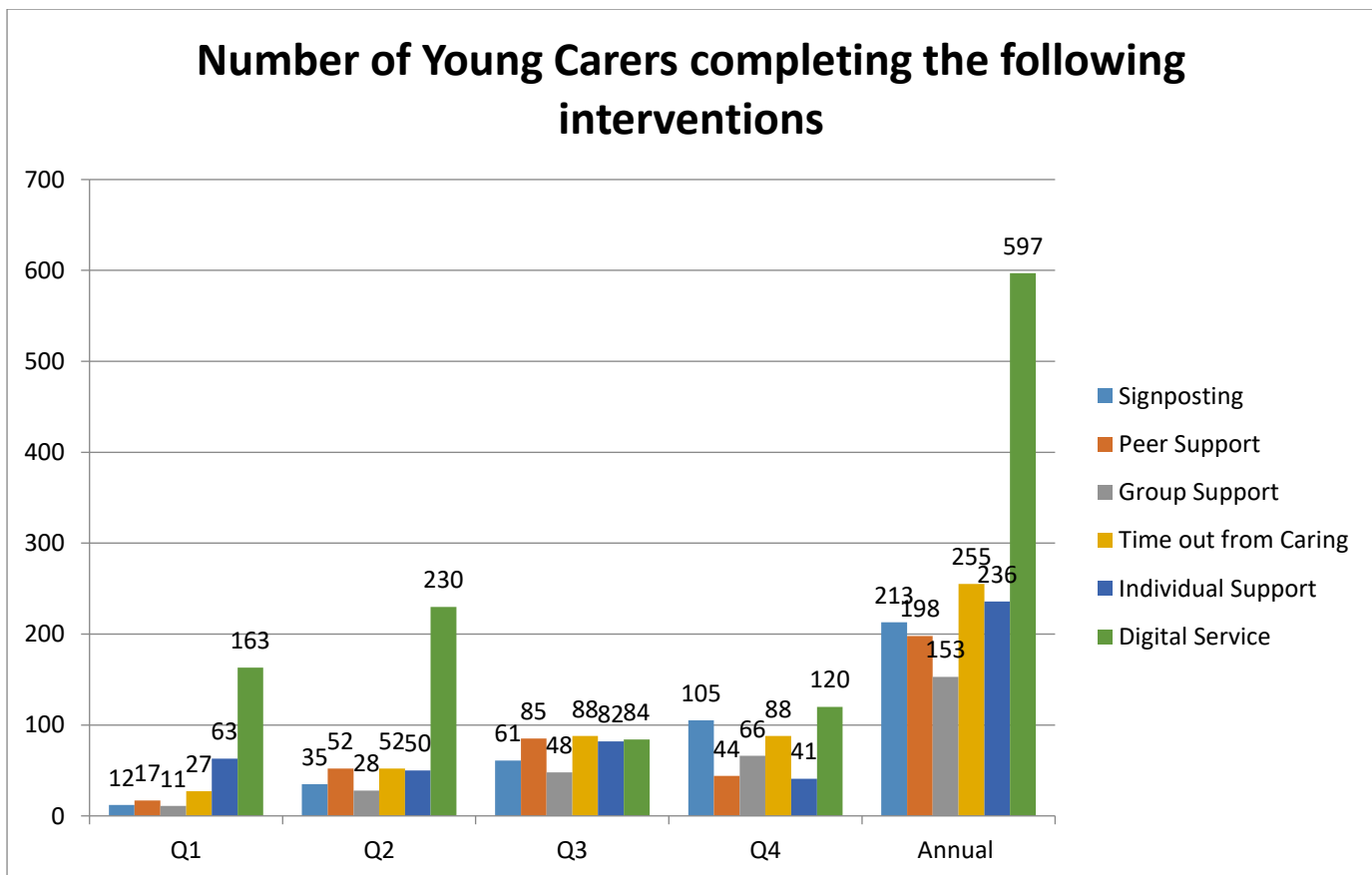
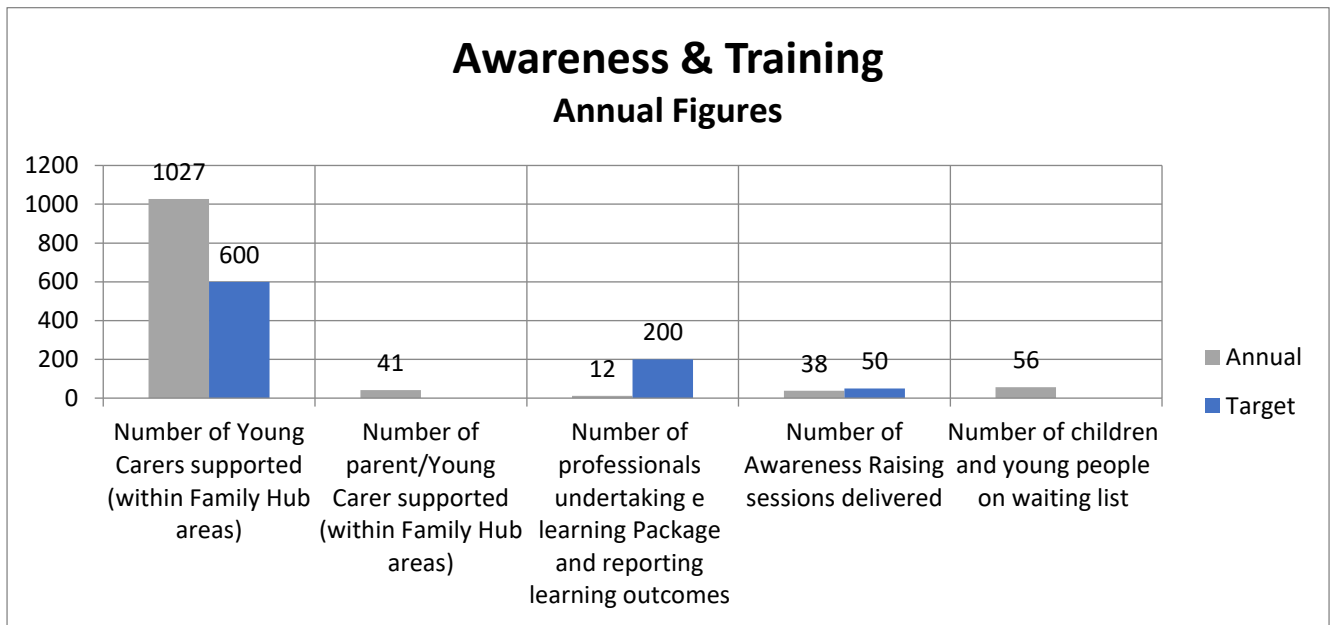


There is still a quarter to go on this chart and the target is more fully explained in chart 3



**Chart 3 explains more fully the target**

**Chart 3**



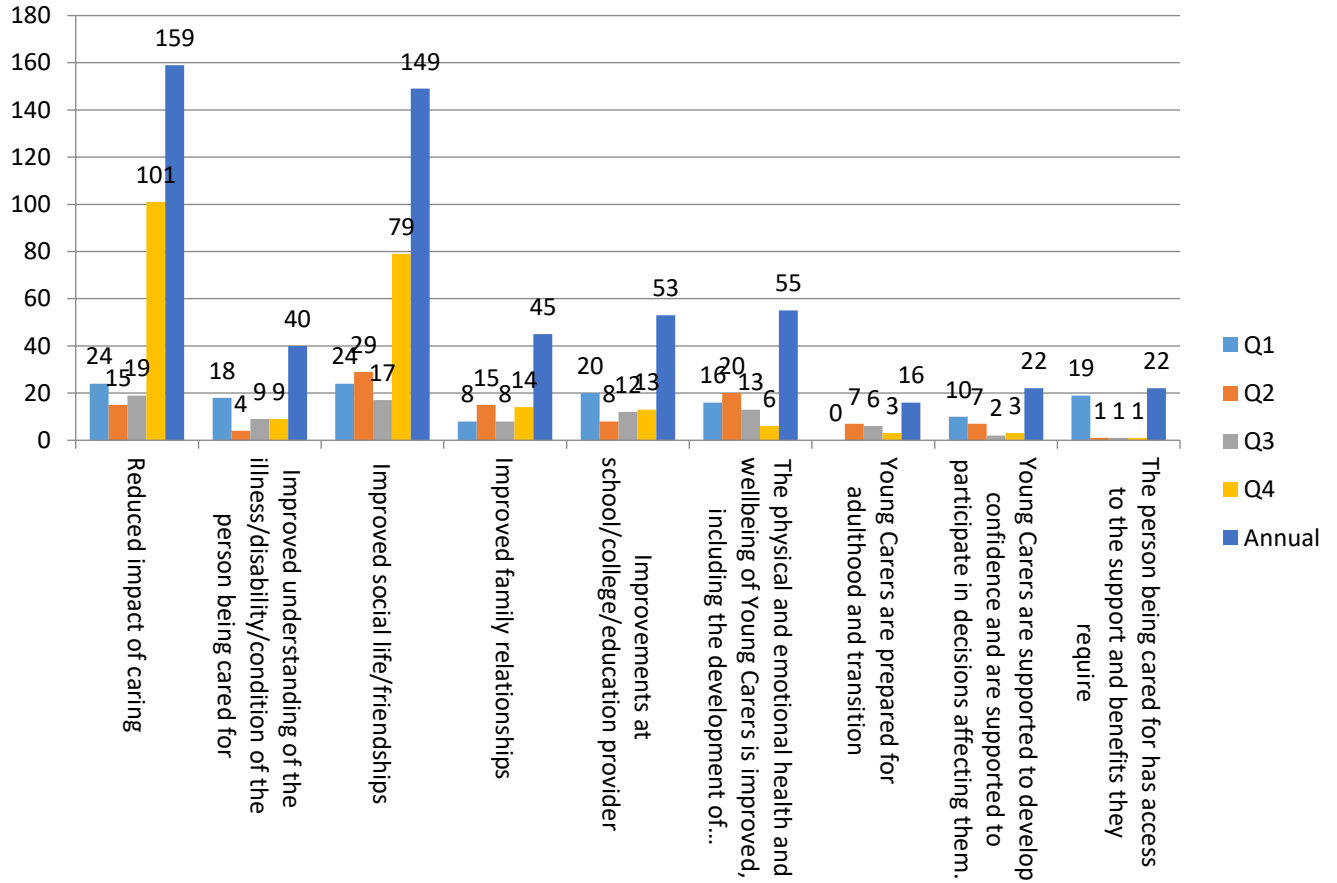
The following chart Part 3 demonstrates the Number and Percentage figures for the year so far 2021/2022 – NB there is one quarter remaining.

| <b>Part 3</b>  |               |            |                    |
|--|---------------|------------|--------------------|
| <b>Number and %of C&amp;YC reported</b>  | <b>Number</b> | <b>%</b>   | <b>Target in %</b> |
| Reduced impact of caring   | <b>324</b>    | <b>69%</b> | <b>60</b>          |
| Improved understanding of the illness/disability/condition of the person being cared for                             | <b>105</b>    | <b>63%</b> | <b>60</b>          |
| Improved social life/friendships   | <b>258</b>    | <b>62%</b> | <b>60</b>          |
| Improved family relationships  | <b>142</b>    | <b>71%</b> | <b>60</b>          |
| Improvements at school/college/education provider  | <b>88</b>     | <b>62%</b> | <b>60</b>          |
| The physical and emotional health and wellbeing of Young Carers is improved, including the development of resilience | <b>263</b>    | <b>65%</b> | <b>60</b>          |
| Young Carers are prepared for adulthood and transition   | <b>59</b>     | <b>83%</b> | <b>60</b>          |
| Young Carers are supported to develop confidence and are supported to participate in decisions affecting them.       | <b>150</b>    | <b>90%</b> | <b>60</b>          |
| The person being cared for has access to the support and benefits they require                                       | <b>53</b>     | <b>93%</b> | <b>60</b>          |

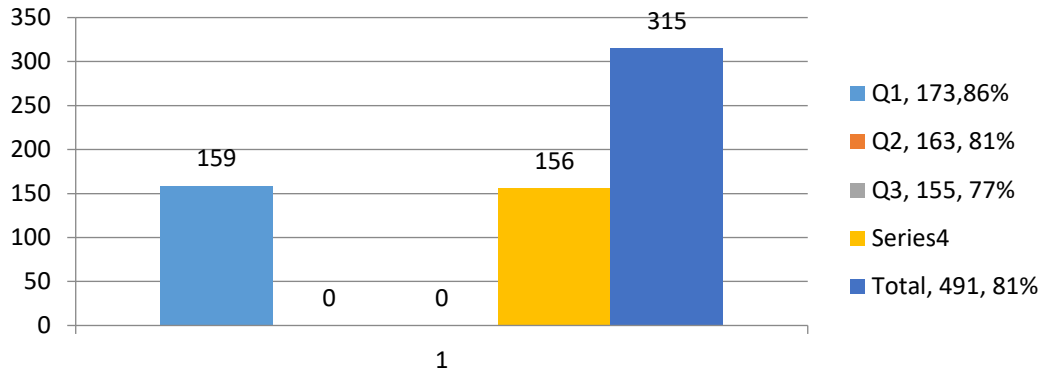
The chart below shows the same comparative data for 2020/2021  
Number in chart A

Chart A – the number is dark blue is the annual figure.

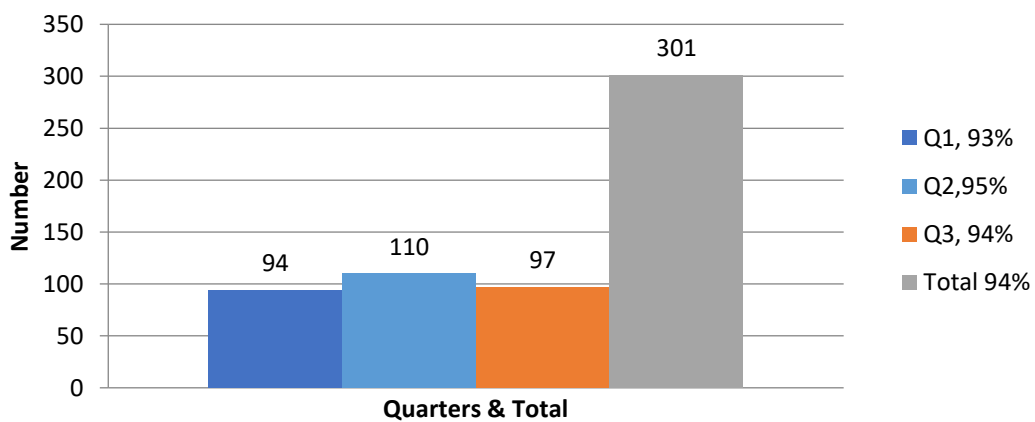
## 2020/2021 Number of Children & Young People Reporting the following:



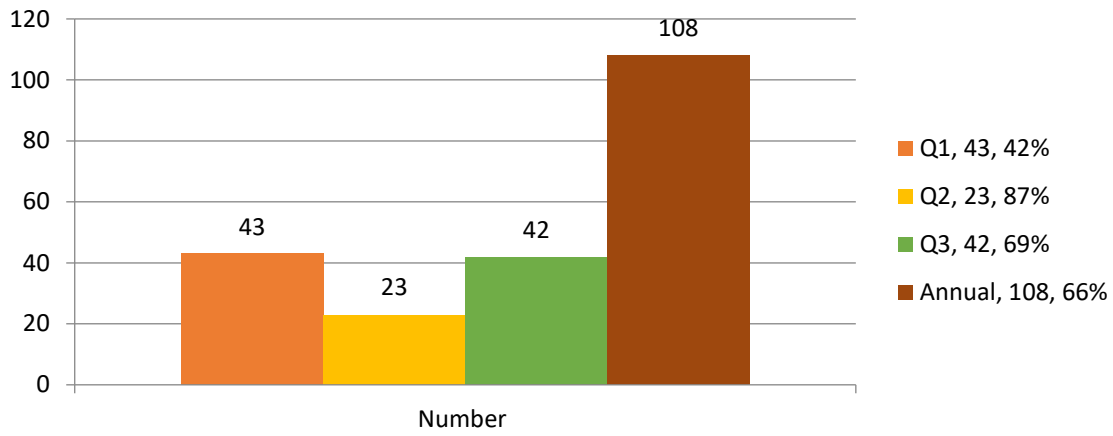
## Worked with 95% of Primary Schools in the district to develop and maintain Young Carers Champions



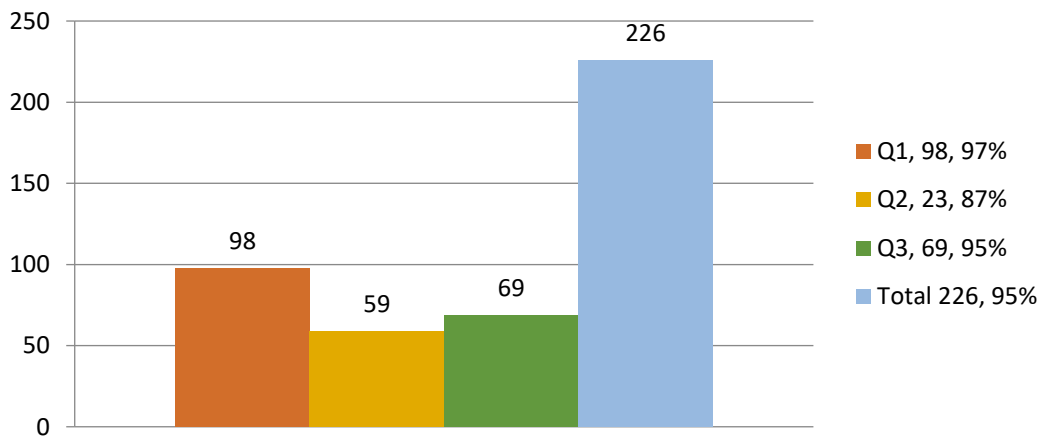
## 90% of Service Users report overall satisfaction with the service



80% of assessments to be completed within 15 working days of the case being allocated.



80% of referrals to be allocated within 5 days



# Awareness Raising & Training

