

## Report of the Director of Finance to the meeting of Governance and Audit to be held on 26 November 2020

---

N

**Subject:**

Treasury Management Mid-Year Review up to 30 September 2020

**Summary statement:**

This report shows the Council's Treasury Mid-Year Review up to 30 September 2020.

---

Chris Chapman  
Director of Finance

Report Contact: David Willis  
Phone: (01274) 432361  
E-mail: [David.Willis@Bradford.gov.uk](mailto:David.Willis@Bradford.gov.uk)

**Portfolio:**  
Leader of the Council and Corporate

**Overview & Scrutiny Area:**  
Corporate

# Treasury Management Review up to 30 September 2020

## Background

### 1.1 Treasury management

The Council operates a balanced budget, which broadly means cash raised during the year will meet its cash expenditure. Part of the treasury management operations ensure this cash flow is adequately planned, with surplus monies being invested in low risk counterparties, providing adequate liquidity initially before considering optimising investment return.

The second main function of the treasury management service is the funding of the Council's capital plans. These capital plans provide a guide to the borrowing need of the Council, essentially the longer term cash flow planning to ensure the Council can meet its capital spending operations. This management of longer term cash may involve arranging long or short term loans, or using longer term cash flow surpluses, and on occasion any debt previously drawn may be restructured to meet Council risk or cost objectives.

Accordingly, treasury management is defined as:

“The management of the local authority's borrowing, investments and cash flows, its banking, money market and capital market transactions; the effective control of the risks associated with those activities; and the pursuit of optimum performance consistent with those risks.”

### 1.2 Introduction

This report has been written in accordance with the requirements of the Chartered Institute of Public Finance and Accountancy's (CIPFA) Code of Practice on Treasury Management (revised 2017).

The primary requirements of the Code are as follows:

1. Creation and maintenance of a Treasury Management Policy Statement which sets out the policies and objectives of the Council's treasury management activities.
2. Creation and maintenance of Treasury Management Practices which set out the manner in which the Council will seek to achieve those policies and objectives.
3. Receipt by the full Council of an annual Treasury Management Strategy Statement - including the Annual Investment Strategy and Minimum Revenue Provision Policy - for the year ahead, a Mid-Year Review Report and an Annual Report, (stewardship report), covering activities during the previous year.
4. Delegation by the Council of responsibilities for implementing and monitoring treasury management policies and practices and for the execution and administration of treasury management decisions.
5. Delegation by the Council of the role of scrutiny of treasury management strategy and policies to a specific named body. For this Council the delegated body is Governance and Audit Committee:

This mid-year report has been prepared in compliance with CIPFA's Code of Practice on Treasury Management, and covers the following:

- An economic update for the first half of the 2020/21 financial year.

- A review of the Treasury Management Strategy Statement and Annual Investment Strategy.
- The Council's capital expenditure, as set out in the Capital Strategy, and prudential indicators.
- A review of the Council's investment portfolio for 2020/21.
- A review of the Council's borrowing strategy for 2020/21.
- A review of any debt rescheduling undertaken during 2020/21.
- A review of compliance with Treasury and Prudential Limits for 2020/21.

## 2. Economics and interest rates

### 2.1 Economics update

- **UK (prior to new lockdown announcement for 5 November 2020).** As expected, the Bank of England's Monetary Policy Committee (MPC) kept Bank Rate unchanged on 17th September. It also kept unchanged the level of quantitative easing at £745bn. Its forecasts were optimistic in terms of three areas:
  - The fall in **GDP** in the first half of 2020 was revised from 28% to 23%. This is still one of the largest falls in output of any developed nation. However, it is only to be expected as the UK economy is heavily skewed towards consumer-facing services – an area which was particularly vulnerable to being damaged by lockdown.
  - The peak in the **unemployment rate** was revised down from 9% in Q2 to 7½% by Q4 2020.
  - It forecast that there would be excess demand in the economy by Q3 2022 causing CPI **inflation** to rise above the 2% target in Q3 2022, (based on market interest rate expectations for a further loosening in policy). Nevertheless, even if the Bank were to leave policy unchanged, inflation was still projected to be above 2% in 2023.
- It also squashed any idea of using **negative interest rates**, at least in the next six months or so. It suggested that while negative rates can work in some circumstances, it would be “less effective as a tool to stimulate the economy” at this time when banks are worried about future loan losses. It also has “other instruments available”, including QE and the use of forward guidance.
- The MPC still expects the £300bn of **quantitative easing** (QE) purchases announced between its March and June meetings to continue until the “turn of the year”. This implies that the pace of purchases will slow further to about £4bn a week, down from £14bn a week at the height of the crisis and £7bn more recently.
- In conclusion, this would indicate that the Bank can now just *sit on its hands* as the economy is recovering better than expected. However, the MPC acknowledged that the “medium-term projections were a less informative guide than usual” and the minutes had multiple references to **downside risks**, which were judged to persist both in the short and medium term. One has only to look at the potential for a second wave of the virus to see the dangers. However, rather than a national lockdown, as in March, any spikes in virus infections are now likely to be dealt with by localised measures and this should limit the amount of economic damage caused. In addition, Brexit uncertainties ahead of the year-end deadline are likely to be a drag on recovery. The wind down in the furlough scheme through to the end of October is another development that could cause the Bank to review the need for more support for the economy later in the year. Admittedly, the Chancellor announced in late September a second six-month package from 1<sup>st</sup> November of government support for jobs whereby it will pay up to 22% of the costs of retaining an employee working a minimum of one third of their normal hours. There was further help for the self-employed, freelancers and the hospitality industry. However, this is a much less generous scheme than the furlough package and will

inevitably mean there will be further job losses from the 11% of the workforce still on furlough in mid-September.

- Overall, **the pace of recovery** is not expected to be in the form of a rapid V shape, but a more elongated and prolonged one after a sharp recovery in June through to August which left the economy 11.7% smaller than in February. The last three months of 2020 are now likely to show no growth as consumers will probably remain cautious in spending and uncertainty over the outcome of the UK/EU trade negotiations concluding at the end of the year will also be a headwind. If the Bank felt it did need to provide further support to recovery, then it is likely that the tool of choice would be more QE.
- There will be some **painful longer term adjustments** as e.g. office space and travel by planes, trains and buses may not recover to their previous level of use for several years, or possibly ever. There is also likely to be a reversal of globalisation as this crisis has shown up how vulnerable long-distance supply chains are. On the other hand, digital services are one area that has already seen huge growth.
- One key addition to **the Bank's forward guidance** was a new phrase in the policy statement, namely that "it does not intend to tighten monetary policy until there is clear evidence that significant progress is being made in eliminating spare capacity and achieving the 2% target sustainably". That seems designed to say, in effect, that even if inflation rises to 2% in a couple of years' time, do not expect any action from the MPC to raise Bank Rate – until they can clearly see that level of inflation is going to be persistently above target if it takes no action to raise Bank Rate
- The **Financial Policy Committee** (FPC) report on 6<sup>th</sup> August revised down their expected credit losses for the banking sector to "somewhat less than £80bn". It stated that in its assessment "banks have buffers of capital more than sufficient to absorb the losses that are likely to arise under the MPC's central projection". The FPC stated that for real stress in the sector, the economic output would need to be twice as bad as the MPC's projection, with unemployment rising to above 15%.
- **USA.** The incoming sets of data during the first week of August were almost universally stronger than expected. With the number of new daily coronavirus infections beginning to abate, recovery from its contraction this year of 10.2% should continue over the coming months and employment growth should also pick up again. However, growth will be dampened by continuing outbreaks of the virus in some states leading to fresh localised restrictions. At its end of August meeting, the Fed tweaked **its inflation target** from 2% to maintaining an average of 2% over an unspecified time period i.e. following periods when inflation has been running persistently below 2%, appropriate monetary policy will likely aim to achieve inflation moderately above 2% for some time. This change is aimed to provide more stimulus for economic growth and higher levels of employment and to avoid the danger of getting caught in a deflationary "trap" like Japan. It is to be noted that inflation has actually been under-shooting the 2% target significantly for most of the last decade so financial markets took note that higher levels of inflation are likely to be in the pipeline; long term bond yields duly rose after the meeting. The Fed also called on Congress to end its political disagreement over providing more support for the unemployed as there is a limit to what monetary policy can do compared to more directed central government fiscal policy. The FOMC's updated economic and

rate projections in mid-September showed that officials expect to leave the fed funds rate at near-zero until at least end-2023 and probably for another year or two beyond that. There is now some expectation that where the Fed has led in changing its inflation target, other major central banks will follow. The increase in tension over the last year between the US and China is likely to lead to a lack of momentum in progressing the initial positive moves to agree a phase one trade deal.

- **EU.** The economy was recovering well towards the end of Q2 after a sharp drop in GDP, (e.g. France 18.9%, Italy 17.6%). However, the second wave of the virus affecting some countries could cause a significant slowdown in the pace of recovery, especially in countries more dependent on tourism. The fiscal support package, eventually agreed by the EU after prolonged disagreement between various countries, is unlikely to provide significant support and quickly enough to make an appreciable difference in weaker countries. The ECB has been struggling to get inflation up to its 2% target and it is therefore expected that it will have to provide more monetary policy support through more quantitative easing purchases of bonds in the absence of sufficient fiscal support.
- **China.** After a concerted effort to get on top of the virus outbreak in Q1, economic recovery was strong in Q2 and has enabled it to recover all of the contraction in Q1. However, this was achieved by major central government funding of yet more infrastructure spending. After years of growth having been focused on this same area, any further spending in this area is likely to lead to increasingly weaker economic returns. This could, therefore, lead to a further misallocation of resources which will weigh on growth in future years.
- **Japan.** There are some concerns that a second wave of the virus is gaining momentum and could dampen economic recovery from its contraction of 8.5% in GDP. It has been struggling to get out of a deflation trap for many years and to stimulate consistent significant GDP growth and to get inflation up to its target of 2%, despite huge monetary and fiscal stimulus. It is also making little progress on fundamental reform of the economy. The resignation of Prime Minister Abe is not expected to result in any significant change in economic policy.
- **World growth.** Latin America and India are currently hotspots for virus infections. World growth will be in recession this year. Inflation is unlikely to be a problem for some years due to the creation of excess production capacity and depressed demand caused by the coronavirus crisis.

## 2.2 Interest rate forecasts

The Council's treasury advisor, Link Group, has provided the following forecasts (PWLBRates are certainty rates):

Link Group Interest Rate View 11.8.20											
	Sep-20	Dec-20	Mar-21	Jun-21	Sep-21	Dec-21	Mar-22	Jun-22	Sep-22	Dec-22	Mar-23
Bank Rate View	0.10	0.10	0.10	0.10	0.10	0.10	0.10	0.10	0.10	0.10	0.10
3 Month average earnings	0.10	0.10	0.10	0.10	0.10	0.10	0.10	-	-	-	-
6 Month LIBID	0.10	0.10	0.10	0.10	0.10	0.10	0.10	-	-	-	-
12 Month LIBID	0.20	0.20	0.20	0.20	0.20	0.20	0.20	-	-	-	-
5yr PWLB Rate	1.90	1.90	2.00	2.00	2.00	2.00	2.00	2.10	2.10	2.10	2.10
10yr PWLB Rate	2.10	2.10	2.10	2.10	2.10	2.20	2.20	2.20	2.30	2.30	2.30
25yr PWLB Rate	2.50	2.50	2.50	2.50	2.60	2.60	2.60	2.70	2.70	2.70	2.70
50yr PWLB Rate	2.30	2.30	2.30	2.30	2.40	2.40	2.40	2.50	2.50	2.50	2.50

- The coronavirus outbreak has done huge economic damage to the UK and around the world. After the Bank of England took emergency action in March to cut Bank Rate to first 0.25%, and then to 0.10%, it left Bank Rate unchanged at its last meeting on 6<sup>th</sup> August, although some forecasters had suggested that a cut into negative territory could happen. However, the Governor of the Bank of England has made it clear that he currently thinks that such a move would do more damage than good and that more quantitative easing is the favoured tool if further action becomes necessary. As shown in the forecast table above, no increase in Bank Rate is expected within the forecast horizon ending on 31<sup>st</sup> March 2023 as economic recovery is expected to be only gradual and, therefore, prolonged.

**GILT YIELDS / PWLB RATES.** There was much speculation during the second half of 2019 that bond markets were in a bubble which was driving bond prices up and yields down to historically very low levels. The context for that was heightened expectations that the US could have been heading for a recession in 2020. In addition, there were growing expectations of a downturn in world economic growth, especially due to fears around the impact of the trade war between the US and China, together with inflation generally at low levels in most countries and expected to remain subdued. Combined, these conditions were conducive to very low bond yields. While inflation targeting by the major central banks has been successful over the last 30 years in lowering inflation expectations, the real equilibrium rate for central rates has fallen considerably due to the high level of borrowing by consumers. This means that central banks do not need to raise rates as much now to have a major impact on consumer spending, inflation, etc. The consequence of this has been the gradual lowering of the overall level of interest rates and bond yields in financial markets over the last 30 years. Over the year prior to the coronavirus crisis, this has seen many bond yields up to 10 years turn negative in the Eurozone. In addition, there has, at times, been an inversion of bond yields in the US whereby 10 year yields have fallen below shorter term yields. In the past, this has been a precursor of a recession. The other side of this coin is that bond prices are elevated as investors would be expected to be moving out of riskier assets i.e. shares, in anticipation of a downturn in corporate earnings and so selling out of equities.

Gilt yields had therefore already been on a generally falling trend up until the coronavirus crisis hit western economies during March. After gilt yields spiked up during the initial phases of the health crisis in March, we have seen these yields fall sharply to unprecedented lows as major western central banks took rapid action to deal with excessive stress in financial markets, and started massive quantitative easing purchases of government bonds: this also acted to put downward pressure on government bond yields at a time when there has been a huge and quick expansion of government

expenditure financed by issuing government bonds. Such unprecedented levels of issuance in “normal” times would have caused bond yields to rise sharply. At the close of the day on 30<sup>th</sup> September, all gilt yields from 1 to 6 years were in negative territory, while even 25-year yields were at only 0.76% and 50-year at 0.60%.

From the local authority borrowing perspective, HM Treasury imposed **two changes of margins over gilt yields for PWLB rates** in 2019-20 without any prior warning. The first took place on 9<sup>th</sup> October 2019, adding an additional 1% margin over gilts to all PWLB period rates. That increase was then at least partially reversed for some forms of borrowing on 11<sup>th</sup> March 2020, but not for mainstream General Fund capital schemes, at the same time as the Government announced in the Budget a programme of increased infrastructure expenditure. It also announced that there would be a consultation with local authorities on possibly further amending these margins; this was to end on 4<sup>th</sup> June, but that date was subsequently put back to 31<sup>st</sup> July. It is clear HM Treasury will no longer allow local authorities to borrow money from the PWLB to purchase commercial property if the aim is solely to generate an income stream (assets for yield).

Following the changes on 11<sup>th</sup> March 2020 in margins over gilt yields, the current situation is as follows: -

- **PWLB Standard Rate** is gilt plus 200 basis points (G+200bps)
- **PWLB Certainty Rate** is gilt plus 180 basis points (G+180bps)
- **PWLB HRA Standard Rate** is gilt plus 100 basis points (G+100bps)
- **PWLB HRA Certainty Rate** is gilt plus 80bps (G+80bps)
- **Local Infrastructure Rate** is gilt plus 60bps (G+60bps)

It is possible that the non-HRA Certainty Rate will be subject to revision downwards after the conclusion of the PWLB consultation; however, the timing of such a change is currently an unknown, although it would be likely to be within the current financial year.

As the interest forecast table for PWLB certainty rates, (gilts plus 180bps), above shows, there is likely to be little upward movement in PWLB rates over the next two years as it will take economies, including the UK, a prolonged period to recover all the momentum they have lost in the sharp recession caused during the coronavirus shut down period. Inflation is also likely to be very low during this period and could even turn negative in some major western economies during 2020/21.

### **The balance of risks to the UK**

- The overall balance of risks to economic growth in the UK is probably relatively even, but is subject to major uncertainty due to the virus. It may also be affected by what, if any, deal the UK agrees as part of Brexit.
- There is relatively little UK domestic risk of increases or decreases in Bank Rate and significant changes in shorter term PWLB rates. The Bank of England has effectively ruled out the use of negative interest rates in the near term and increases in Bank Rate are likely to be some years away given the underlying economic expectations. However, it is always possible that safe haven flows, due to unexpected domestic developments and those in other major economies, could impact gilt yields, (and so PWLB rates), in the UK.

**Downside risks to current forecasts for UK gilt yields and PWLB rates currently include:**



- **UK** - second nationwide wave of virus infections requiring a national lockdown
- **UK / EU trade negotiations** – if it were to cause significant economic disruption and a fresh major downturn in the rate of growth.
- **UK - Bank of England** takes action too quickly, or too far, over the next three years to raise Bank Rate and causes UK economic growth, and increases in inflation, to be weaker than we currently anticipate.
- A resurgence of the **Eurozone sovereign debt crisis**. The ECB has taken monetary policy action to support the bonds of EU states, with the positive impact most likely for “weaker” countries. In addition, the EU recently agreed a €750bn fiscal support package. These actions will help shield weaker economic regions for the next year or so. However, in the case of Italy, the cost of the virus crisis has added to its already huge debt mountain and its slow economic growth will leave it vulnerable to markets returning to taking the view that its level of debt is unsupportable. There remains a sharp divide between northern EU countries favouring low debt to GDP and annual balanced budgets and southern countries who want to see jointly issued Eurobonds to finance economic recovery. This divide could undermine the unity of the EU in time to come.
- Weak capitalisation of some **European banks**, which could be undermined further depending on extent of credit losses resultant of the pandemic.
- **German minority government & general election in 2021**. In the German general election of September 2017, Angela Merkel’s CDU party was left in a vulnerable minority position dependent on the fractious support of the SPD party, as a result of the rise in popularity of the anti-immigration AfD party. The CDU has done badly in subsequent state elections but the SPD has done particularly badly. Angela Merkel has stepped down from being the CDU party leader but she intends to remain as Chancellor until the general election in 2021. This then leaves a major question mark over who will be the major guiding hand and driver of EU unity when she steps down.
- **Other minority EU governments**. Austria, Sweden, Spain, Portugal, Netherlands, Ireland and Belgium also have vulnerable minority governments dependent on coalitions which could prove fragile.
- **Austria, the Czech Republic, Poland and Hungary** now form a strongly anti-immigration bloc within the EU. There has also been a rise in anti-immigration sentiment in Germany and France.
- **Geopolitical risks**, for example in China, Iran or North Korea, but also in Europe and other Middle Eastern countries, which could lead to increasing safe haven flows.
- **US – the Presidential election in 2020**: this could have repercussions for the US economy and SINO-US trade relations.

#### **Upside risks to current forecasts for UK gilt yields and PWLB rates**

- **UK** - stronger than currently expected recovery in UK economy.
- **Post-Brexit** – if an agreement was reached that removed the majority of threats of economic disruption between the EU and the UK.

- The **Bank of England is too slow** in its pace and strength of increases in Bank Rate and, therefore, allows inflationary pressures to build up too strongly within the UK economy, which then necessitates a later rapid series of increases in Bank Rate faster than we currently expect.

## 2.3 Treasury Management Strategy Statement and Annual Investment Strategy Update

The Treasury Management Strategy Statement, (TMSS), for 2020/21 was approved by this Council on 25<sup>th</sup> June 2020 (Governance and Audit). There are no policy changes to the TMSS; the details in this report update the position in the light of the updated economic position and budgetary changes already approved.

## 2.4 The Council's Capital Position (Prudential Indicators)

This part of the report is structured to update:

- The Council's capital expenditure plans;
- How these plans are being financed;
- The impact of the changes in the capital expenditure plans on the prudential indicators and the underlying need to borrow; and
- Compliance with the limits in place for borrowing activity.

### 2.4.1 Prudential Indicator for Capital Expenditure

This table shows the revised estimates for capital expenditure and the changes since the capital programme was agreed at the Budget. Councillor and Officer Challenge sessions on the capital budget took place for Quarter1 and the revised estimate is based on increased scrutiny of the schemes within the capital programme.

Capital Expenditure by Service	2020/21 Original Estimate £m	2020/21 Revised Estimate £m	Current Position 30 Sept 20 £m
<b>Total capital expenditure</b>	209.1	133.5	27.3

### 2.4.2 Changes to the Financing of the Capital Programme

The table below draws together the main strategy elements of the capital expenditure plans (above), highlighting the original supported and unsupported elements of the capital programme, and the expected financing arrangements of this capital expenditure. The borrowing element of the table increases the underlying indebtedness of the Council by way of the Capital Financing Requirement (CFR), although this will be reduced in part by revenue charges for the repayment of debt (the Minimum Revenue Provision). This direct borrowing need may also be supplemented by maturing debt and other treasury requirements.

<b>Capital Expenditure</b>	<b>2020/21 Original Estimate £m</b>	<b>2020/21 Revised Q2 Estimate £m</b>
<b>Total capital expenditure</b>	<b>209.1</b>	<b>133.5</b>
<b>Financed by:</b>		
<b>Capital receipts</b>	3.2	2.5
<b>Capital grants</b>	108.5	66.8
<b>Capital reserves</b>	0.6	1.1
<b>Revenue</b>	1.0	0.6
<b>Total financing</b>	113.3	71.0
<b>Borrowing requirement</b>	<b>95.8</b>	<b>62.5</b>

Projected changes to the Capital Programme have resulted in a reduced new borrowing requirement of £62.5m.

### **2.4.3 Changes to the Prudential Indicators for the Capital Financing Requirement (CFR), External Debt and the Operational Boundary**

The table over shows the CFR, which is the underlying external need to incur borrowing for a capital purpose. The CFR is the total historic outstanding capital expenditure which has not yet been paid for from either revenue or capital resources. It is essentially a measure of the Council's indebtedness and so the underlying borrowing need. Any capital expenditure above, which has not immediately been paid for, will increase the CFR. The reduced borrowing requirement has reduced the CFR estimate.

The table over also shows the expected debt position over the period, which is termed the Operational Boundary. This is the limit beyond which external debt is not normally expected to exceed.

	<b>2020/21 Original Estimate £m</b>	<b>2020/21 Revised Estimate £m</b>
CFR – non housing	767	714
CFR – housing	35	35
<b>Total CFR</b>	<b>802</b>	<b>749</b>
<b>Net movement in CFR</b>		<b>-53</b>
<b>Prudential Indicator – the Operational Boundary for external debt</b>		
Borrowing	540	540
Other long term liabilities*	180	180
<b>Total debt (year-end position)</b>	<b>720</b>	<b>720</b>

\* On balance sheet PFI schemes and finance leases etc.

## 2.4.4 Limits to Borrowing Activity

The first key control over the treasury activity is a prudential indicator to ensure that over the medium term, net borrowing (borrowings less investments) will only be for a capital purpose\*. Gross external borrowing should not, except in the short term, exceed the total of CFR in the preceding year plus the estimates of any additional CFR for 2020/21 and next two financial years. This allows some flexibility for limited early borrowing for future years. The Council has approved a policy for borrowing in advance of need which will be adhered to if this proves prudent.

	<b>2020/21 Original Estimate £m</b>	<b>Current Position 30 Sept 20 £m</b>	<b>2020/21 Revised Estimate £m</b>
Borrowing	383	346	340
Other long term liabilities	169	159	159
<b>Total debt</b>	<b>552</b>	<b>505</b>	<b>499</b>
<b>CFR* (year-end position)</b>	<b>802</b>		<b>749</b>

The Director of Finance reports that no difficulties are envisaged for the current or future years in complying with this prudential indicator.

A further prudential indicator controls the overall level of borrowing. This is the Authorised Limit which represents the limit beyond which borrowing is prohibited, and needs to be set and revised by Members. It reflects the level of borrowing which, while not desired, could be afforded in the short term, but is not sustainable in the longer term. It is the expected maximum borrowing need with some headroom for unexpected movements. This is the statutory limit determined under section 3 (1) of the Local Government Act 2003.

<b>Authorised limit for external debt</b>	<b>2020/21 Original Indicator</b>	<b>2020/21 Revised Indicator</b>
Borrowing	550	550
Other long term liabilities	180	180
<b>Total</b>	<b>730</b>	<b>730</b>

### New Loans

A projection of new loans is shown in the Table below. This projection shows that the capital spend funded from borrowing generates a need to take out new loans – after adjusting for the refinancing of past borrowing and other balance sheet changes.

	<b>2020/21 Original Estimate £m</b>	<b>2020/21 Revised Estimate £m</b>
Borrowing requirement for capital budget	95.8	62.5
Maturing loans	2	2

Investments / working capital changes	-43	-43
MRP (excluding PFI)	-21	-20
<b>External Loan Requirement</b>	<b>33.8</b>	<b>1.5</b>

### 2.4.5 Borrowing

The Council's capital financing requirement (CFR) for 2020/21 is expected to be below the original forecast of £802m; due to changes in the profiling of capital spend. The CFR denotes the Council's underlying need to borrow for capital purposes. If the CFR is positive the Council may borrow from the PWLB or the market (external borrowing) or from internal balances on a temporary basis (internal borrowing). The balance of external and internal borrowing is generally driven by market conditions. The Council has long term borrowings of £495m and has utilised cash flow funds in lieu of borrowing. This is a prudent and cost-effective approach in the current economic climate but will require ongoing monitoring in the event that any upside risk to gilt yields prevails.

Due to the increase in PWLB margins over gilt yields in October 2019, and the subsequent consultation on these margins by HM Treasury - which ended on 31<sup>st</sup> July 2020 - the Council has refrained from undertaking new long-term PWLB borrowing for the present and has met its requirements for additional borrowing by using short-term borrowing until such time as new PWLB margins are finally determined. In addition, the effect of coronavirus on the capital programme objectives are being assessed. Therefore, our borrowing strategy will be reviewed and then revised in order to achieve optimum value and risk exposure in the long-term.

£1.8m of loans have matured in July 2020 with an average rate of interest of 9.9%. To date no new borrowing has been undertaken this year.

#### **PWLB maturity certainty rates (gilts plus 180bps) year to date to 30<sup>th</sup> September 2020**

PWLB rates varied within a relatively narrow range between April and July but the longer end of the curve rose during August. This increase came in two periods; the first in the second week of the month was on the back of hopes for fresh US stimulus. This saw investors switch monies out of government bonds and into equities. The second shift higher at the longer end of the curve came in the latter stages of the month as investors reacted to the announcement of the tweak to the Fed's inflation target. Despite moves further out in the yield curve, the short end remained anchored on the basis of no fundamental change to the interest rate outlook.

The 50-year PWLB target rate for new long-term borrowing was unchanged at 2.30%.

### 2.4.6 Debt Rescheduling

Debt rescheduling opportunities have been very limited in the current economic climate given the consequent structure of interest rates, and following the increase in the margin added to gilt yields which has impacted PWLB new borrowing rates since October 2010. No debt rescheduling has therefore been undertaken to date in the current financial year.

## 2.5 Investment Portfolio 2020/21

In accordance with the Code, it is the Council's priority to ensure security of capital and liquidity, and to obtain an appropriate level of return which is consistent with the Council's risk appetite. As shown by the forecasts in section 3.2, it is now impossible to earn the level of interest rates commonly seen in previous decades as all investment rates up to 12 months are either negative or barely above zero now that Bank Rate is at 0.10%. Given this risk environment and the fact that increases in Bank Rate are unlikely to occur before the end of the current forecast horizon of 31<sup>st</sup> March 2023, investment returns are expected to remain low.

The Council held £69.7m of investments as at 30th September 2020 (£95.2m at 31 March 2020) and the investment portfolio yield for the first 6 months of the year is 0.22%.

The Director of Finance confirms that the approved limits within the Annual Investment Strategy were not breached during the first 6 months of 2020/21.

The Council's budgeted investment return for the year to date is expected to be below budget.

### **Negative investment rates**

While the Bank of England has said that it is unlikely to introduce a negative Bank Rate, at least in the next 6 -12 months, some deposit accounts are already offering negative rates for shorter periods. As part of the response to the pandemic and lockdown, the Bank and the Government have provided financial markets and businesses with plentiful access to credit, either directly or through commercial banks. In addition, the Government has provided large sums of grants to local authorities to help deal with the Covid crisis; this has caused some local authorities to have sudden large increases in investment balances searching for an investment home, some of which was only very short term until those sums were able to be passed on.

As for money market funds (MMFs), yields have continued to drift lower (rates being between 0.01% and 0.04% at present). Some managers have suggested that they might resort to trimming fee levels to ensure that net yields for investors remain in positive territory where possible and practical. Investor cash flow uncertainty, and the need to maintain liquidity in these unprecedented times, has meant there is a glut of money swilling around at the very short end of the market. This has seen a number of market operators, now including the DMADF, offer nil or negative rates for very short term maturities..

Inter-local authority lending and borrowing rates have also declined due to the surge in the levels of cash seeking a short-term home at a time when many local authorities are probably having difficulties over accurately forecasting when disbursements of funds received will occur or when further large receipts will be received from the Government.

### **Creditworthiness.**

Although the credit rating agencies changed their outlook on many UK banks from stable to negative outlook during the quarter ended 30<sup>th</sup> June 2020 due to upcoming risks to banks' earnings and asset quality during the economic downturn caused by the pandemic, the majority of ratings were affirmed due to the continuing strong credit profiles of UK banks. However, during Q1 and Q2 2020, banks made provisions for *expected* credit

losses and the rating changes reflected these provisions. As we move into the next quarters ahead, more information will emerge on *actual* levels of credit losses. (Quarterly performance is normally announced in the second half of the month following the end of the quarter.) This has the potential to cause rating agencies to revisit their initial rating adjustments earlier in the current year. These adjustments could be negative or positive, although it should also be borne in mind that UK banks went into this pandemic with strong balance sheets. Indeed, the Financial Policy Committee (FPC) report on 6<sup>th</sup> August revised down their expected credit losses for the banking sector to “somewhat less than £80bn”. They stated that in their assessment, “banks have buffers of capital more than sufficient to absorb the losses that are likely to arise under the MPC’s central projection”. The FPC stated that for real stress in the sector, the economic output would need to be twice as bad as the MPC’s projection, with unemployment rising to above 15%.

All three rating agencies have reviewed banks around the world with similar results in many countries of most banks being placed on negative watch, but with a small number of actual downgrades.

### **Investment Counterparty criteria**

The current investment counterparty criteria selection approved in the TMSS is meeting the requirement of the treasury management function.

## **2.6 Other areas for consideration**

2.6.1 None

## **3. Other considerations**

3.1 None

## **4. Financial and Resources Appraisal**

4.1 The financial implications are set out in section 2 of this report

## **5. Risk Management and Governance Issues**

5.1 The principal risks associated with treasury management are:

Risk: Loss of investments as a result of failure of counterparties.

Mitigation: Limiting the types of investment instruments used, setting lending criteria for counterparties, and limiting the extent of exposure to individual counterparties.

Risk: That the Council will commit too much of its investments in fixed term investments and might have to recall investments prematurely resulting in possible additional costs or new borrowing (Liquidity risk).

Mitigation: Ensuring that a minimum proportion of investments are held in short term investments for cash flow purposes.

Risk: Increase in the net financing costs of the Council due to borrowing at high rates of interest.

Mitigation: Planning and undertaking borrowing and lending in light of assessments of future interest rate movements, and by undertaking mostly long term borrowing at fixed rates of interest (to reduce the volatility of capital financing costs).

Risk: Higher interest rates increase borrowing making it more difficult to self-finance capital schemes. Debt servicing becomes less affordable and less sustainable and crowds out revenue spend.

Mitigation: To pause, delay or defer capital schemes. Also review opportunities to borrow in the future at current interest rates.

Risk: Return on non-treasury investments lower than expected.

Mitigation: Review and analysis of risk prior to undertaking non-treasury investments.

Risk: Coronavirus. The level of uncertainty in the future path of economic growth, unemployment, fiscal and monetary policy make it very difficult to accurately assess the impact on investments, capital spend and borrowing for the Council. The scale of impact will depend on the length of any lockdown and the depth of any recessionary impact.

Mitigation: Cash investments will be mainly held short term due to the uncertainties caused by the virus and we will continue to monitoring the situation and report any changes in the next Treasury report.

Risk: The Council's Minimum Revenue Policy charges an insufficient amount to the Revenue Estimates to repay debt.

Mitigation: Align the Minimum Revenue Policy to the service benefit derived from the Council's assets.

Risk: Associated with cash management, legal requirements and fraud.

Mitigation: These risks are managed through:

- Treasury Management Practices covering all aspects of Treasury management procedures including cash flow forecasting, documentation, monitoring, reporting and division of duties.
- All Treasury management procedures and transactions are subject to inspection by internal and external auditors. The council also employs external financial advisors to provide information on market trends, credit rating alerts, lending criteria advice and investment opportunities.

The Council also employs external financial advisors to provide information on market trends, credit rating alerts, lending criteria advice and investment opportunities.

Risk: Anticipated borrowing is lower than expected because the 2020/21 capital programme is underspent. This is explained in more detail below, together with the actions being taken to reduce these risks:

Mitigation: The Council is required to set a balanced budget for its revenue estimates; so in broad terms, income received will match expenditure over the 2020/21 financial year. The 2020/21 revenue estimates cause only temporary cash flow differences, for example when income is received in a different month to when the expenditure is incurred.

However, the 2020/21 capital budget will cause a cash flow shortfall in the long term, which generates a borrowing requirement. While some of the capital budget is funded immediately, mainly with Government grants, other elements are not funded initially, leading to the cash flow deficit that requires borrowing.



Managing borrowing is part of the Treasury Management role. To help in its management, the Treasury Strategy identifies the element within the capital budget that is not funded straightaway, to anticipate the Council's borrowing requirement.

However, when the capital budget is underspent, the Council has a lower borrowing requirement than anticipated. This risk is managed in practice because the Council only borrows when there is an actual cash flow shortage.

However, the uncertainty around spend against the capital budget makes cash flow management more difficult. For example, it is less likely that the Council would take advantage of a short-term fall in interest rates, without more certainty around the timing of any borrowing need. Actions that have taken place to manage the risks relating to this uncertainty in the timing of capital spend are: Councillor and Officer challenge sessions on the capital budget; increased scrutiny of the capital forecasts in the quarterly monitoring, and the collection of additional documentation around the critical paths of individual schemes.

## **6. Legal Appraisal**

6.1 Any relevant legal considerations are set out in the report

## **7. Other Implications**

7.1 Equality & Diversity – no direct implications

7.2 Sustainability implications – no direct implications

7.3 Green house Gas Emissions Impact – no direct implications

7.4 Community safety implications – no direct implications

7.5 Human Rights Act – no direct implications

7.6 Trade Unions – no direct implications

7.7 Ward Implications – no direct implications

7.8 Implication for Corporate Parenting – no direct implications

7.9 Issues arising from Privacy Impact Assessment– no direct implications

## **8. Not for publications documents**

8.1 None

## **9. Options**

9.1 None

## **10. Recommendations**

10.1 That the report be noted by the Governance and Audit Committee and passed to full Council on the 8 December 2020 for adoption.

## **11. Appendices**

**12. Background Documents**

Treasury Management Schedules

Treasury Management Practices

Treasury Policy

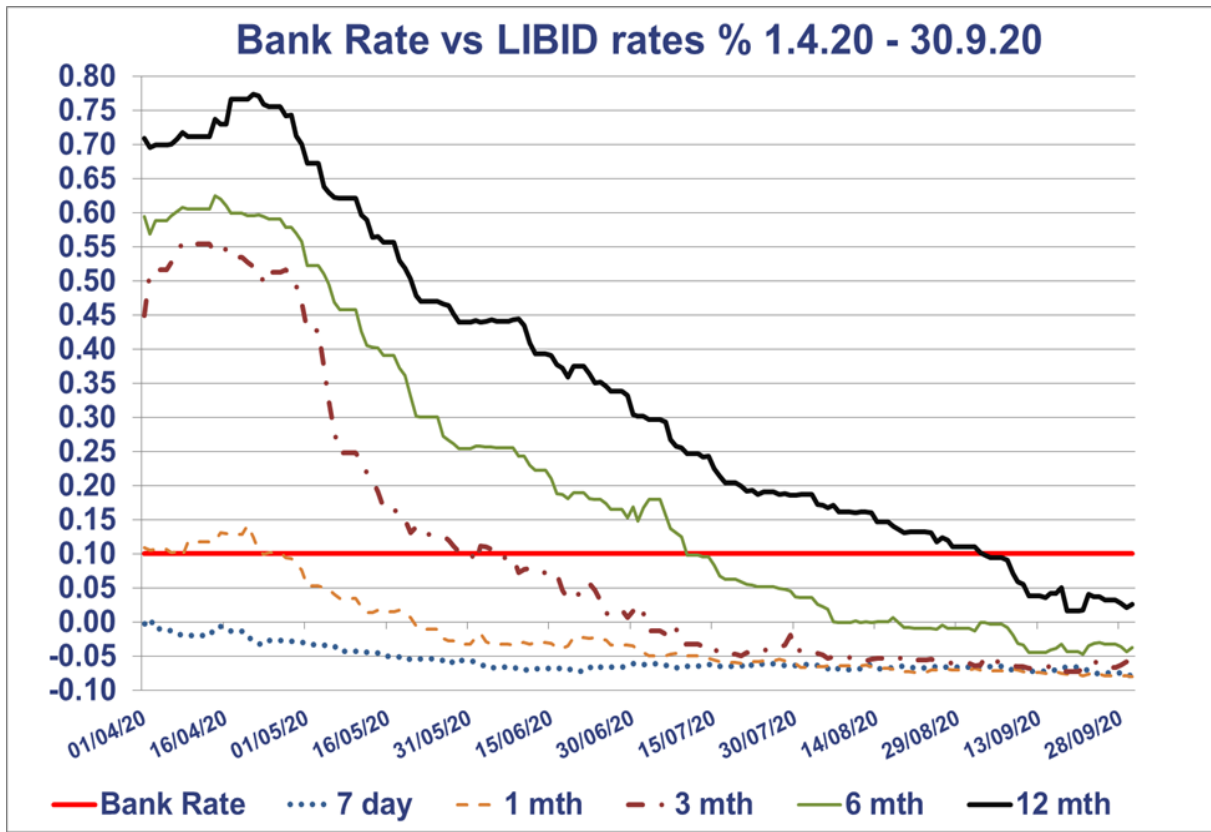
## APPENDIX 1: Prudential and Treasury Indicators as at 30<sup>th</sup> September 2020

<b>Treasury Indicators</b>	<b>2020/21 Budget £m</b>	<b>(Apr - Sept) Actual £m</b>
Authorised limit for external debt	£730m	£730m
Operational boundary for external debt	£720m	£720m
Gross external debt	£552m	£495m
Upper limit for principal sums invested over 365 days	£20m	£0m

<b>Maturity structure of fixed rate borrowing -</b>	<b>Upper Limit</b>	<b>(Apr-Sept) Actual</b>
Under 12 months	20%	0%
12 months to 2 years	20%	2%
2 years to 5 years	50%	9%
5 years to 10 years	75%	18%
10 years and above	90%	71%

<b>Prudential Indicators</b>	<b>2020/21 Budget £m</b>	<b>2020/21 Revised Estimate £m</b>
Capital expenditure (Revised Budget)	£133.5m	£88.4m
Capital Financing Requirement (CFR)	£802m	£749m
Ratio of financing costs to net revenue stream	15.4%	15.2%

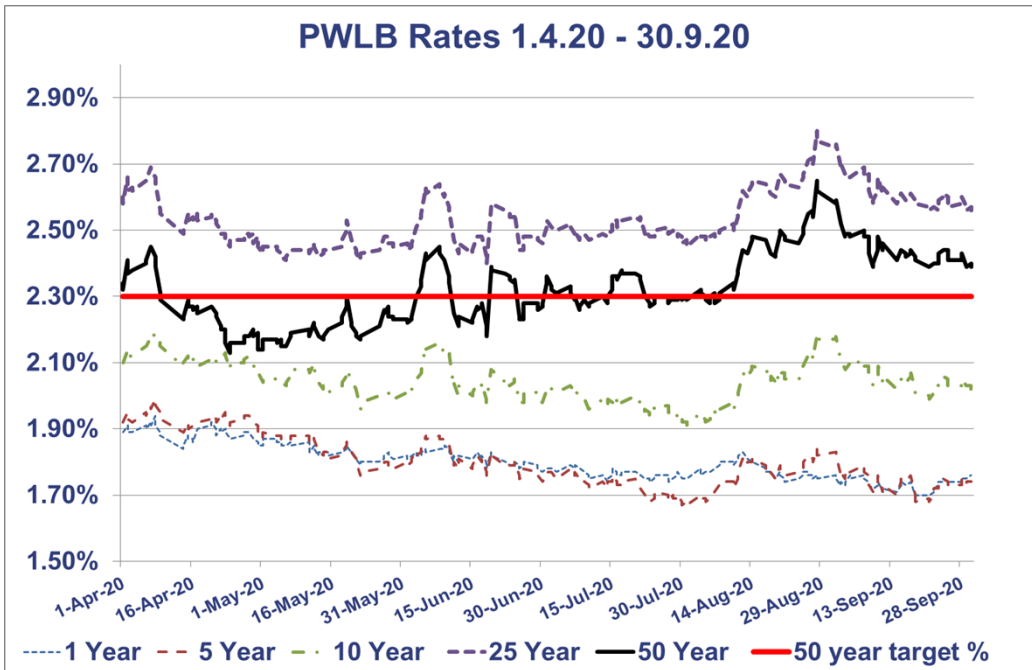
## APPENDIX 2: Investment rates



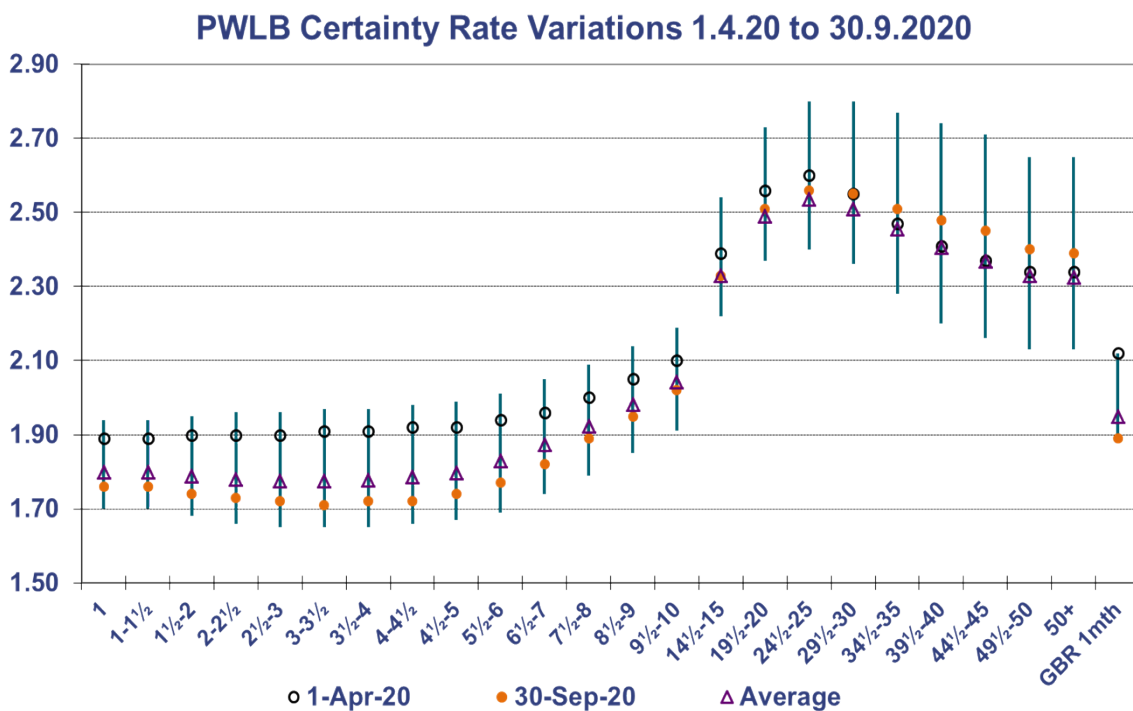
	Bank Rate	7 day	1 mth	3 mth	6 mth	12 mth
High	0.10	0.00	0.14	0.56	0.62	0.77
High Date	01/04/2020	02/04/2020	20/04/2020	08/04/2020	14/04/2020	21/04/2020
Low	0.10	-0.07	-0.07	-0.06	-0.01	0.11
Low Date	01/04/2020	19/06/2020	21/08/2020	28/08/2020	25/08/2020	28/08/2020
Average	0.10	-0.05	-0.01	0.14	0.25	0.41
Spread	0.00	0.08	0.22	0.62	0.63	0.66

## APPENDIX 3: Borrowing rates

The following graph and tables are optional for clients to use if they wish.



	1 Year	5 Year	10 Year	25 Year	50 Year
Low	1.70%	1.67%	1.91%	2.40%	2.13%
Date	18/09/2020	30/07/2020	31/07/2020	18/06/2020	24/04/2020
High	1.94%	1.99%	2.19%	2.80%	2.65%
Date	08/04/2020	08/04/2020	08/04/2020	28/08/2020	28/08/2020
Average	1.80%	1.80%	2.04%	2.54%	2.33%



## APPENDIX 4: Approved countries for investments as at 30<sup>th</sup> September 2020

*Based on lowest available rating*

### AAA

- Australia
- Denmark
- Germany
- Luxembourg
- Netherlands
- Norway
- Singapore
- Sweden
- Switzerland

### AA+

- Canada
- Finland
- U.S.A.

### AA

- Abu Dhabi (UAE)
- France

### AA-

- Belgium
- Hong Kong
- Qatar
- **U.K.**