



Appendix 3 &4

Mental Health Partnership

Children and young people

Governance and roles

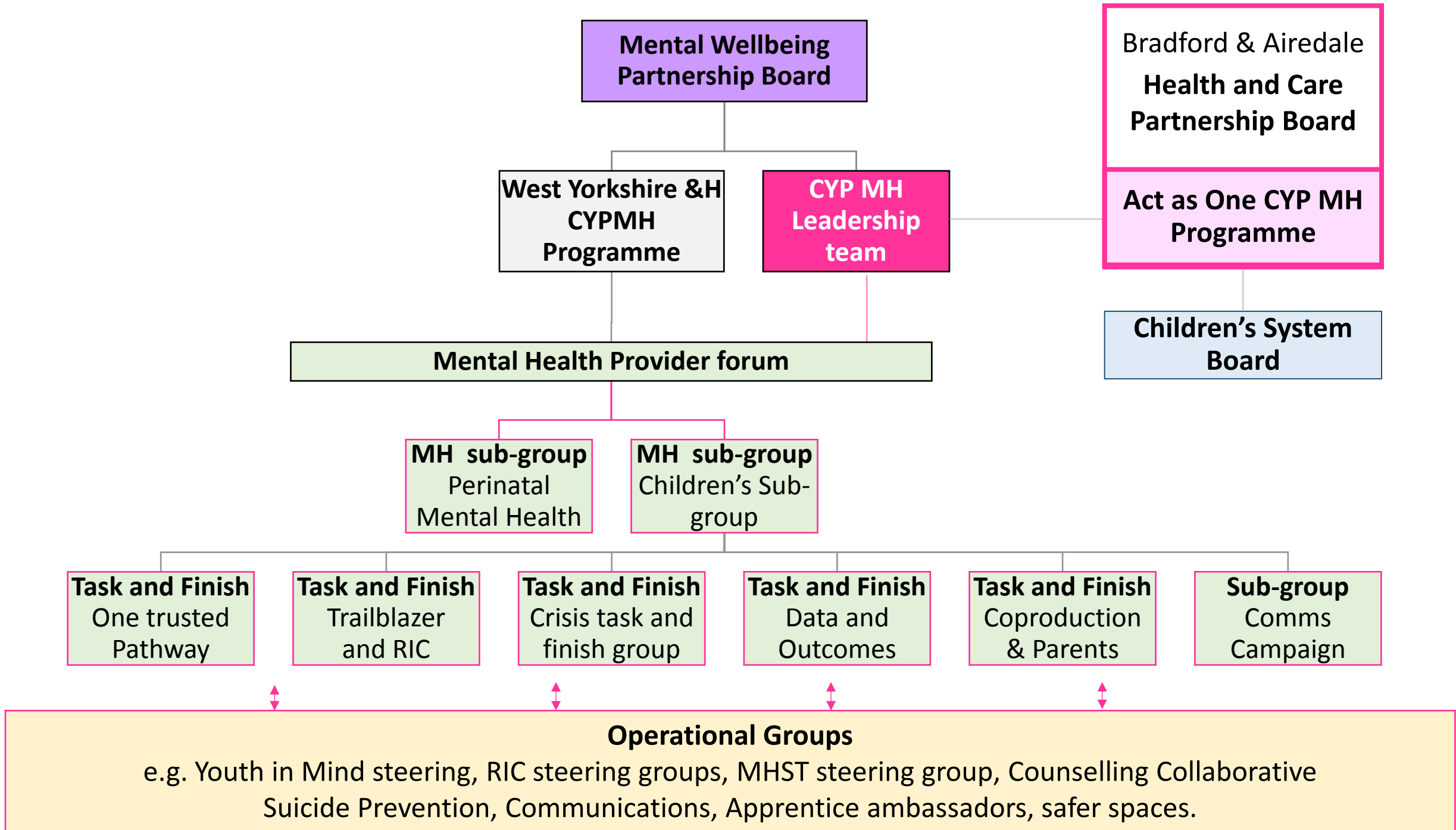


Programme Charter: C&YP Mental Health Programme

Our vision: <i>Brighter futures for children and young people to thrive and achieve their potential.</i>		Overall aim: To work as a whole system to promote, protect and improve children and young people’s mental wellbeing to enable them to thrive and lead full, happy and healthy lives.							
Context: Mental health problems often develop early. According to the NHS Long Term Plan, between the ages of 5–15 one in every nine children has a mental disorder. Half of all mental health problems are established by the age of 14 and three quarters established by 24 years of age.		Promoting resilience, prevention and early intervention We will work together with schools, communities and universal services to promote good mental wellbeing, building knowledge and skills around emotional resilience and self-care. We will take early action to prevent mental health problems from developing and support children and young people as soon as any problems arise.							
Bradford’s district’s population is a young one, with the fourth highest proportion of under 16 year olds in England, with a number of local risk factors that increase the likelihood of poor mental health. In addition, the overall child population is set to increase by a further 5.5% by 2025. The 10-14 age group, a key age group for the onset of mental health difficulties, is projected to grow by 10.2% in the next 10 years.		Improving access to effective support: a system without tiers Children, young people, parents and carers will be able to access a range of mental health support via a new, easy to navigate, single multi-disciplinary pathway. We will ensure children and young people have access to the right support at the right time, and they have choice and control over how, where and when that support is provided. We will reduce waiting times for services and offer alternative provision for those who are waiting to prevent the escalation of needs wherever possible.							
Problem statement: Children, young people and families in Bradford and Craven find it difficult to get help at an early stage if they are experiencing mental health issues. Accessing help when children and young people are experiencing mental distress is also reported to be difficult.		We will have a robust, multi-disciplinary crisis response offer for those who need it and a coordinated care and support response for children, young people and families following a crisis.							
Children, young people, families and professionals have told us that there is insufficient early intervention and prevention approaches for children and young people locally, and a lack of consistent school based support, which often leads to our specialist services and crisis support being the default offer. Additionally, children and young people often face delays and long waiting times to access the support they need.		Care for children in vulnerable situations There will be a clear joined up approach for those children, young people and families who need further support, may have a greater risk of developing mental health problems or may find it more difficult to access help. We will ensure services provided are evidence based and coordinated, so people do not fall between gaps in provision.							
In Scope		Out of Scope							
<ul style="list-style-type: none"> ▪ Early mental health intervention ▪ Social care, education and health ▪ Children in vulnerable situations ▪ Specialist mental health ▪ Crisis support including A&E/Hospital ▪ Age 0-25 ▪ Perinatal Mental Health 		<ul style="list-style-type: none"> ▪ Autism assessment ▪ Tier 4 level CYPMH 							
Quality Impact		Measurements							
For CYP and families: Open access, flexible support without barriers Choice of approaches and promote control We are outcomes focussed based on CYP self-defined needs Our services and support provide hope, encouragement and good health For staff We support our workforce to feel confident, skilled and empowered to deliver high quality evidence based care that is safe, flexible and responsive to needs.		<table border="1" style="width: 100%; border-collapse: collapse;"> <thead> <tr> <th style="background-color: #4a4a8a; color: white;">Description of Measure</th> <th style="background-color: #4a4a8a; color: white;">Baseline</th> <th style="background-color: #4a4a8a; color: white;">Target by:</th> </tr> </thead> <tbody> <tr> <td style="background-color: #e0e0e0;"> School readiness (attendance, attainment) Exclusions, detention/isolation/restriction/NEET/YOT/EHCPs School survey, resilience, physical activity Children living in poverty, care leavers, children in care, placement stability. BAME CAMHS referral, access and waiting Self-harm presentations and admissions , A&E conveyance Prescribing/SMI/ED, Hate crime index, domestic abuse Crisis services – safer spaces, First Response, s136 Community / parental engagement </td> <td style="background-color: #e0e0e0;"> System wide baseline measures to be established across CCG, LA, Social Care, Public Health, BDCFT </td> <td style="background-color: #e0e0e0;"> To be scoped and target date to be confirmed </td> </tr> </tbody> </table>		Description of Measure	Baseline	Target by:	School readiness (attendance, attainment) Exclusions, detention/isolation/restriction/NEET/YOT/EHCPs School survey, resilience, physical activity Children living in poverty, care leavers, children in care, placement stability. BAME CAMHS referral, access and waiting Self-harm presentations and admissions , A&E conveyance Prescribing/SMI/ED, Hate crime index, domestic abuse Crisis services – safer spaces, First Response, s136 Community / parental engagement	System wide baseline measures to be established across CCG, LA, Social Care, Public Health, BDCFT	To be scoped and target date to be confirmed
Description of Measure	Baseline	Target by:							
School readiness (attendance, attainment) Exclusions, detention/isolation/restriction/NEET/YOT/EHCPs School survey, resilience, physical activity Children living in poverty, care leavers, children in care, placement stability. BAME CAMHS referral, access and waiting Self-harm presentations and admissions , A&E conveyance Prescribing/SMI/ED, Hate crime index, domestic abuse Crisis services – safer spaces, First Response, s136 Community / parental engagement	System wide baseline measures to be established across CCG, LA, Social Care, Public Health, BDCFT	To be scoped and target date to be confirmed							

Mental Health Governance

Governance level	Role	Membership type	SRO / Lead	Members	
Partnership Board	<ul style="list-style-type: none"> Setting strategic direction Understanding need Accountability and risk Decision making and resource allocation 	Director and exec level, SRO	Helen Hirst (WY) Therese Patten (Place) Admin: Sheron Jarret Board support: Ash Alom/Gordon Todd	BDCFT – CEO/COO BDCFT – SRO - CYP, WY ICS / CCG (Director/AD) BTHFT AD LA – AD PH – Consultant GP / Primary care CP/PC VCS Mental health provider chair Apprentice/Lived experience	Therese Patten / Patrick Scott David Sims Helen Hirst / Ali Jan, tba Sarah Turner Irfan Alam, Jane Wood Duncan Cooper Angela Moulson Helen Davey tba
Leadership team	<ul style="list-style-type: none"> Programme management and support Transformation programmes (CYP, Crisis, Community) Assurance Reporting 	Clinical, senior and associate director/managerial leads	David Sims (CYP) Admin (Catherine Smith/officers)	CYP leadership team David Sims, Irfan Alam, Helen Ioannou, Ali Jan Haider, Sasha Bhat, Mark Hindmarsh, Joanne Tooby, Duncan Cooper, Kay Rushworth Krystal Hemingway, (KH), Apprentices x 3, Dawn Lee Sub-group chaired by KH	All age leadership team Angela Moulson, Kelly Barker, Nadia Khan, Duncan Cooper, David Armitage, Helen Davey, VCS+ vacancy x2, Ishtiaq Ahmed, Gordon Todd, Lucy Clews, Kris Farnell, Louise Atherton
Provider Forum	<ul style="list-style-type: none"> Operational steer Information sharing, insight and intelligence Co-production 	Provider and programme management	Kelly Barker (BDCFT) Helen Davey (VCS) Nadia Khan (Care) Richard Fawcett (CYP)	Co-chaired by Kelly Barker and Helen Davey All provider members Counselling Collab, BAME Collab, OPMH and Perinatal MH group	
Operational delivery	<ul style="list-style-type: none"> Operational delivery Task and finish 	Delivery and programme lead	Provider led Admin (Providers)	BDCFT and providers	



Covid19

Outbreak Control Board

Public Service Executive

Health & Care Silver

Bronze work streams

* Includes mental wellbeing partnership and community partnerships



Wellbeing Board

Executive Board

Health & Care Partnerships *

System Enabling Strategies

System Committees

ICP Development

System Programmes

- Ageing Well
- Heart Disease
- Respiratory
- Diabetes
- Access to Care
- CYP MH
- Better Births

- Workforce
- Digital
- Estates
- Population Health
- Communications
- Engaging People
- Living Well
- Prevention & Early Help

- Finance & Performance
- Quality
- Clinical Forum
- Strategy

- Leadership
- Governance & Decision making
- Resourcing and supporting our partnership

In the context of wider partnerships

Wellbeing Board

Infrastructure Support

Public Service Executive Group

Strategic Partnerships

Childrens System Board

Cultural Place Partnership

Economic Partnership

Health & Care Executive Board

Safer Communities Partnership

Stronger Communities Partnership

Sustainable Development Partnership

Scientific Advisory Group

Shared Comms and Engagement

community voice and influence

Equalities

partnership secretariat/ support

Social, economic, and environmental wellbeing of the population

- Themes across all partnerships**
- Reducing inequalities
 - Prevention & Early Help
 - Asset based community development approach