

# Toller Ward Plan 2019 - 2022



# Introduction

---

Welcome to the Toller Ward Action Plan

This Plan sets out the rationale for community planning arrangements in the Toller Ward with in the Bradford West Constituency Area.

The plan will help to achieve better outcomes for our communities by addressing local priorities. It focuses on people' s needs and promotes our work to reduce People and Place based issues.

This plan is an agreement between the communities of the Toller ward and local service providers that sets out how we work together to target our resources in the most effective way and highlights how we will review and report on progress, allowing us to realign priorities as needed.

The community is at the heart of this plan, and through 2018/19 we have worked hard to ensure more effective partnership working, so we involve communities in a greater

range of participation.

We want to improve how we deliver community plans, more effective community engagement, and greater community participation.

The plan brings communities closer together with local service providers to plan and deliver better services which meet the needs of the people who use them.

## Partners in the Toller ward Include:

- Health Partnership (Community 4)
- JUMP: Local delivery partnership
- Neighbourhood Policing Team
- Registered Social Landlords
- Community and voluntary groups i.e Girlington community centre
- Well Bradford

**Toller Ward Plan 2019 - 2022**



# Context

---

## The Ward Plan and Assessment Process

Community planning is the process by which councils and other public bodies work with local people, businesses and voluntary groups. By doing so, partners aim to plan and deliver better services, improving the lives of people who live in the local community.

The Ward Assessment and plan is designed to inform ward working. It summarises the strengths and issues within the Toller Ward. This evidence comes from a number of sources including information gained from consultations through our partners; hands on support and direction from Elected Ward Councillors in their role as community champions and regular contact with members of the local community.

The Council Ward Officers play a critical role in summarising this information into findings. The most important issues are presented in the ward plan. Ward plans are approved

annually by elected members at the Area Committee, regular updates are also provided.

## Co-ordination of Services

The ward plans provides an opportunity to coordinate services this ensures that problem solving is effective and efficient utilising local networks to identify concerns and opportunities early to provide efficiency saving and improved local outcomes for the community. Central to an effective ward plan is the coordination by ward officers of public sector services.

Ward officers actively support local networks and partnership involving the public, private and third sector as well as the community to build on local assets, improve community cohesion and activity.



# Neighbourhoods

## Neighbourhoods:

Girlington

Lilycroft

Daisy Hill

Scotchman Road

Duckworth Lane

## Community Assets Include:

West Park

Allotments (Scotchman Road/Whetley Lane)

Girlington Community Centre,

Little Lane church,

Toller Youth Cafe

Manningham Mills Sports and Community Centre,

Gt Horton Church Cricket Club



## Toller Ward Plan 2019 - 2022



# Engaging Communities

---

This ward plan is based on several community conversations throughout the year at neighbourhood and ward forums, community events, and partnerships.

The process does not revolve around what agencies can do alone but what communities, VCS partners and public sector agencies can collectively achieve if they work closely together.

The ward plan process aims to draw the community into solutions and broker a relationship of civic responsibility.

The key is to establish a partnership process that will not be overly demanding on resources, whilst at the same time maximising the important contributions that communities, voluntary organisations and public bodies can make to delivering better outcomes for all.

## Our Approach

### Asset Based Community Development

Asset-based community development, put very simply, is a bottom up approach to working with communities that starts from a place that celebrates the strengths and assets communities have to draw from rather than starting from a point of focusing on what is wrong in communities and needs fixing.

By starting from what is what is strong rather than what is wrong, asset-based community development offers an opportunity to build on the skills of local residents and ensures the power of local associations is recognised.



# Bradford West Team and Toller Councillors

Bradford West covers a diverse area from Bradford city centre to beyond Thornton and to the Calderdale boundary. We take in urban, suburban and rural, residential and industrial and include well known locations such as Bradford Royal Infirmary, St Luke's Hospital, Chellow Dene, Listers Mill, Bradford University and College, Cannon Mills and Heaton Woods. Our mix of communities includes single pensioner households, large families with young children, and people from many different religious and cultural backgrounds.

## Bradford West includes the electoral wards of :

- Thornton & Allerton - Sandy Lane, Allerton, Thornton
- City - Horton Grange, Bradford City Centre
- Clayton & Fairweather Green - Clayton, Fairweather Green
- Toller - Daisy Hill, Girlington, Lilycroft
- Heaton - Frizinghall, Upper Heaton, Heaton
- Manningham - Manningham



Cllr Arshad Hussain



Cllr Kamran Hussain



Cllr FoZIA Shaheen

| Officer           | Role                                       | Wards covered                                |
|-------------------|--|--|
| Noreen Akhtar     | Area Co-ordinator                          | All  |
| Masood Gondal     | Ward Officer                               | Thornton & Allerton and Toller               |
| Jo Beecroft       | Ward Officer                               | Clayton & Fairweather Green And Lower Grange |
| Arshad Mahmood    | Ward Officer                               | City and Heaton                              |
| Kate Lightstead   | Ward Officer                               | Manningham                                   |
| Simon Drake       | Parks and Street Cleansing manager         | All  |
| Richard Westerman | Warden & Environmental Enforcement Manager | All  |
| Nicole Stott      | Advanced Practitioner                      | All  |



# Toller Ward Plan 2019—2022



**PeopleCan** make a difference

## Girlington, Lilycroft and Daisy Hill Neighbourhoods

### Total Population of

# 20,124

28.86% Under 16, District: **23.8%**

8.4% Over 65, District: **14.6%**

2.95% Over 80, District: **4.04%**

80.13% Asian British, 14.3% White, 2% mixed Ethnicity, 2% other Ethnic groups, 1.49% Black/African/Caribbean/Black British



This ward is a great place to be involved with through the number of Community Groups and Schools which play an important role in providing opportunities for the whole community.

### What does the community want to see:

Tackle issues such as litter and rubbish for the people of the community.

Safer streets—reduction in drug dealing, speeding and parking around schools



More accountability for Landlords

More opportunities for young children

### Strengths

**Transport Link**— good links to city centre and beyond

**Active Places of Worship**—Churches and Mosques

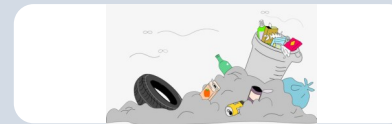
**Strong voluntary Community sector**—including sports clubs supported by community activist.

**Primary and Secondary Education**—strong commitment to improving education



### Environment

**Fly Tipping at 23** compared to district 14.68 at a rate per 1,000



### Community Safety

**16.25 ASB Incidents** compared to district 26.91 at a rate per 1,000



### Health

**39.6%** of Year 6 Children Obese or Overweight compared to district 36.7%



# TOLLER - PLAN ON A PAGE

## WARD PRIORITIES

### Health and wellbeing

### Community Safety

### Environment

## OUR PEOPLE CAN

Support the development of Community partnerships and get involved with key health messages and campaigns

Support VCS organisations and schools to deliver a range of fun physical activities in the ward

Raise awareness of physical activity within families and young people.

Support initiatives to tackle mental health issues - Isolation/Dementia

Raise awareness of the importance of physical activity on mental, cultural and economic health

Develop confidence in the police and encourage residents to report crime through initiatives such as OWL Dob in a dealer and neighbourhood watch.

Tackle school parking through education and enforcement.

Reduce fear of crime through road shows and consultations

Raise awareness of key issues through social media campaigns and information

Support and initiate community clean ups

Encourage recycling champions

Promote People to increase volunteers

Develop environmental projects to improve the local area where appropriate

## OUR PLACE WILL

with partners build engagement in local parks and improve play facilities

Improve local green space and encourage engagement with the wider community such as Scotchman Road Allotments, West Park

increasing police visibility on the streets and at community events

Design out crime through partnership work with businesses, Housing associations and residents.

Coordinate joint action to improve the physical environment by sourcing resources

Identify and tackle hot spot areas for fly tipping

Develop environmental projects including working with businesses and landlords to improve the local area where appropriate

## HOW WILL WE KNOW THINGS HAVE CHANGED

Reduce the number of children leaving primary school obese

Reduce inactivity of children aged 8 – 11

No of health initiatives and activities

Increase in active Neighbourhood watches and residents registered to OWL

No of reports to 101

reduction in crime statistics.

Improved physical appearance of the environment promoted through communication channels

Increase the number of resident recycling with the ward

No of community clean ups

Reduction in fly tipping