

Manningham



Ward Plan 2019 - 2022



For more information contact: Kate Lightstead, Ward Officer, Bradford City Council

Introduction

Welcome to the Manningham Ward Action Plan

This Plan sets out the rationale for community planning arrangements the Manningham Ward within the Bradford West Constituency Area.

The plan will help to achieve better outcomes for our communities by addressing local priorities. It focuses on people' s needs and promotes our work to reduce People and Place based issues.

This plan is an agreement between the communities of the Manningham ward and local service providers that sets out how we work together to target our resources in the most effective way and highlights how we will review and report on progress, allowing us to realign priorities as needed.

The community is at the heart of this plan, and through 2018/19 we have worked hard to ensure more effective partnership working, so we involve communities in a greater range of participation.

We want to improve how we deliver community plans, more effective community engagement and greater community participation.

The plan brings communities closer together with local service providers to plan and deliver better services which meet the needs of the people who use them.

Partners in the Manningham ward Include:

- Manningham Master Plan Network
- Health Partnership (Community 4)
- JUMP: Local delivery partnership
- Community and voluntary Sector
- Neighbourhood Policing Team



Context

The Ward Plan and Assessment Process

Community planning is the process by which councils and other public bodies work with local people, businesses and voluntary groups. By doing so, partners aim to plan and deliver better services, improving the lives of people who live in the local community.

The Ward Assessment and plan is designed to inform ward working. It summarises the strengths and issues within the Manningham Ward. This evidence comes from a number of sources including information gained from consultations through our partners; hands on support and direction from Elected Ward Councillors in their role as community champions and regular contact with members of the local community.

The Council Ward Officers play a critical role in summarising this information into findings. The most important issues are

presented in the ward plan. Ward plans are approved annually by elected members at the Area Committee, regular updates are also provided.

Co-ordination of Services

The ward plans provides an opportunity to coordinate services, this ensures that problem solving is effective and efficient utilising local networks to identify concerns and opportunities early to provide efficiency and improved local outcomes for the community. Central to an effective ward plan is the coordination by ward officers of public and Voluntary sector services.

Ward officers actively support local networks and partnership involving the public, private and third sector as well as the community to build on local assets, improve community cohesion and activity.



Neighbourhoods

Neighbourhoods:

Cornwall's

White Abbey Rd

Lister

Carlise

Community Assets:

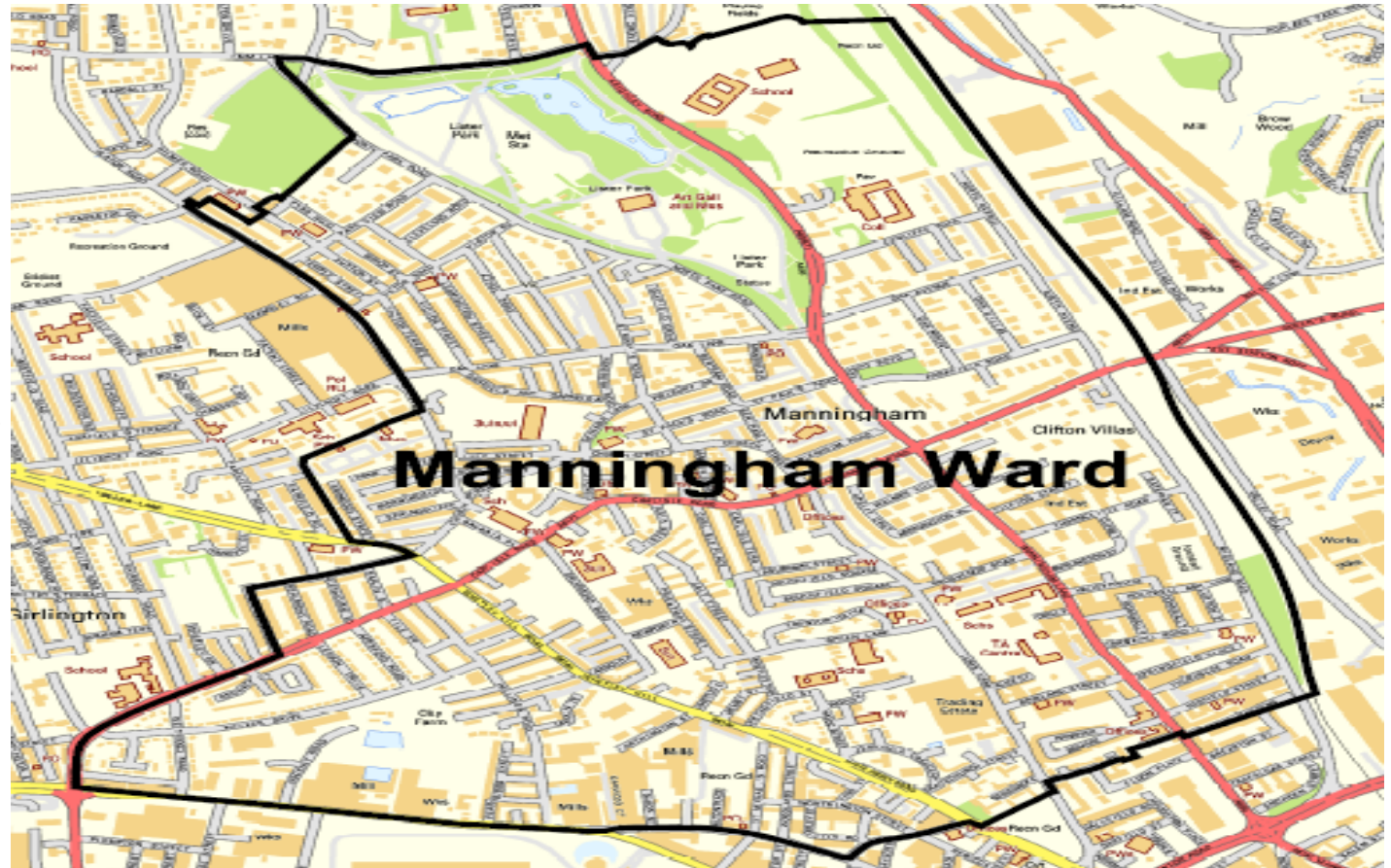
Established voluntary and community sector

Lister Park

Cartwright Hall

Areas of heritage including Mills and housing

Excellent transport networks



Manningham Ward Plan 2019 - 2022



Engaging Communities

This ward plan is based on several community conversations throughout the year at neighbourhood and ward forums, community events and partnerships.

The process does not revolve around what agencies can do alone but what communities, VCS partners and public sector agencies can collectively achieve if they work closely together.

The ward plan process aims to draw the community into solutions and broker a relationship of civic responsibility.

The key is to establish a partnership process that will not be overly demanding on resources, whilst at the same time maximising the important contributions that communities, voluntary organisations and public bodies can make to delivering better outcomes for all.

Our Approach

Asset Based Community Development

Asset-based community development, put very simply, is a bottom up approach to working with communities that starts from a place that celebrates the strengths and assets communities have to draw from rather than starting from a point of focusing on what is wrong in communities and needs fixing.

By starting from what is what is strong rather than what is wrong, asset-based community development offers an opportunity to build on the skills of local residents and ensures the power of local associations is recognised.



Bradford West Team and Manningham Councillors

Bradford West covers a diverse area from Bradford city centre to beyond Thornton and to the Calderdale boundary. We take in urban, suburban and rural, residential and industrial and include well known locations such as Bradford Royal Infirmary, St Luke's Hospital, Chellow Dene, Listers Mill, Bradford University and College, Cannon Mills and Heaton Woods. Our mix of communities includes single pensioner households, large families with young children, and people from many different religious and cultural backgrounds.

Bradford West includes the electoral wards of :

- Thornton & Allerton - Sandy Lane, Allerton, Thornton
- City Ward - Horton Grange, Bradford City Centre
- Clayton & Fairweather Green including Lower Grange
- Toller - Daisy Hill, Girlington, Lilycroft
- Heaton - Frizinghall, Upper Heaton, Heaton
- Manningham - Manningham



Councillor
Sarfraz Nazir



Councillor
Shabir Hussain



Councillor
Sameena Akhtar

Officer	Role	Wards covered
Noreen Akhtar	Area Co-ordinator	All
Masood Gondal	Ward Officer	Thornton & Allerton and Toller
Jo Beecroft	Ward Officer	Clayton & Fairweather Green and Lower Grange
Arshad Mahmood	Ward Officer	City and Heaton
Kate Lightstead	Ward Officer	Manningham
Simon Drake	Parks and Street Cleansing manager	All
Richard Westerman	Warden Environmental Enforcement Officer	All
Nicole Stott	Advanced Practitioner	All



Manningham Ward Plan 2019—



Cornwall's, Victor Street, White Abbey,

Total Population of

19,986

28.8% of the population is under 16 compared to the district average of 23% .
7.86% are over 65 compared to the district average 15%

77% Asian British, 15% White, 8% Other Ethnicity



This ward is in the heart of Bradford and rich in architectural heritage. One of the youngest populations in the country and presents a strong cultural offer.

What does the community want to see:

"I feel blessed to live here, the history of the place and I know my neighbours".

"I would like to see a better use of open green spaces"

" Drugs is an issue in the area everywhere you just get used to it"

"The community need to love where they live"



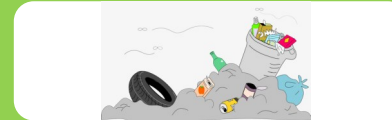
Strengths

- Rich cultural and architectural heritage
- Resilient community and voluntary sector
- Iconic Green spaces
- Enterprising and entrepreneurial culture
- Outstanding primary education



Environment

Fly Tipping at 16.86 compared to district 14.68 at a rate per 1,000



Community Safety

25.42 ASB Incidents compared to district 26.91 at a rate per 1,000



Children and young people

The attainment score is 41% compared to the district average of 42.7%.

40% of year 6 pupils are obese compared to the district average of 36 %



MANNINGHAM - PLAN ON A PAGE

WARD PRIORITIES

Environment

Children and Young People

Community Safety

OUR PEOPLE CAN

Take Part in walk to school initiatives

Develop environmental campaigns to increase social responsibility

Join volunteering schemes and take pride in public and green spaces

Get to know your neighbour

Be Positive role models for young people in your community

Take up opportunities to support local youth work

Work with school and young people in the neighbourhood

Encourage own children and grandchildren to take pride in Manningham

Join or establish a neighbourhood watch

actively report Drug dealing activity

Organise community street parties and/or events

Encourage neighbours to take pride in their local community

OUR PLACE WILL

Co-ordinate long term environmental solutions to ongoing fly tipping issues

Improve and maintain existing public parks and Green Spaces

Coordinate place meetings with specific days of action around key environmental concerns e.g. recycling, gullies, un adopted streets

Work with primary schools to develop educational environmental activities.

Provide safe places for young people to enjoy.

Support a thriving voluntary sector that supports young people's aspiration, mental health and voice and influence.

create opportunities where young people can be healthy active and play sport.

Design out crime through improving public spaces.

Visible presence from police at key hot spot locations

A vibrant community that celebrate diversity

HOW WILL WE KNOW THINGS HAVE CHANGED

No of community clean ups taking place

No of multi agency days of action

No of schools supported

No of supported community/voluntary groups tackling environmental concerns

No of street champions recruited

Improve awareness through media and good news stories and at public events.

A Manningham network of providers for young people and children.

An improvement in the opportunities for girls in

Increased opportunities for health initiatives and activities.

Increase in active neighbourhood watches.

Increased confidence and trust in police through publishing success stories

Increase in community events and activities