

Clayton, Fairweather Green and Lower Grange



Ward Plan 2019 - 2022



For more information contact: Jo Beecroft Ward Officer, Bradford City Council

Introduction

Welcome to the Clayton , Fairweather Green and Lower Grange Ward Action Plan.

This Plan sets out the rationale for community planning arrangements for the Clayton, Fairweather Green and Lower Grange Ward within the Bradford West Constituency Area.

The plan will help to achieve better outcomes for our communities by addressing local priorities. It focuses on peoples needs and promotes our work to reduce People and Place based issues.

This plan is an agreement between the communities of the Clayton, Fairweather Green and Lower Grange ward and local service providers that sets out how we work together to target our resources in the most effective way and highlights how we will review and report on progress, allowing us to re-align priorities as needed.

The community is at the heart of this plan, and through 2018/19 we have worked hard to ensure more effective

partnership working, so we involve communities in a greater range of participation.

We want to improve how we deliver community plans, more effective community engagement, and greater community participation.

The plan brings communities closer together with local service providers to plan and deliver better services which meet the needs of the people who use them.

Partners in the Clayton, Fairweather Green and Lower Grange ward Include:

- Health Partnership (Community 10)
- Neighbourhood Policing Team
- Registered Social Landlords
- Community Partnerships i.e. Lower Grange, Clayton Parish Council etc



Context

The Ward Plan and Assessment Process

Community planning is the process by which councils and other public bodies work with local people, businesses and voluntary groups. By doing so, partners aim to plan and deliver better services, improving the lives of people who live in the local community.

The Ward Assessment and plan is designed to inform ward working. It summarises the strengths and issues within the Clayton, Fairweather Green and Lower Grange Ward. This evidence comes from a number of sources including information gained from consultations through our partners; hands on support and direction from Elected Ward Councillors in their role as community champions and regular contact with members of the local community.

The Council Ward Officers play a critical role in summarising this information into findings. The most important issues are

presented in the ward plan. Ward plans are approved annually by elected members at the Area Committee, regular updates are also provided.

Co-ordination of Services

The ward plans provides an opportunity to coordinate services this ensures that problem solving is effective and efficient utilising local networks to identify concerns and opportunities early to provide efficiency saving and improved local outcomes for the community. Central to an effective ward plan is the coordination by ward officers of public sector services.

Ward officers actively support local networks and partnership involving the public, private and third sector as well as the community to build on local assets, improve community cohesion and activity.



Neighbourhoods

Neighbourhoods

Lower Grange

Clayton

Fairweather Green

Community Assets

Bradford Beck

Hanging Fall Wood

Clayton Library

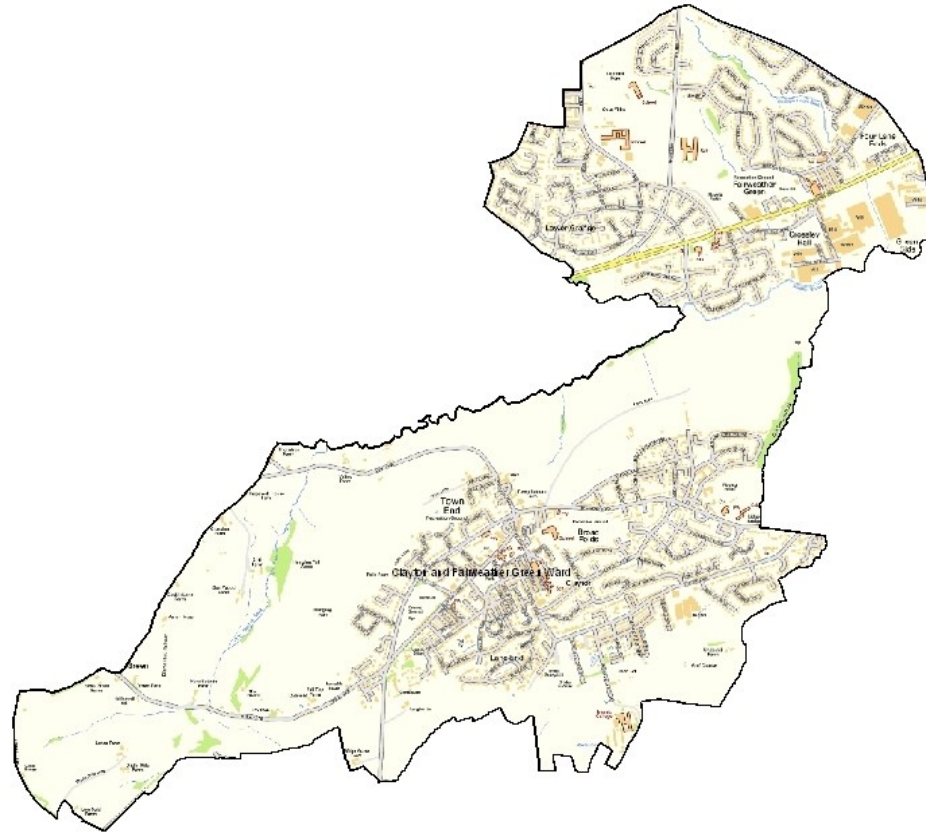
Victoria Park

Ladyhill Park

Thornaby Drive Play Area

Lower Grange Play Area

Clayton and Fairweather Green Ward



Engaging Communities

This ward plan is based on several community conversations throughout the year at neighbourhood and ward forums, community events, and partnerships.

The process does not revolve around what agencies can do alone but what communities, VCS partners and public sector agencies can collectively achieve if they work closely together.

The ward plan process aims to draw the community into solutions and broker a relationship of civic responsibility.

The key is to establish a partnership process that will not be overly demanding on resources, whilst at the same time maximising the important contributions that communities, voluntary organisations and public bodies can make to delivering better outcomes for all.

Our Approach

Asset Based Community Development

Asset-based community development, put very simply, is a bottom up approach to working with communities that starts from a place that celebrates the strengths and assets communities have to draw from rather than starting from a point of focusing on what is wrong in communities and needs fixing.

By starting from what is what is strong rather than what is wrong, asset-based community development offers an opportunity to build on the skills of local residents and ensures the power of local associations is recognised.



Bradford West Team and Clayton, Fairweather Green and Lower Grange Councillors

Bradford West covers a diverse area from Bradford city centre to beyond Thornton and to the Calderdale boundary. We take in urban, suburban and rural, residential and industrial and include well known locations such as Bradford Royal Infirmary, St Luke's Hospital, Chellow Dene, Listers Mill, Bradford University and College, Cannon Mills and Heaton Woods. Our mix of communities includes single pensioner households, large families with young children, and people from many different religious and cultural backgrounds.

Bradford West includes the electoral wards of :

- Thornton & Allerton - Sandy Lane, Allerton, Thornton
- City Ward - Horton Grange, Bradford City Centre
- Clayton ,Fairweather Green and Lower Grange - Clayton, Lower Grange, Fairweather Green
- Toller - Daisy Hill, Girlington, Lilycroft
- Heaton - Frizinghall, Upper Heaton, Heaton
- Manningham - Manningham



Councillor
Sinead Engel

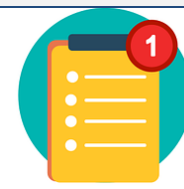


Councillor
Michelle
Swallow



Councillor Carol
Thirkill

Officer	Role	Wards covered
Noreen Akhtar	Area Co-ordinator	All
Masood Gondal	Ward Officer	Thornton & Allerton and Toller
Jo Beecroft	Ward Officer	Clayton, Fairweather Green & Lower Grange
Arshad Mahmood	Ward Officer	City and Heaton
Kate Lightstead	Ward Officer	Manningham
Simon Drake	Parks and Street Cleansing manager	All
Richard Westerman	Warden Environmental Enforcement Officer	All
Nicole Stott	Advanced Practitioner	All



Clayton, Fairweather Green and Lower Grange Ward Plan 2019—2022



Clayton, Lower Grange, Fairweather Green

Total Population of
17,238

25.07% Under 16 District 23%
14.07% Over 65 District 15%
4.11% Over 80 District 4.4%

27.6% Asian British, White 66.16 7% Other Ethnicity 1.48%



This ward is a great place to be involved with through the number of Community Groups and Schools which play an important role in providing opportunities for children.

What does the community want to see:

Tackle issues such as Obesity and Road Safety for the people of the community.

Some people are turning a blind eye ... we need to feel more comfortable.

“A Healthy Clayton , Fairweather Green and Lower Grange”
Let’s get the Community Active.



We need to encourage more volunteers

Strengths


Many Green Spaces—Bradford Beck, Fall Top, Rocky Delph

Education Attainment 8 score-45.20

Places of Worship—Church and Mosques

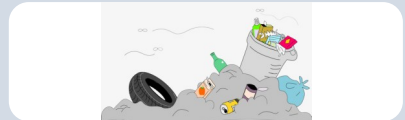
Significant amount of **Sports and Clubs**

Strong Community Spirit and sense of belonging




Environment

Fly Tipping at 9.11 compared to district 14.68 at a rate per 1,000




Community Safety

ASB Incidents 22.97 compared to district 26.91 at a rate per 1,000



Health

38.08% of Year 6 Children Obese or Overweight



Clayton, Fairweather Green and Lower Grange- PLAN ON A PAGE

WARD PRIORITIES

Health and wellbeing

Community Safety

Environment

OUR PEOPLE CAN

Support the development of the Community partnerships and the involvement of local residents with key health messages and campaigns

Support the VCS organisations and schools to deliver a range of fun physical activities throughout the ward

Volunteers and active residents to local solutions to community Health needs

Raise awareness of the importance of children's physical activity with parents and families and young people.

Develop confidence in the police and encourage residents to report crime through initiatives such as Dob in a dealer and neighbourhood watch.

Tackle school parking through education and enforcement. People can walk to school.

Reduce fear of crime through road shows and consultations

Behaviour Change through social media campaigns and information

Support and initiate community clean ups

Encourage recycling champions

Promote People to increase volunteers

Develop environmental projects to improve the local area where appropriate

OUR PLACE WILL

Build engagement in local parks and improve play facilities

Improve local green space and encourage engagement with the wider countryside such as Bradford Beck

Support specific areas with patrols such as Clayton village, Lower Grange and Thornton Road

Design out crime through partnership work with businesses, Housing associations and residents.

Coordinate joint action to improve the physical environment by sourcing resources

Identify and tackle hot spot areas for fly tipping

Develop environmental projects to improve the local area where appropriate

HOW WILL WE KNOW THINGS HAVE CHANGED

Reduce the number of children leaving primary school obese

Reduce inactivity of children aged 8-11

No of health initiatives and activities

Increase in active Neighbourhood watches

Encourage reporting to 101 to build intelligence for police to tackle hotspots and ward issues and patterns.

Feedback at Neighbourhood forums, and neighbourhood watch coordinators. OTHER COMMUNITY MEETINGS.

Improved physical appearance of the environment promoted through communication channels

Increase the number of resident recycling with the ward

No of community clean ups

Reduction in fly tipping