

# City

## Ward Plan 2019 - 2022



# Introduction

---

Welcome to the City Ward Action Plan

This plan sets out the rationale for community planning arrangements the City Ward with in the Bradford West Constituency Area.

The plan will help to achieve better outcomes for our communities by addressing local priorities. It focuses on local peoples needs and promotes our work to reduce People and Place based issues.

This plan is an agreement between the communities of the City ward and local service providers that sets out how we work together to target our resources in the most effective way and highlights how we will review and report on progress, allowing us to realign priorities as needed.

The community is at the heart of this plan and through

2018/19 we have worked hard to ensure more effective partnership working, so we involve communities in a greater range of participation.

We want to improve how we deliver community plans, increase effective community engagement and greater community participation.

The plan brings communities closer together with local service providers to plan and deliver better services which meet the needs of the people who use them.

## Partners in the City ward Include:

- Health Partnership (Community 6 & H2PR)
- Neighbourhood Policing Team
- Registered Social Landlord
- West Yorkshire Fire Services



# Context

---

## The Ward Plan and Assessment Process

Community planning is the process by which councils and other public bodies work with local people, businesses and voluntary groups. By doing so, partners aim to plan and deliver better services, improving the lives of people who live in the local community.

The Ward Assessment and plan is designed to inform ward working. It summarises the strengths and issues within the City Ward. This evidence comes from a number of sources including information gained from consultations through our partners; hands on support and direction from Elected Ward Councillors in their role as community champions and regular contact with members of the local community.

The Council Ward Officers play a critical role in summarising this information into findings. The most important issues are presented in the ward plan. Ward plans are approved

annually by elected members at the Area Committee, regular updates are also provided.

## Co-ordination of Services

The ward plans provides an opportunity to coordinate services this ensures that problem solving is effective and efficient utilising local networks to identify concerns and opportunities early to provide efficiency saving and improved local outcomes for the community. Central to an effective ward plan is the coordination by ward officers of public sector and voluntary services.

Ward officers actively support local networks and partnership involving the public, private and third sector as well as the community to build on local assets, improve community cohesion and activity.



# Neighbourhoods

## Neighbourhoods:

Horton Grange

Bradford City Centre

## Community Assets:

Horton Park & green spaces

Spencer Fields

Copthorne Liner Park

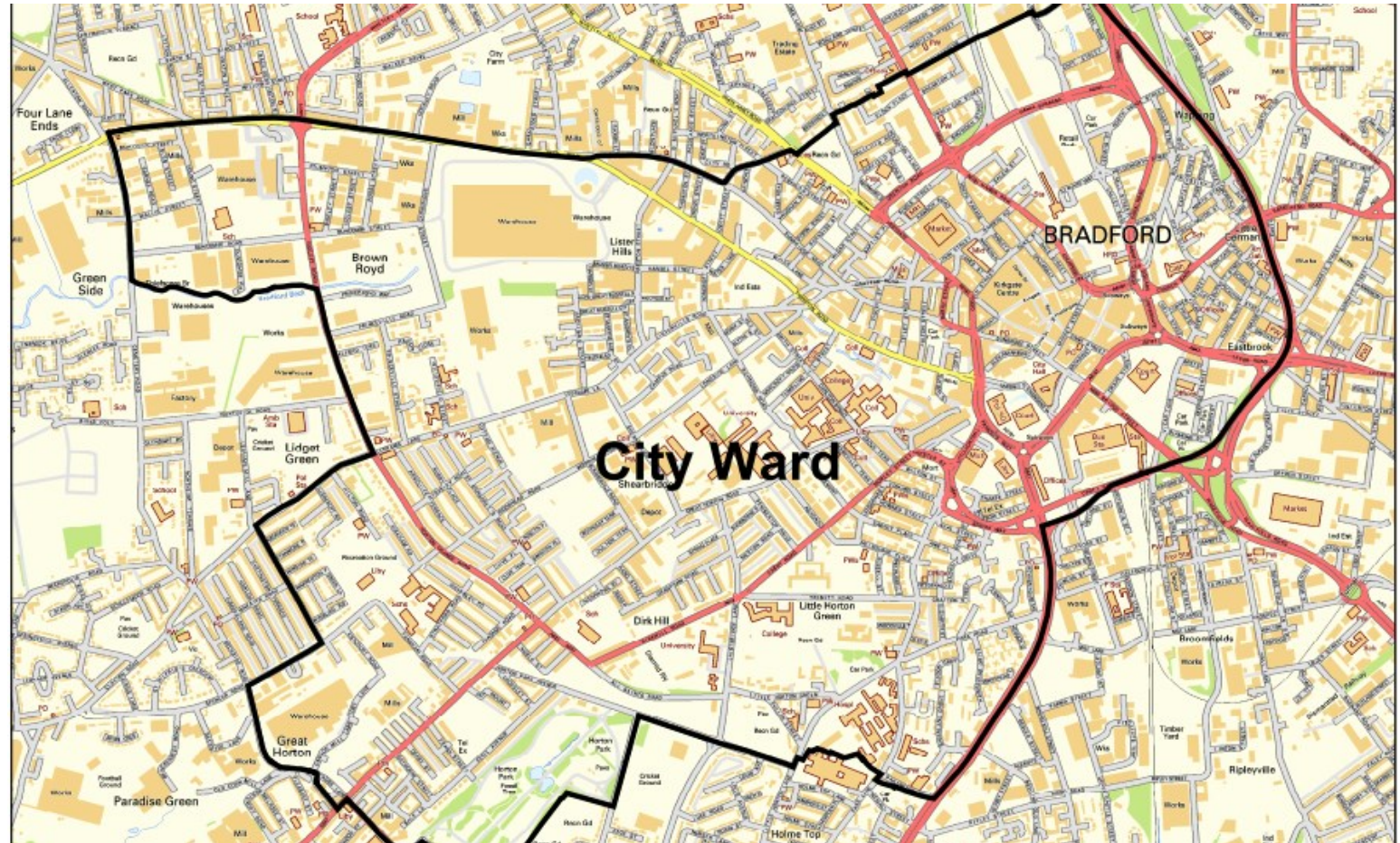
Woodhead Fields

University

Bradford College

Grange Interlink

Khidmet Centre



City Ward Plan 2019 - 2022



# Engaging Communities

This ward plan is based on several community conversations throughout the year at neighbourhood and ward forums, community events and partnerships.

The process does not revolve around what agencies can do alone but what communities, VCS partners and public sector agencies can collectively achieve if they work closely together.

The ward plan process aims to draw the community into solutions and broker a relationship of civic responsibility.

The key is to establish a partnership process that will not be overly demanding on resources, whilst at the same time maximising the important contributions that communities, voluntary organisations and public bodies can make to delivering better outcomes for all.

## Our Approach

### Asset Based Community Development

Asset-based community development, put very simply, is a bottom up approach to working with communities that starts from a place that celebrates the strengths and assets communities have to draw from rather than starting from a point of focusing on what is wrong in communities and needs fixing.

By starting from what is what is strong rather than what is wrong, asset-based community development offers an opportunity to build on the skills of local residents and ensures the power of local associations is recognised.



# Bradford West Team and City Ward Councillors

Bradford West covers a diverse area from Bradford city centre to beyond Thornton and to the Calderdale boundary. We take in urban, suburban and rural, residential and industrial and include well known locations such as Bradford Royal Infirmary, St Luke's Hospital, Chellow Dene, Listers Mill, Bradford University and College, Cannon Mills and Heaton Woods. Our mix of communities includes single pensioner households, large families with young children, and people from many different religious and cultural backgrounds.

## Bradford West includes the electoral wards of :

- Thornton & Allerton - Sandy Lane, Allerton, Thornton
- City Ward - Horton Grange, Bradford City Centre
- Clayton & Fairweather Green - Clayton, Fairweather Green
- Toller - Daisy Hill, Girlington, Lilycroft
- Heaton - Frizinghall, Upper Heaton, Heaton
- Manningham - Manningham



Councillor  
Aneela Ahmed

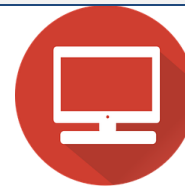


Councillor  
Nazam Azam



Councillor  
Shakeela Lal

Officer	Role	Wards covered
Noreen Akhtar	Area Co-ordinator	All
Masood Gondal	Ward Officer	Thornton & Allerton and Toller
Jo Beecroft	Ward Officer	Clayton & Fairweather Green and Lower Grange
Arshad Mahmood	Ward Officer	City and Heaton
Kate Lightstead	Ward Officer	Manningham
Simon Drake	Parks and Street Cleansing manager	All
Richard Westerman	Warden and Environmental Enforcement	All
Nicole Stott	Advanced Practitioner	All



# City Ward Plan 2019—2022



## Horton Grange, Bradford City Centre

### Total Population of

# 24,984

Under 16 similar to district, **73% 16-64** compared to 61% district  
**5% Over 65** compared to 15% district  
**1.6% Over 80** compared to 4.4% district

59% Asian British, 25% White, 6% Other Ethnicity



City is a gate way to Bradford. Brilliant University and College attracting students from across the globe. World renowned eating places. Strong Community Voluntary Sector.

### Strengths

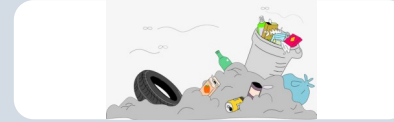
Very strong voluntary/community support, number of local community groups, Community Centres i.e. Khidmet Centre and Grange Interlink



A thriving business sector, a very mixed community made up of different cultures. Horton Park and a number of green spaces for the local community i.e. Horton Allotments

### Environment

**Fly Tipping at 13.65** compared to district 14.68 at a rate per 1,000



### Community Safety

**56.00 ASB Incidents** compared to district 26.91 at a rate per 1,000



### Health

**42.35%** of Year 6 Children Obese or Overweight District wide is 36.70%



### What does the community want to see:

Tackle issues such as Obesity in young people no exercise to much fast food

Better use of community facilities in Ward, should be available to local people

Better environment people take responsibility for their rubbish

Reduce crime and fear of crime, more Police



# CITY - PLAN ON A PAGE

## WARD PRIORITIES

### Health and wellbeing

### Community Safety

### Environment

## OUR PEOPLE CAN

Increase awareness of the importance of children's physical activity

Support VCS organisations and schools to deliver a range of fun physical activities throughout the ward

Volunteers and become active residents to local solutions to community Health needs

Support the development of the Community partnerships and health initiatives

Support police and encourage residents to report crime through initiatives such as Dob in a dealer and neighbourhood watch.

Tackle school parking through education and enforcement. People can walk to school.

Help reduce fear of crime by attending and organising road shows and consultations

increase behaviour Change through social media campaigns and information

Support and initiate community clean ups

Encourage recycling champions

Promote People to increase volunteers

Develop environmental projects to improve the local area where appropriate i.e. Abandoned cars

## OUR PLACE WILL

Build engagement in local parks and improve play facilities

Improve local green space and encourage engagement with local groups such as Friends of Horton park

Support specific areas with patrols such as Great Horton Road, Horton Grange, Legrams lane

Design out crime through partnership work with businesses, Housing associations and residents.

Coordinate joint action to improve the physical environment by sourcing resources

Identify and tackle hot spot areas for fly tipping and abandoned vehicles

Develop environmental projects to improve the local area where appropriate

## HOW WILL WE KNOW THINGS HAVE CHANGED

Reduce the number of children leaving primary school obese

Reduce inactivity of children aged 8 – 11

increase No. of health initiatives and activities

Increase in active Neighbourhood watches

No of reports to 101

Feedback at Neighbourhood forums, and neighbourhood watch coordinators

Improved physical appearance of the environment promoted through communication channels

Increase the number of resident recycling with the ward

No. of community clean ups