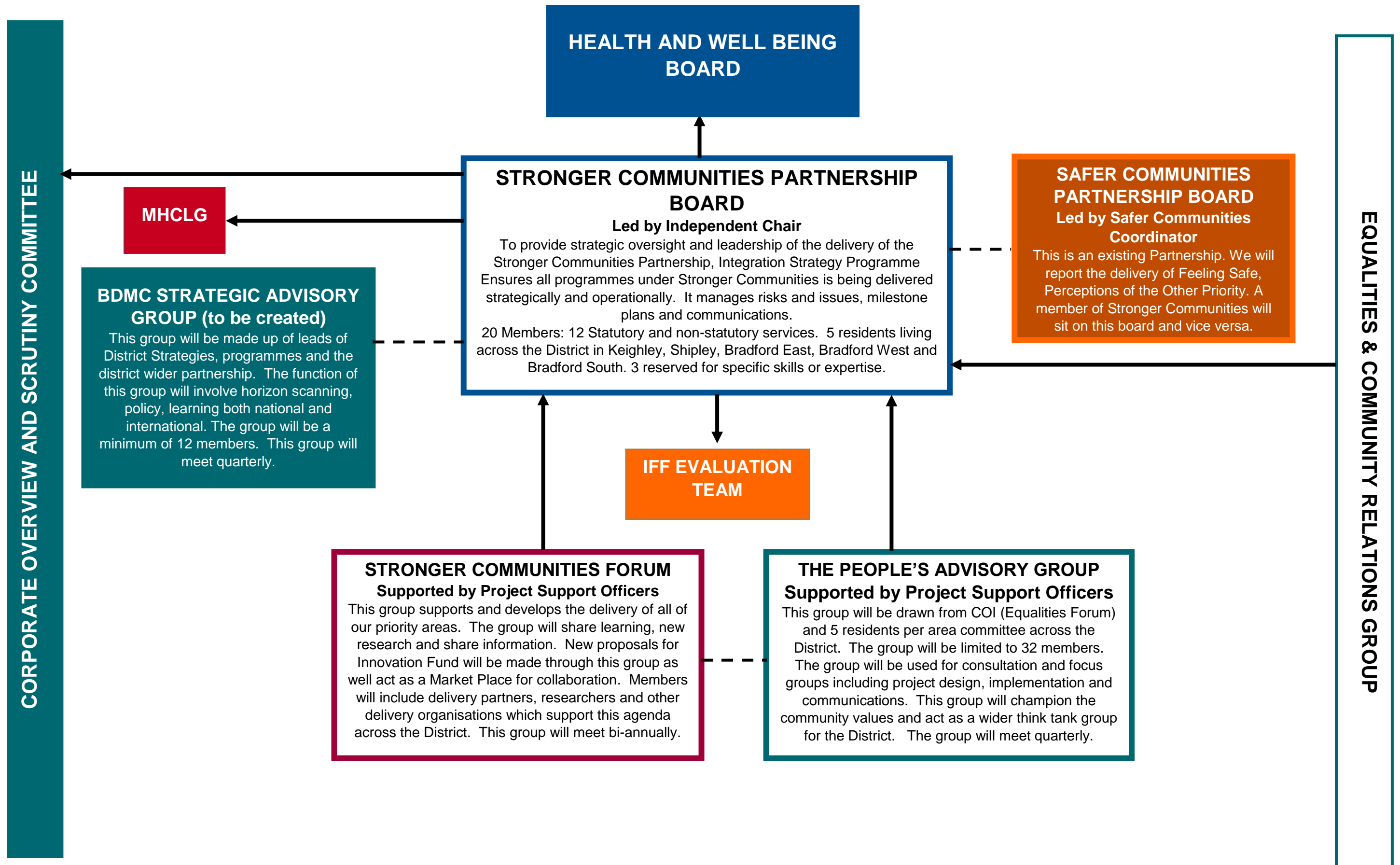


STRONGER COMMUNITIES PARTNERSHIP GOVERNANCE STRUCTURES

Appendix C

15.11.2018 v1.0



HEALTH AND WELL BEING BOARD

STRONGER COMMUNITIES PARTNERSHIP BOARD
Led by Independent Chair
 To provide strategic oversight and leadership of the delivery of the Stronger Communities Partnership, Integration Strategy Programme Ensures all programmes under Stronger Communities is being delivered strategically and operationally. It manages risks and issues, milestone plans and communications.
 20 Members: 12 Statutory and non-statutory services. 5 residents living across the District in Keighley, Shipley, Bradford East, Bradford West and Bradford South. 3 reserved for specific skills or expertise.

SAFER COMMUNITIES PARTNERSHIP BOARD
Led by Safer Communities Coordinator
 This is an existing Partnership. We will report the delivery of Feeling Safe, Perceptions of the Other Priority. A member of Stronger Communities will sit on this board and vice versa.

MHCLG

BDMC STRATEGIC ADVISORY GROUP (to be created)
 This group will be made up of leads of District Strategies, programmes and the district wider partnership. The function of this group will involve horizon scanning, policy, learning both national and international. The group will be a minimum of 12 members. This group will meet quarterly.

IFF EVALUATION TEAM

STRONGER COMMUNITIES FORUM
Supported by Project Support Officers
 This group supports and develops the delivery of all of our priority areas. The group will share learning, new research and share information. New proposals for Innovation Fund will be made through this group as well act as a Market Place for collaboration. Members will include delivery partners, researchers and other delivery organisations which support this agenda across the District. This group will meet bi-annually.

THE PEOPLE'S ADVISORY GROUP
Supported by Project Support Officers
 This group will be drawn from COI (Equalities Forum) and 5 residents per area committee across the District. The group will be limited to 32 members. The group will be used for consultation and focus groups including project design, implementation and communications. This group will champion the community values and act as a wider think tank group for the District. The group will meet quarterly.

CORPORATE OVERVIEW AND SCRUTINY COMMITTEE

EQUALITIES & COMMUNITY RELATIONS GROUP