



CCGs working together

Airedale, Wharfedale and Craven CCG
Bradford City CCG
Bradford Districts CCG



SEND Strategic Partnership Board Terms of Reference

Purpose

The purpose of the SEND Strategic Partnership board is to:

- develop best policy, practice, service and provision for children and young people with SEND across the Local Area
- ensure that services are child and family centered and responsive to need
- collaborate more effectively across services, school, settings, MATs etc. for the benefit of children and young people with SEND
- build capacity
- establish the local offer for SEND across all services
- intervene in a timely and effective manner where appropriate
- ensure sufficiency of places
- collaborate to ensure signposting, QA and safeguarding of children and young people

Membership

Alijan Haider	Director of Strategic Partnership, NHS Bradford District, NHS Bradford City & NHS Airedale, Wharfedale & Craven CCGs
Angela Vinnecombe	Executive Headteacher, Ingrow, Long Lee Primaries
Ann Andrew	Headteacher High Park Special School
Annette Jackson	DMO Consultant Paediatrician, Community/Neuro-disability, Bradford Teaching Hospitals NHS Foundation Trust
David Byrom	Head of Service LA & Resources, CBMDC
Debbie Jowett	Manager of SENDIASS, Barnardo's
Dianne Richardson	Headteacher, Swain House Primary
Dominic Wall	Executive Headteacher, Southfield Grange Trust
Gail Southeran	Riddlesden St Mary's CE Primary School
Gareth Flemyng	Service Manager (Disabilities), Disability team, CBMDC
Ian Morrel	Headteacher, Titus Salt School
Jenny Cryer	Assistant Director Performance, Commissioning & Partners, CBMDC
Jim Hopkinson	Deputy Director, Social Care
Julia Elliot	Children & Families Services Operational Manager, BDCT
Julie Bruce	Chair, The Parents' Forum for Bradford and Airedale (PFBA)
Lynn Donohue	Strategic SEND and Behaviour Manager
Marium Haque (<i>Chair</i>)	Deputy Director, Education and Learning
Mark Anslow	Head of Service, Targeted Early Help, CBMDC
Gladys Rhodes White	Interim Strategic Director, Childrens Services
Navtej Chohan	Principal, Shipley College
Peter Horner	Bradford CVS
Rob Mitchell	Health & Wellbeing (Adults)
Ruksana Sardar-Akram	Senior public health manager, Public Health, CBMDC
Ruth Hayward	Head of Commissioning (Women and Children's), NHS Bradford District and City and Airedale CCGs
Sally Townend	Social Care Transitions
Sasha Bhat	Head of Commissioning (Mental Health), NHS
Sharon Bowring	DMO Consultant Paediatrician, Airedale NHS Foundation Trust
Wendy Utley	Down Syndrome T&SS and Parent



CCGs working together

Airedale, Wharfedale and Craven CCG
Bradford City CCG
Bradford Districts CCG

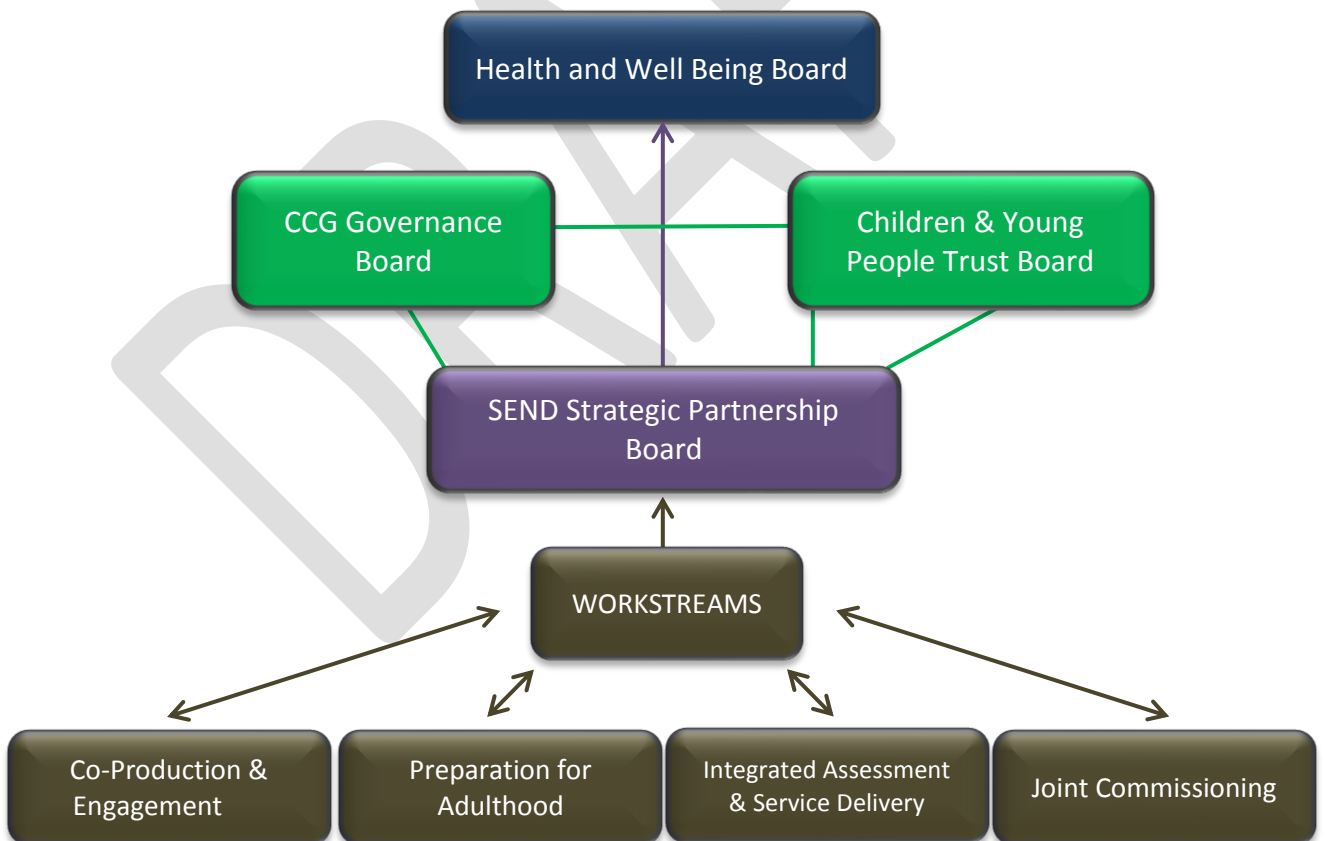


MEMBERSHIP

NB: NO SUBSTITUTES WILL BE ACCEPTED OTHER THAN THE IDENTIFIED DEPUTIES FOR EDUCATION PROVIDERS AND THE VOLUNTARY COMMUNITY SECTOR (VCS)

Governance structure

- The SEND Strategic Partnership Board (SPB) reports directly to the Health and Well Being Board (H&WBB), CCG Governance Board and Children & Young People Trust Board on a quarterly basis with updates of progress.
- Set the Bradford area Strategy for Children and Young People with Special Educational Needs and Disabilities.
- Annually it reports on each priority and the impact against the outcomes framework.
- Monitoring progress of the SEND Workstreams on a regular basis.
- Colleagues responsible for awareness-raising at other boards (those in Green) ensure they are up to date from the SPB meetings. Reports to these groups can be verbal or by using the tracker. The frequency of these reports needs agreeing by each board.
- The format of reports to the H&WBB needs agreeing.



The function of each Board



CCGs working together

Airedale, Wharfedale and Craven CCG
Bradford City CCG
Bradford Districts CCG



Health and Well Being Board

The Health and Wellbeing Board brings together leaders from the local health and care system, including the Council, the NHS and the Community and Voluntary sector.

The Board provides strategic direction to a wide range of organisations that organise health and wellbeing services, and supports people to:

- take good care of their own health, fitness and wellbeing
- help more people to take control of their health
- have more of a say in how their health and care needs are met.

Children's Trust

Bradford Children's Trust is a local partnership of organisations responsible for the strategic framework and delivery of services to children, young people and families.

SEND Strategic Partnership Board

The purpose of the SEND Strategic Partnership board is to:

- develop best policy, practice, service and provision for children and young people with SEND across the Local Area
- ensure that services are child and family centred and responsive to need
- collaborate more effectively across services, school, settings, MATs etc. for the benefit of children and young people with SEND
- build capacity
- establish the local offer for SEND across all services
- intervene in a timely and effective manner where appropriate
- ensure sufficiency of places
- collaborate to ensure signposting, QA and safeguarding of children and young people

WORKSTEAMS

The purpose of the SEND Partnership Board Workstream is to:

- take responsibility for the operational management of the SEND developments across the local area. These will be determined by the SEND Code of Practice 2014.
- prepare reports on progress for the SEND & Behaviour Partnership Board
- oversee the readiness of and prepare stakeholders for any Ofsted/CQC inspections and external reviews related to SEND
- to act as an interface between the Programme Board and those responsible for actions and working with the wider stakeholders.

Review

The membership, purpose, terms of reference and frequency of SEND Strategic Partnership Board Workstream meetings to be reviewed annually.

Frequency of meetings

Each month



CCGs working together

Airedale, Wharfedale and Craven CCG
Bradford City CCG
Bradford Districts CCG



Ways of working

- Join the Behaviour and SEND strategic groups in order to develop a more cohesive strategy that supports children and young people in Bradford
- Deepen multi-agency collaboration across the Education, Health and Care teams so that we work in a more cohesive and joined-up way
- **Ensure services consider the voice of child and/or parents/carers.**
- Work together efficiently and smartly in order to maximise resources, expertise and time
- Celebrate and explore ways in which we can harvest our collective professional capital by sharing best practice, expertise and knowledge across all teams
- Know and understand how our strategy sits within the national and local changing education landscape
- Use the self-evaluation for the Local Area SEND inspection as an opportunity to have deeper understanding of the individual and collective roles, responsibilities and accountabilities to our own service and the Ofsted inspection of the local area

DRAFT