

## **Appendix 3**

### **CSE Information for Bradford South**

Across all districts in Bradford, the Youth Service offers a broad menu of engaging activity delivered from easily accessible locality bases that ensure pathways of support to young people that are preventative and offer early intervention. The Youth Service provides around 90 sessions of youth work provision per week across the district, a significant proportion of this is open access, enabling a safe, non-stigmatised space for voluntary engagement with young people. This space enables early identification of needs including those at risk of or vulnerable to CSE, and through trusting relationships developed in provision Youth Workers are able to provide early identification, lower level interventions and support. The Youth Service works with young people, identifying with them, their concerns, working with young people to better understand the consequences of their behaviours and of others towards them and to support them to reduce their risk. This area of work is often undertaken before young people are engaged in specific support services. Where youth workers identify concerns they pathway individuals to the district wide CSE hub for further assessment. Likewise, the Youth Service receives referrals from the CSE hub for young people identified as Tier 1 (low risk), identified as those who undertake or are in peer groups where there are concerns or risk taking behaviours. The Youth Service Youth Workers provide 1-1 support, and using a 'Signs of Safety' framework to enable individual young people to develop a local support network and to empowered them to make positive choices in their lives.

The team have responded very sensitively to a number of CSE concerns presented to them. The team work in partnership with local voluntary and community groups, proactively engaging to develop some local initiatives to raise awareness around this issue. This has led to some meaningful conversations in local communities, youth projects, schools and the college. Awareness activities have been designed to be engaging and innovative, using a range of methods that are educative, inclusive, informative and young people friendly in order to reach wider cohorts of young people.

A range of initiatives have been delivered to build resilience and knowledge for vulnerable young people involved with or at risk of CSE. This includes personal development courses on understanding healthy and unhealthy relationships and social media risks.

#### **Buddy support as part of Youth In Mind Pilot**

As part of a wider health service initiative called Youth In Mind, the CCGs are now commissioning the Youth Service (via Creative Support) to deliver 'Buddy support' to support young people who have been assessed by the Child and Adolescent Mental Health Service (CAMHS) to have mental health issues.

Since the start of April 2017, Youth Workers have received on average 5 referrals, at any one point in time. Youth in Mind is part of the CCGs strategy to broaden support for young people with mental health issues within non medical/ specialist services. MYMUP online system is part of this offer, as well as WRAP (Wellness Recovery Action Plan) led by Barnardos and a volunteering programme lead by Yorkshire Mentoring Service.

Youth Workers act as Buddies to the young people, their role is to befriend them, support them using the Signs of Safety approach and navigate them to the various support opportunities available to them.

A joint Youth Service, CAMHS and Youth in Mind away day was held in March 2018 with staff and young people which reviewed the impact of the support offered by Youth Workers. In many cases young people reported that the support had made them feel less isolated, more connected with their community and safer. In addition, our work with CAMHS has helped to reduce some of the demand for specialist support whilst increasing access to local social support. Youth Workers have continued to access training through the CCG and partners and this has led to an increase in Youth Worker's knowledge and skills on issues such as; self harm and self care.

The Youth Service has worked with over 500 children on this work.

### **Total Referrals and interventions for CSE and Youth in mind**

Constituency	CSE	Youth in Mind	Total number (Each has minimum of 3 interventions)
East	30	108	138 x 3 = 414
West	26	80	106 x 3 = 318
South	32	126	158 x 3 = 474
Keighley	21	139	139 x 3 = 417
Shipley	15	100	100 x 3 = 300

Within the South area there are girls groups in Holme Wood and Great Horton that were set up in response to CSE. These groups are supporting vulnerable girls and provide personal development courses in 3 areas

- How to be involved and develop safe relationships
- How to stay safe on-line
- How to identify local support networks with their community

Within the South the excellent work of the Build a Girl project continues to grow and supports the work undertaken in the girls groups in the West. This project provides 1-1 work as well as intensive work with families. The work recognises the value of how girls can be a positive influence with peers. An example of this is the links with the Bread and Roses Café in the city. This café is run through voluntary services and girls who have successfully overcome challenges and have received support attend the café and share experience with girls who remain vulnerable. The café provides a voice to influence others in a positive way.

Across Bradford there are 2 groups that provide support networks to boys around transgender and sexuality. These groups – Phoenix and Sound are not specific to CSE but address wider issues of vulnerability.

**GW Theatre Company (Para 2.46).** Over 4 years the company has delivered several distinct programmes of creative CSE prevention work to in primary and secondary schools in Bradford, working closely with all key agencies and in particular schools.

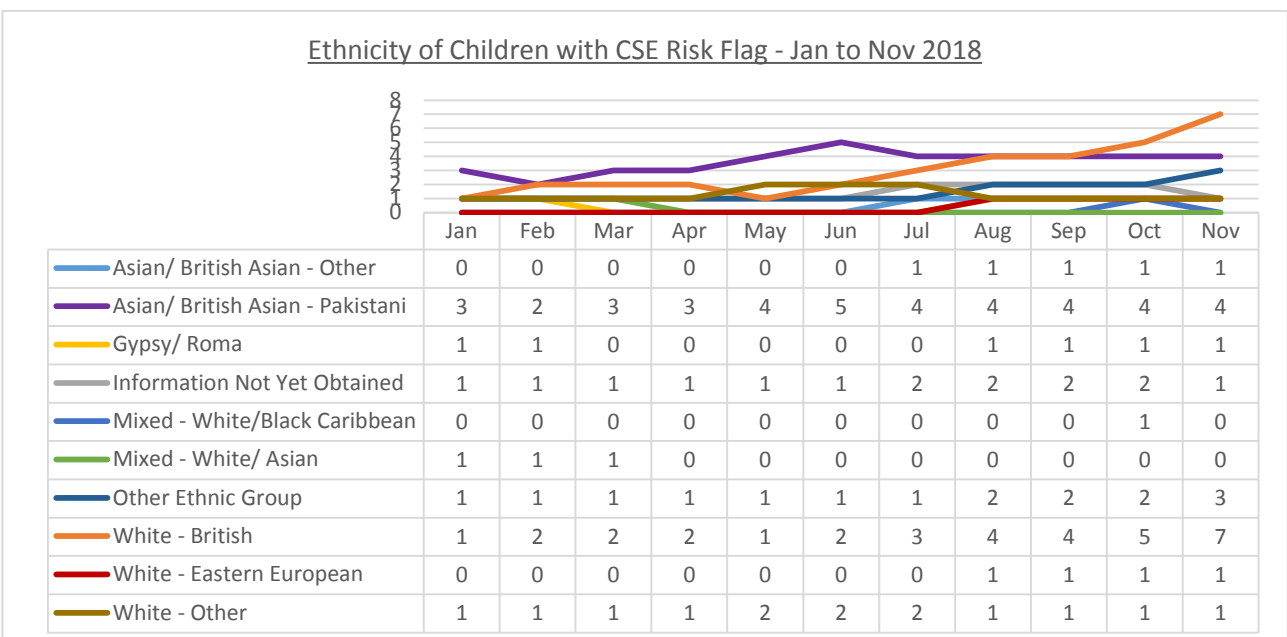
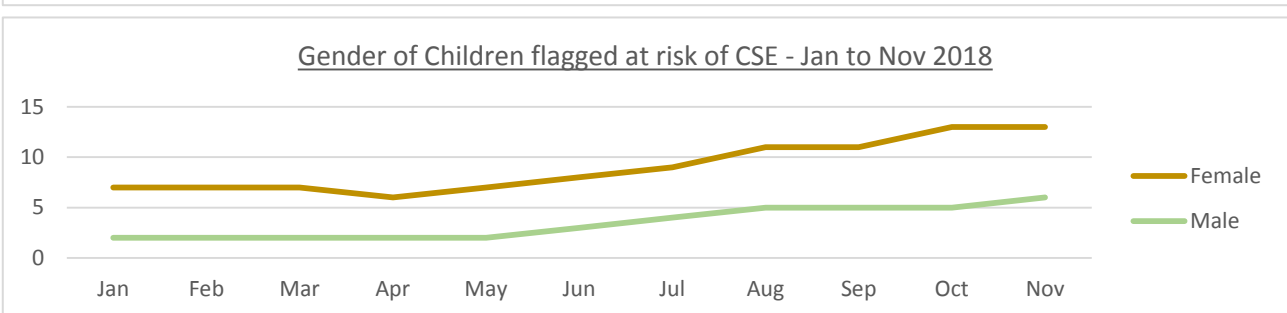
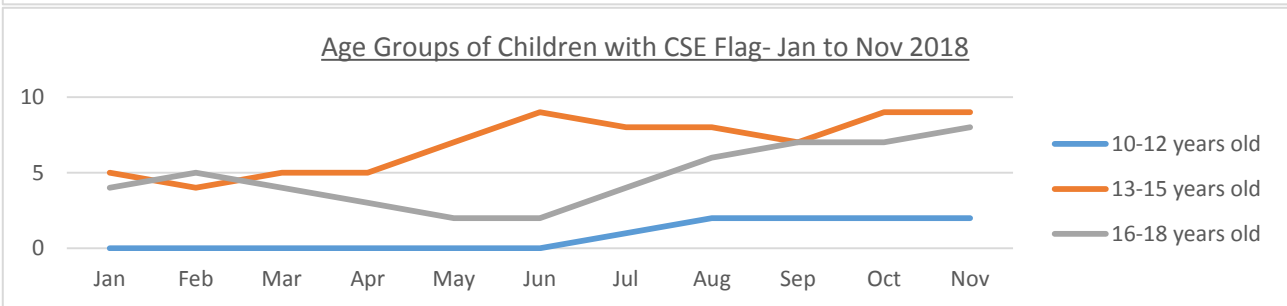
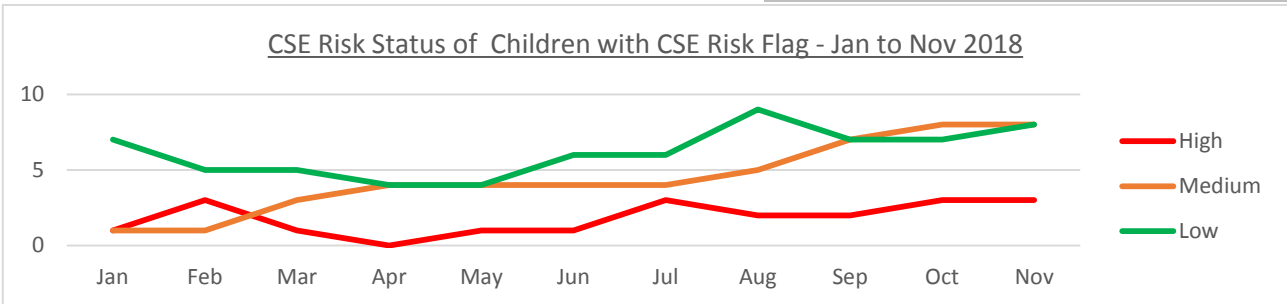
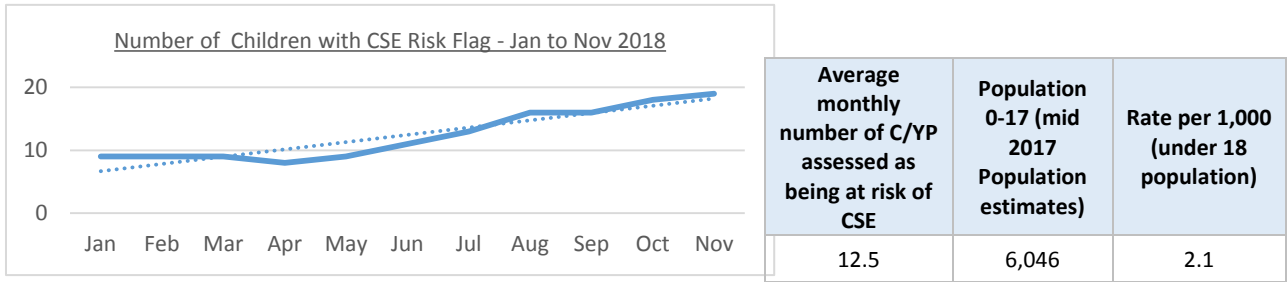
The following schools have received programmes from GW Theatre  
 St. Winifride's  
 St. Matthew's  
 Copthorne  
 Woodside  
 Russell Hall  
 St. Oswald's  
 Horton Grange

Lower Fields  
St. Stephen's  
Princeville  
Farfield  
Southmere  
Wibsey  
Carrwood

## Bradford South Constituency

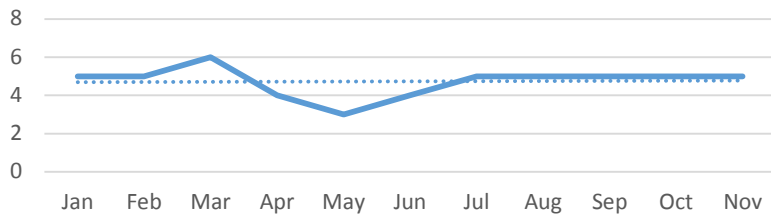
The following data is taken from information recorded on Children's Social Care Systems regarding children and young people flagged as being at risk of CSE.

### Great Horton Ward



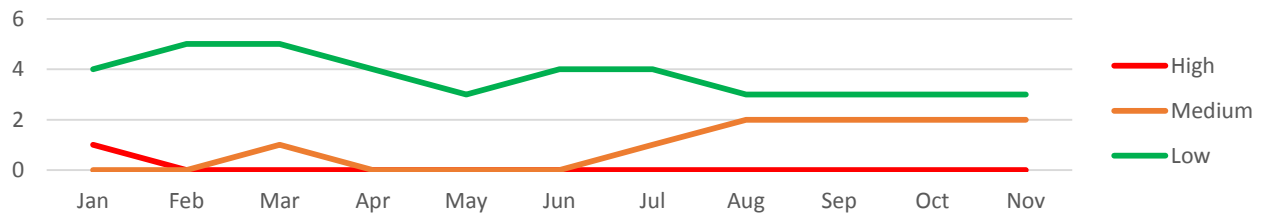
## Queensbury Ward

Number of Children with CSE Risk Flag - Jan - Nov 2018

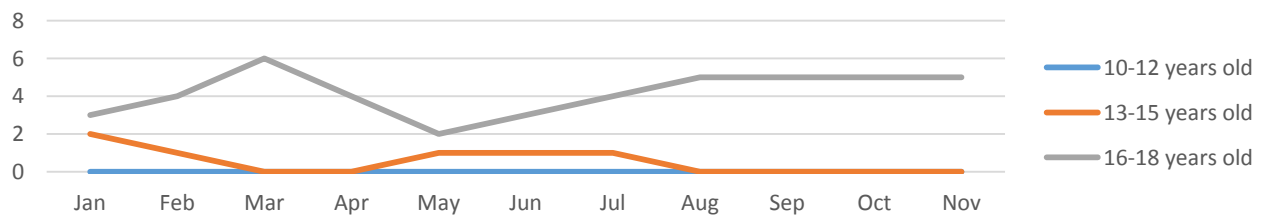


Average monthly number of C/YP assessed as being at risk of CSE	Population 0-17 (mid 2017 Population estimates)	Rate per 1,000 (under 18 population)
4.7	3,973	1.2

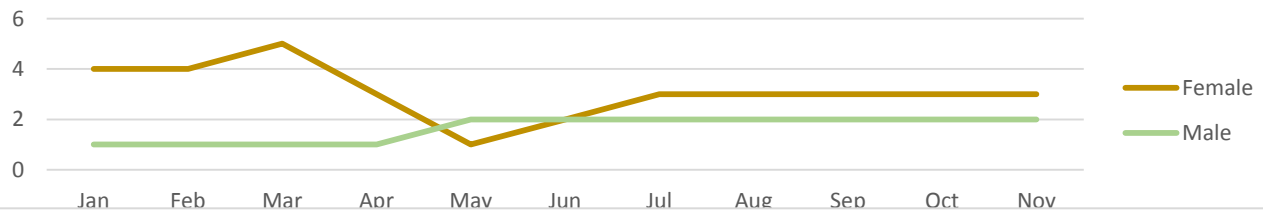
CSE Risk Status of Children with CSE Risk Flag - Jan to Nov 2018



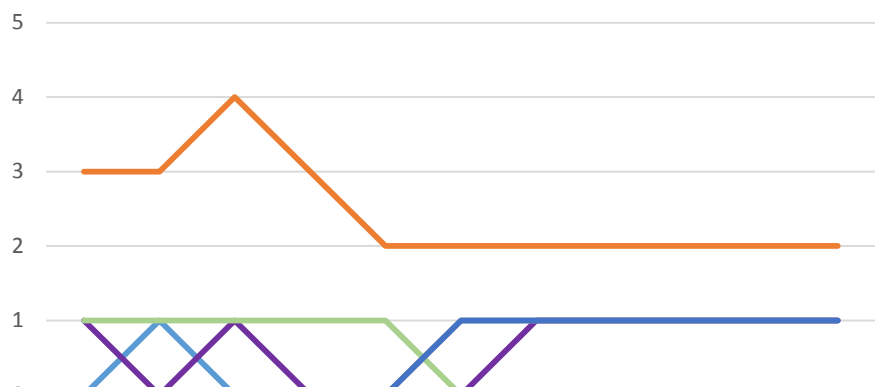
Age Groups of Children with CSE Flag- Jan to Nov 2018



Gender of Children flagged at risk of CSE - Jan to Nov 2018

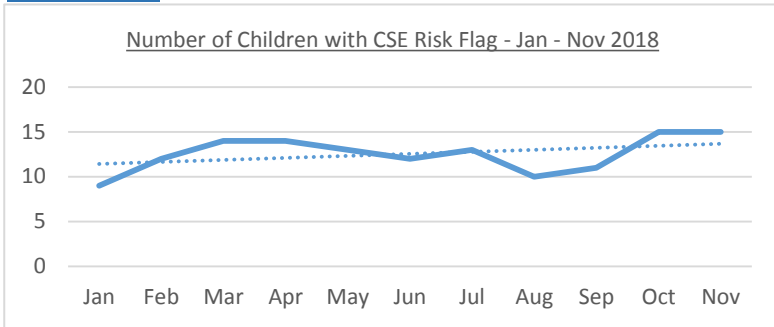


Ethnicity of Children with CSE Risk Flag - Jan to Nov 2018

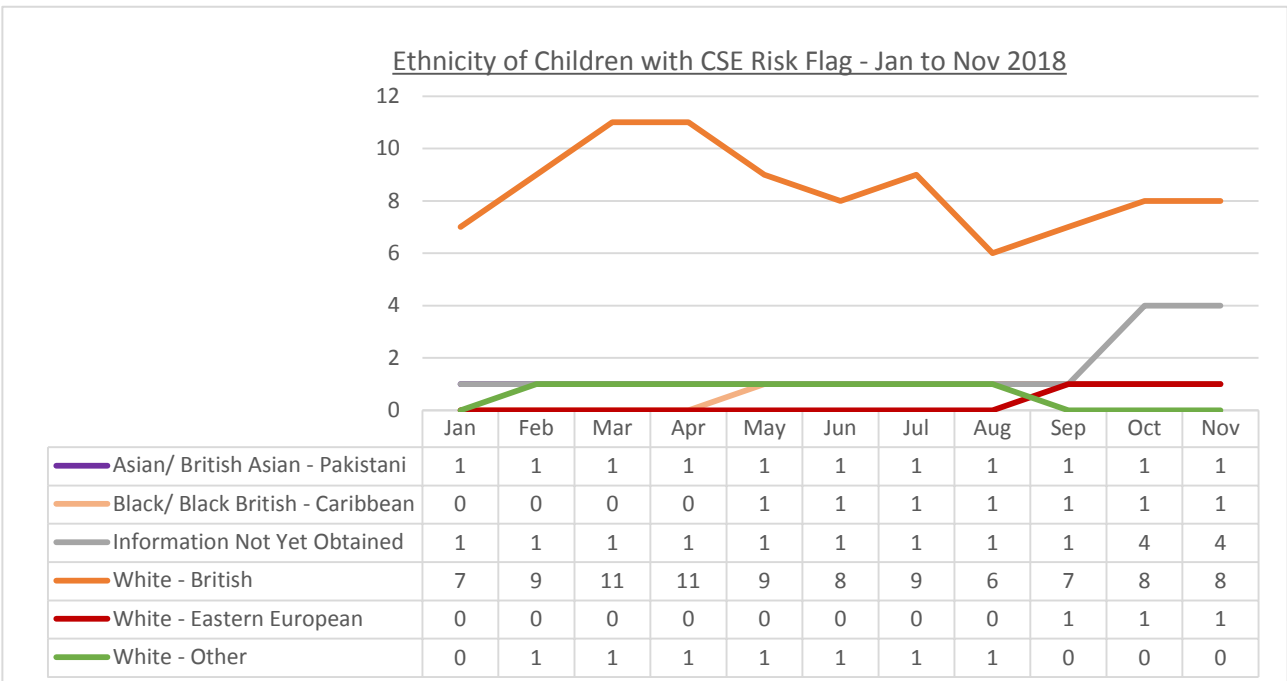
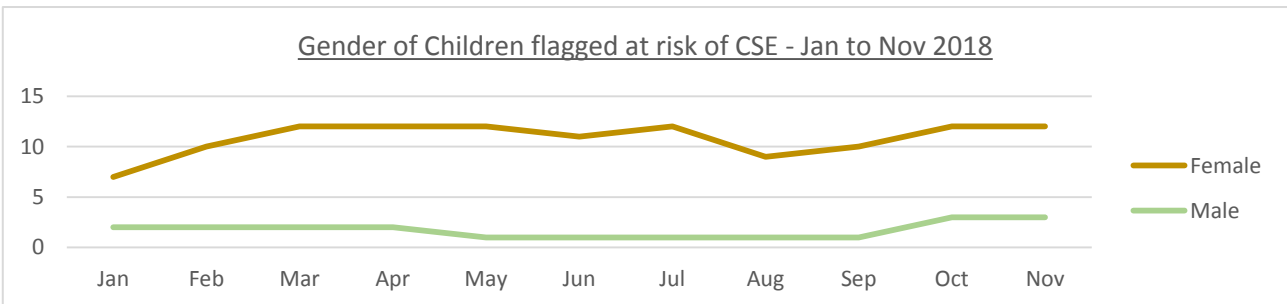
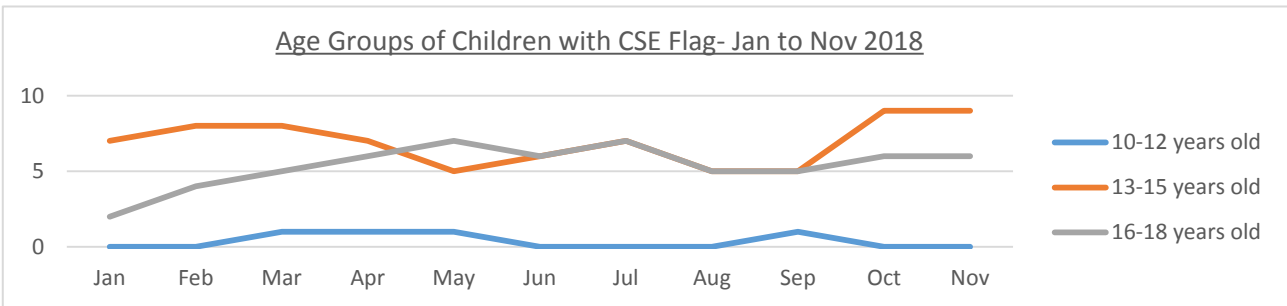
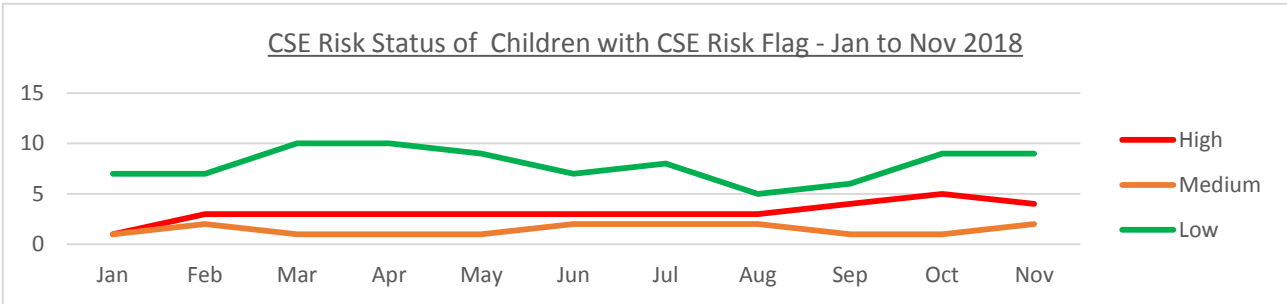


	Jan	Feb	Mar	Apr	May	Jun	Jul	Aug	Sep	Oct	Nov
Asian/ British Asian - Other	0	1	0	0	0	0	0	0	0	0	0
Asian/ British Asian - Pakistani	1	0	1	0	0	0	1	1	1	1	1
Black/ Black British - Caribbean	1	1	1	1	1	0	0	0	0	0	0
Information Not Yet Obtained	0	0	0	0	0	1	1	1	1	1	1
Mixed - White/ Black Caribbean	0	0	0	0	0	1	1	1	1	1	1
White - British	3	3	4	3	2	2	2	2	2	2	2

## Royds Ward



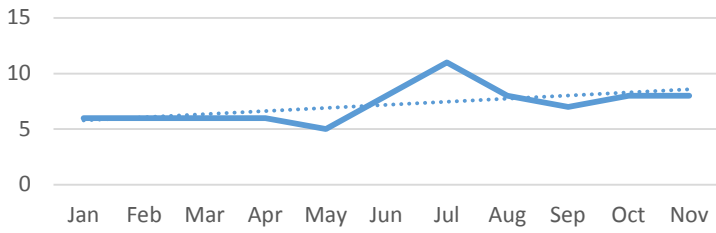
Average monthly number of C/YP assessed as being at risk of CSE	Population 0-17 (mid 2017 Population estimates)	Rate per 1,000 (under 18 population)
12.5	4,944	2.5





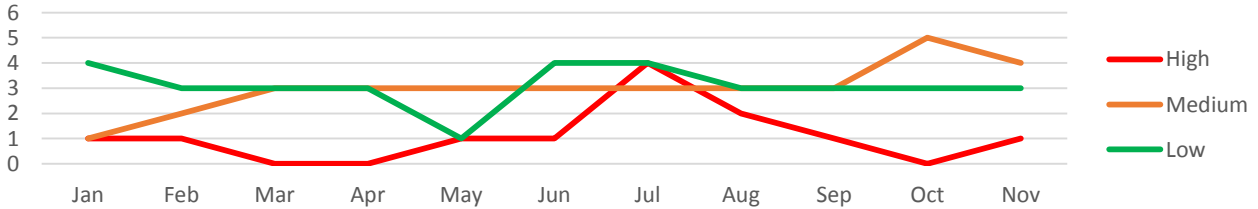
## Wibsey Ward

Number of Children with CSE Risk Flag - Jan to Nov 2018

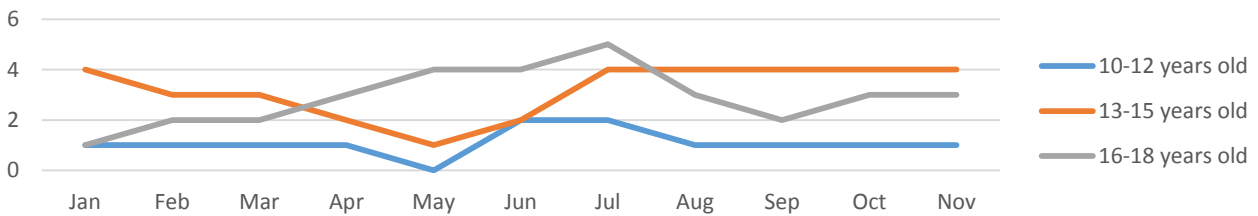


Average monthly number of C/YP assessed as being at risk of CSE	Population 0-17 (mid 2017 Population estimates)	Rate per 1,000 (under 18 population)
7.2	3,970	1.8

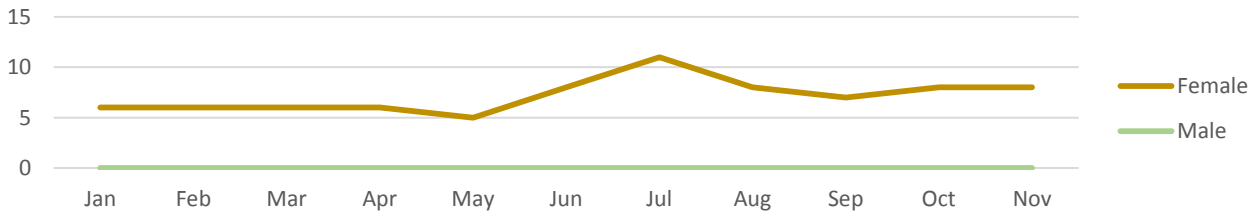
CSE Risk Status of Children with CSE Risk Flag - Jan to Nov 2018



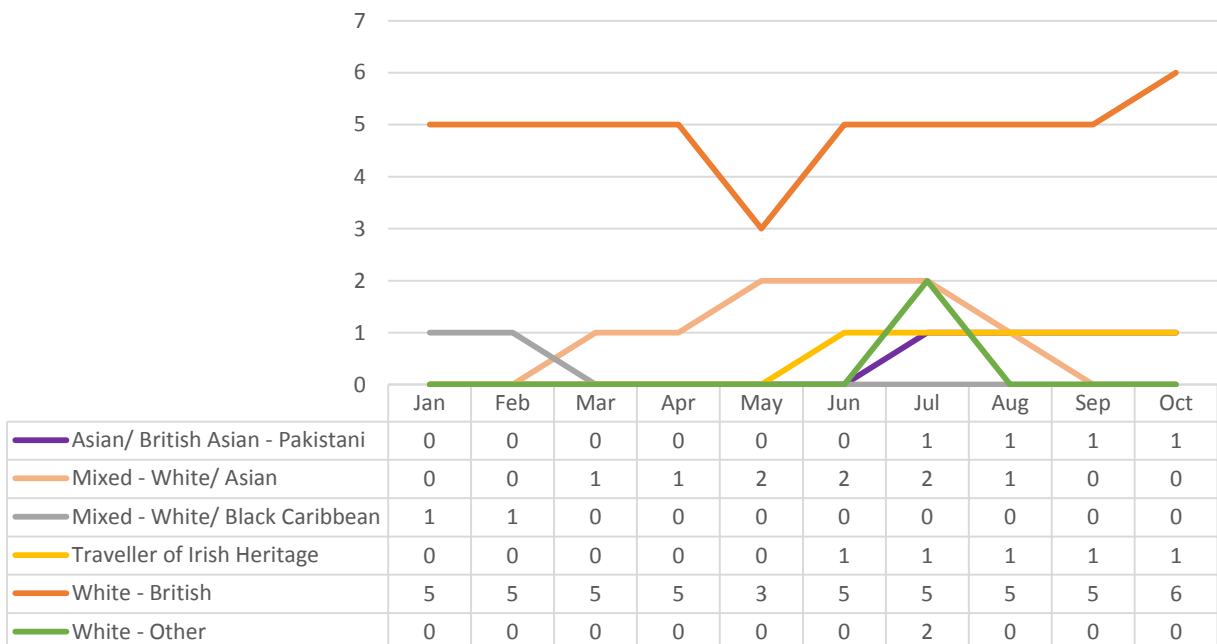
Age Groups of Children with CSE Flag- Jan to Nov 2018



Gender of Children flagged at risk of CSE - Jan to Nov 2018

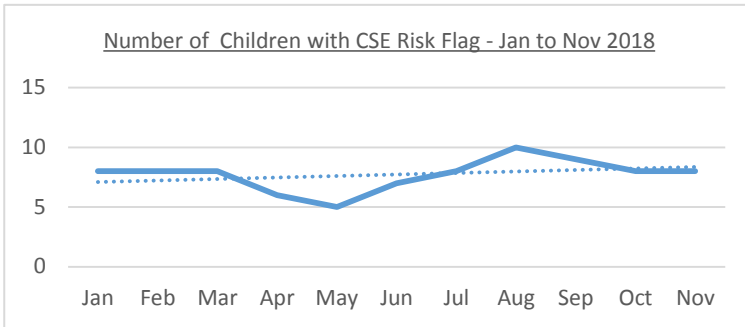


Ethnicity of Children with CSE Risk Flag - Jan to Nov 2018





## Wyke Ward



Average monthly number of C/YP assessed as being at risk of CSE	Population 0-17 (mid 2017 Population estimates)	Rate per 1,000 (under 18 population)
7.7	3,385	2.3

