

Report of the Strategic Director – Place to the meeting of Regeneration and Environment Overview and Scrutiny Committee to be held on 20th November 2018.

Subject: West Yorkshire Combined Authority and Leeds City Region Enterprise Partnership (LEP) Update 2018

Summary statement:

This report provides a general update on the Combined Authority and Leeds City Region LEP as a background for Committee discussion and question and answer session with Senior Councillors and Officers. The report includes details on shared ambitions, regeneration, transport, housing and partnership working.

Steve Hartley
Strategic Director - Place

Portfolio:
Leader / Regeneration

Report Contact: Philip Witcherley
Phone: (01274) 431241
E-mail: Philip.witcherley@bradford.gov.uk

Overview & Scrutiny Area: Regeneration and Environment / Corporate

1. SUMMARY

- This report provides an update on West Yorkshire Combined Authority and Leeds City Region Local Enterprise Partnership (LEP). The Regeneration and Environment O&S Committee will be joined by the Chair and Deputy Chair of Corporate O&S and Bradford Councillors who attend the Combined Authority O&S Committee. Senior Members and Officers will be present to discuss Bradford's current involvement, influence, investment and impact through the partnership with the Combined Authority and the LEP. The partnership and joint working exists to support prosperity, economic regeneration and inclusive growth across the City Region.
- This report provides a broad overview and highlights of partnership working with and investment through the Combined Authority and the LEP. This report aims to provide an overview of the Combined Authority/LEP and key issues for member consideration. It does not set out to be a fully comprehensive review.
- Appendix 1 provides a glossary of key terms and acronyms used in the report. Appendix 5a provides an initial District headlines summary for new members of the Committee.

2. BACKGROUND

2.1 Bradford Council is a funding and founding constituent council of the Combined Authority. Senior Councillors are directly involved in its governance, leadership and steering its operations. Cllr Susan Hinchcliffe, Leader – Bradford Council remains the Chair of the Combined Authority for 2018-19.

2.2 Appendix 2 sets out a brief overview of the Combined Authority/LEP (Appendix 2a), the current Governance Structure (Appendix 2b) and the direct involvement of Bradford Council Elected Members in the key boards and panels (Appendix 2c). In addition, the Chief Executive and Strategic Director – Place are directly involved in senior officer meetings and collaboration with the Combined Authority Senior Management. Lead officers are connected to operational, strategy, delivery and communications work. The Chief Executive is also the lead CX for the city region for Digital matters and framework, Trade and Investment and Business Innovation and Inclusive Growth.

2.3 The last update report taken in 2017-18 (10th October 2017) had the following recommendations – with a brief update for members included below

That a progress report be presented to a further joint meeting in 12 months time which also focuses on funded projects in the Bradford district .	Added to the O&S Work Programme for Oct 2018 Details on funded projects – with a focus on Growth Deal included in this report.
That elected members from Bradford who sit on the the Combined Authority Overview and Scrutiny Committee and the Combined Authority Transport Committee be requested to attend the relevant Bradford Council Overview and Scrutiny. Committees to provide feedback on their work.	Added to the Bradford O&S Work Programme for 2018-19. Addressed through Scrutiny team.

That the fact that “officers are working to develop a long term strategy for the district” in relation to greenhouse gas emissions be welcomed.	No further action required by the O&S Committee. LCR Energy Strategy and Clean Growth investment part of work programme of the Combined Authority/LEP. Linked to District climate change response.
That the Combined Authority be requested to develop a process to involve Bradford Ward Members in the specification and delivery of projects.	The Combined Authority in dialogue with CBMDC Lead Officers about member involvement and information provision. Bradford District ward & area information – through elected members – and wider policy direction taken into account in schemes, bids, delivery, monitoring and evaluation. Ward and O&S members have been involved in specific projects including Harrogate Road/New Line, Hard Ings, Keighley and Canal Road. New Bolton Woods housing has also seen direct involvement with WYCA support.
That the Combined Authority be requested to include a description of the community benefit, where possible, on the Growth Deal Dashboard	Outcomes/benefits included in key record keeping and reporting - to be sourced from new the Combined Authority/LA Portfolio Information Management System PIMS. Reports including Outputs and Benefits will be available for Q3 2018-19 onwards as the PIMS system is finalised. Business cases now use Five cases model to include the management, financial, commercial, economic and strategic cases – building in community benefit alongside operational and technical matters.
That the Combined Authority schemes and objectives are, where possible, aligned with the priorities of Bradford Council to achieve the best outcome for raising skills and delivering integrated transport schemes.	On-going partnership working maintains attention on District priorities and ambitions. Northern Powerhouse Rail and transformational connectivity is a significant example of joint prioritisation, lobbying and investment planning.

2.4 The Combined Authority Business Plan 2018-19 was adopted at this year’s Annual Meeting. It sets out the long-term priorities to address three key challenges by:

- developing a productive economy that recaptures the spirit of enterprise and innovation that first shaped our region
- building a modern, accessible transport network that supports prosperity, job creation and quality of life
- critically, enabling inclusive growth that works for everyone

2.5 Over the past 18 months the Combined Authority have restructured the organisation, placing a firm emphasis on transparency, accountability and delivery focused on results and value for money. There are further improvements underway this year to ensure the organisation is fully “mayor ready” when the time comes. the Combined Authority are also saving money by transforming our shared approach to public transport services, and developing policy across partnership of councils that promotes economic success focused on enabling the widest range of people and places to benefit from this prosperity. The Leeds City Region spans 10 local authority areas: Barnsley, Bradford, Calderdale, Craven, Harrogate, Kirklees, Leeds, Selby, Wakefield and York. Leeds City Region local authorities- the above 10 areas plus North Yorkshire County Council- have been at the forefront of partnership working since 2004, building robust, transparent and accountable governance for over a decade. The LEP was established in 2011 and the Combined Authority in 2014.

2.6 Since 2011, government has increasingly offered Local Enterprise Partnerships control over budgets in a number of key aspects of economic development. The original WY+TF report went to Executive & Full Council in March 2013.

2.7 See also Section 4. Financial and Resource appraisal. The Combined Authority as the formal collaborative organisation was mandated by Government for Growth Deal funding release and as accountable body for spend. It has full legal status. Schemes and investment from Growth Deal 1,2 &3, WY+TF – transformative transport and regeneration investment. Scheme approvals and progress is set out in Appendix 5.

2.8 The collaboration with the Combined Authority helps progress critical projects that underpin the District Plan and priority outcomes. District priorities illustrates how the sub-regional work supports and delivers on District ambitions and priorities, including:

- Northern Powerhouse Rail – routing and station prioritisation for Bradford within and across the North of England
- Business support through LEP – reported through REOS – through which small and medium size firms – the backbone of the local economy – can receive targeted funds and support.
- Inward investment and trade especially through LEP – reported through REOS
- Place-marketing – promoting Bradford District in the wider City-Region and to the world
- The SEP contains headline initiatives that represent ‘the large scale ‘game changers’ that will be pivotal to achieving the City Region’s vision’. Under Priority 4: Infrastructure for Growth the headline initiatives include developing and regenerating integrated Spatial Priority Areas (SPAs) and prioritising investment in SPAs to maximise the City Region’s economic, housing and regeneration potential. Three categories of SPAs have been identified: Urban Growth Centres; Housing Growth Areas; and Employment Growth Areas. Bradford has a SPA in each of the three categories:
 - Bradford City Centre is identified as an Urban Growth Centre
 - Bradford-Shipley Canal Road Corridor is identified as a Housing Growth Area
 - Gain Lane, Parry Lane & Staithgate Lane form part of the pan city region M62 Enterprise Zone which is identified as an Employment Growth Area
- The Transforming Cities Fund Bid prioritises the corridors for Leeds to Bradford, Halifax and the Calder Valley and Bradford to South Bradford & North Kirklees as

well as Bradford priority gateways (Interchange and Forster Square)

2.8 Appendix 4a also includes an overview of the main Combined Authority/LEP meetings since the last Joint O&S report in 2017.

2.9 Appendix 4b provides an overview of the Combined Authority O&S meetings and work programme since over the last year. The most recent meeting took place on the 16th November and covered the minutes of 14 September 2018 meeting; O&S Governance arrangements; Chair's Update; Combined Authority Scrutiny Work Programme; Flood Review ; The Combined Authority's Engagement with the Public and latest position on Devolution.

2.10 Appendix 5 provides an overview of Investment & Schemes - Delivery, performance and Outputs/Benefits with more detail on significant Bradford schemes – as requested at last year's Joint O&S and on other funds helping to deliver the District and Council Priority Outcomes.

2.11 There are a number of other strands of work being progress through the city region including:

- ❖ Local Inclusive Industrial Strategy (LIIS) – given the Government's progress and investment plans for the National Industrial strategy and it's expectation that 'local industrial strategies' will be in place by April 2020, the Combined Authority and the LEP are working on plans for a Leeds City Region LIIS . A comprehensive background document is now available for consideration and comment - Appendix 6. This covers a wide range of issues and may require more detailed attention by the Committee. This reinforces and supports the District Economic Growth Strategy and delivery planning.
- ❖ Inclusive Growth –Measures to ensure the mainstreaming of inclusive growth have been embedded in the planning and design of the LIIS. This will also see shift towards greater expectations on business and social enterprises for addressing in-work poverty, routes to employment and other social and environmental responsibilities.
- ❖ Employment and Skills – the Leeds City Region employment and skills plan is being progressed alongside a review of the skills system. Recognising that the Leeds City Region faces a skills deficit and in order to respond to the challenge LEP is to undertake a review of the education and skills system. The primary focus of the review will be on the vocational and education and skills system but also considering the way the system interacts with other key policy areas. LEP discussed the brief for the review in September 2018 and outlined the roles of the Combined Authority, LEP Board and the Employment and Skills Panel in respect of input, challenge and sign-off of review outputs. This supports and reinforces current activity on the District Skills Plan and improvement. A career campaign aimed at young people has launched a new website. www.futuregoals.co.uk , launched by LEP will give guidance about future employment or training. Two ESIF bids have been successful and under contract the total value will be about £2.9million (50% ESIF, 50% match) for Bradford over three years with delivery starting from January 2019:
 - A 16-18 NEET contract that is across Bradford, Kirklees and Leeds. All 3 Local Authorities are partners in the bid but Bradford is the Lead.

- Routeways – which targets 19-24 year olds and progression into employment and is across the West Yorkshire and York area. The Combined Authority will be the contracting body, but the model is that each Council is responsible for delivery in their own area.
- ❖ LCR Digital Framework and infrastructure – The Digital Framework consultation has now closed. It is expected that the principles and approach to accelerating the city region's digital agenda will move forward for approval in Winter 2018. An action plan is being created and this complements existing investment on digital skills, digital infrastructure, super fast broadband and more.
- ❖ Energy Strategy and Delivery Plan – The Energy Strategy and Delivery Plan aims to help the City Region meet its long term ambition to become a zero carbon economy by 2036. It also aims to maximise the economic opportunities clean growth can provide. A regional carbon reduction target is also being explored. Further stakeholder engagement on this will follow shortly. The Green Economy Panel recently endorsed the Strategy, Delivery Plan and exploring a city region carbon reduction target. It is expected that these will now move forward for approval in Winter 2018.
- ❖ Green and Blue Infrastructure Strategy and Delivery Plan - This provides a clear vision, aims, priorities and a delivery plan to ensure everyone in the City Region is within easy reach of an outstanding network of green infrastructure that reduces flood risks and supports health, the economy and a superb quality of life. The Green Economy Panel recently endorsed the Strategy and Delivery Plan. It is expected that they will move forward for approval in Winter 2018.
- ❖ Transport Strategy and Services
 - Transport Strategy and Bus Strategy – progressing to support the Strategic Economic Plan and inclusive economic growth with development work over the next 2-3 years to:
 - Transform the public transport offer in some of the most deprived communities in the LCR, befitting a growing young population
 - Support the delivery of inclusive growth ambitions, to rebalance the economy and address the key transport facing our region
 - Create 'healthy streets', which put people and their health at the heart of improving transport and encourage physical activity by enabling more and safer walking & cycling
 - Reduce harmful emissions – air quality, carbon, noise
 - Emerging concepts include
 - Dynamic Transport: A 'passenger service innovation fund' for West Yorkshire to implement demand responsive transport solutions by 2022 - this is supported by keybus operators.
 - Mobility As A Service: A single 'all mode' ticketing and information app for the region. For bus, rail cycling and car clubs, this would integrate all transport ticketing, journey planning and payment options for the region.
 - Total Transport: A 'Door to Door digital transport hub', operating across the region to help ensure that existing spare capacity in public transport services is best matched to currently unmet trip requests.
 - Research and Development: Work with leading research institutions, such as the University of Leeds Virtuocity programme, to look at the impact of autonomous vehicles on our city centres.

- E-Bike Transformation at our Gateways: Delivery of a programme of urban realm infrastructure improvements, including docking stations for a first phase of E-bikes initially focused at each gateway
- the most recent report from the Combined Authority was presented to the 29th October Bradford Consultation Sub Committee this covered
 - Transforming Cities Fund; Performance of Northern / TransPennine Express rail services; Open Data; Clean Bus Technology Fund; Department for Transport Inclusive Transport Strategy; Changes to Blue Badge Eligibility; Audio Visual Information; Compensation for Rail Passengers; Rail Industry Reviews Following the Timetable Crisis; Calder Valley Line Upgrade; Platform Extensions Programme; Shipley By-pass feasibility study; Bus Service Policy - Guidelines on the Provision of Local Bus Services; Future of Bus 18; Real Time Displays; Pickup and drop off – Bradford Interchange; Bus station toilet refurbishment – Bradford Interchange; Bus Service Changes; Christmas Bus and Rail Services; City Connect
 - Engagement & Yourvoice: Digital Engagement Hub Bradford – Shipley Corridor - late 2018 / early 2019 engagement planned
 - Bradford Corridor Improvement Programmes - January 2019 engagement planned

3. OTHER CONSIDERATIONS

3.1 The Urban Transport Group network brings together Greater Manchester, Liverpool City Region, London, Tyne and Wear, Sheffield City Region, West Midlands and West Yorkshire. Nottingham City Council, Strathclyde Partnership for Transport, Tees Valley and West of England Combined Authorities are associate members.

3.2 HM Government Rail Review – Ben Still (Managing Director of West Yorkshire Combined Authority), who leads on rail for the Urban Transport Group, states that there is a strong case that for better urban and regional rail services then more responsibilities for more rail services need to be transferred to devolved authorities. As has been seen in Merseyside, Scotland and on London Overground full devolution works because it brings control over rail services closer to the passengers and places that rely on those services. As a result there has been more investment, higher passenger satisfaction and better performance. Similar arguments are being progressed for bus services.

3.3 The Combined Authority submitted evidence to the Autumn Budget 2018 and is gearing up to influence and lobby ahead of the Spending Review 2019.

3.4 Councils and the Combined Authority remain in active negotiations with Government over Devolution and the most recent material for the One Yorkshire proposal was sent to the Secretary of State on 12th October 2018.

3.5 LGA has opened membership to Combined Authority areas and Mayoral Combined Authorities and there is a LGA Combined Authorities Chief Executives network. City & City Region Mayors met with Core City Leaders for the first time in October 2018.

3.6 The LEP Network UK consists of the current 38 LEPS and supports policy development and mutual support across the LEPs and their relationship with Government.

3.5

3.6 The National Infrastructure Commission NIC (NIC) and its chair Sir John Armitt have produced the National Infrastructure Assessment and are now seeking to work with cities to progress investment and infrastructure planning at pace and scale. Developing the relationship with the NIC is crucial for supporting the calls, evidence base and activities for the best type, quality and resources for investment fit for the 21st century, including NPR. The Commission visited Bradford on the 8th November.

4. FINANCIAL & RESOURCE APPRAISAL

4.1 For the Financial Year 2018-19 Bradford will contribute an £23.50m to the Combined Authority and LEP and while mostly this directly supports the passenger transport services it also contributes to the organisation, political leadership, governance, operations and investment in the Combined Authority's activities in the Region. Services the Combined Authority provide are part-funded by a 'levy' on the West Yorkshire Councils, while other capital funding comes from the Department for Transport (via Local Transport Plan - LTP - funding), the European Union, and from public and private sector match funding

4.2 An aggregate £101m pa Transport Levy is paid by the five West Yorkshire district authorities to support the activities of the Combined Authority. At its meeting in February 2018, the Combined Authority resolved to reduce the levy by £1m in 2018/19 with further reductions in future years.

4.3 Reduced revenue funding has meant that the Combined Authority is responding through a detailed review of key expenditure lines within its revenue budget with a Member-led Budget working group overseeing the process. A budget and business planning timetable is in place to keep 2018-19 costs under control and prepare for the 2019-20 Combined Authority budget and business plan. This is part of an ongoing dialogue to ensure alignment not just with the Council's budget planning but also that of the other WY Local Authorities..

4.3 The table below provides an indicative summary of the sub-regional investment into Bradford District with the share of local passenger services investment - cost proportionate to the contribution (about 23% of all region) and based on local population size.

Sept 2018 Update

Regional Investment into Bradford (LEP & Partners)	2017-18	2018-19	2019-20	2020-21
	£	£	£	£
Growing Business	0.10	0.00	0.00	0.00
WYTF	2.46	5.80	20.25	27.02
Housing & Regeneration	0.20	0.30	0.50	4.30
Skilled and Flexible workforce	0.08	0.0	0.0	0.0
TOTAL BRADFORD DISTRICT	2.84	6.10	20.75	31.32

REGIONAL INVESTMENT			
Bradford benefits from Levy through bus subsidies (on routes, to individuals) and infrastructure maintenance (stations, bus stops etc) and also SME grants, European funding, Business Rates Pool which all come via LEP/WYCA.			
BRADFORD CONTRIBUTIONS to the Combined Authority for regional activity - projection	-23.84	-23.50	-23.00
		-22.50	

- 4.4 The multi-year profile illustrates the significant investment in infrastructure and schemes that is being driven through Bradford share of Growth Deal funding. This is subject to agreement and regular monitoring with Central Government. There is also a full five year Gateway Review to assess the total impact of these funds across the City Region.
- 4.5 There are other funds like the Growing Places Fund and Revolving Investment Fund that offer market returnable loans. These are primarily used to unlock commercial developments and more details have been provided to the Combined Authority O&S.
- 4.6 Business Rate Pool projects are outlined Appendix 5 and are supported by the Combined Authority with the arrangements being a Local Authority city-region agreement to share and maximise the impact from pooled funding.
- 4.6 The West Yorkshire Combined Authority has called for greater local control over funding to rebalance the economy after the UK leaves the European Union next year. The Combined Authority has agreed a series of principles that the new UK Shared Prosperity Fund, which the Government has committed to creating with money repatriated from the EU, should follow if major northern regions like Leeds City Region are to play their full part in driving UK prosperity after Brexit. This includes ensuring that the value of UK Shared Prosperity Funding available to local areas at least matches existing EU and domestic funding levels. In Leeds City Region this would equate to a Shared Prosperity Fund allocation of at least £200million a year to sustain current levels of investment and support the region's growth ambitions. The Combined Authority also called on Government to seize the opportunity of putting in place a radical new approach to how local growth funding is allocated – placing control of funding decisions in local hands and creating a single funding pot to ensure that investment is properly targeted to local needs. UK Shared Prosperity Fund is seen to need to take long-term approach, operating over a 7-10 year period as a minimum to ensure that funding is sustainable and focuses on ingrained barriers to productivity and better living standards.
- 4.7 Further negotiations continue with central government about devolution, powers and resources and the One Yorkshire submission was recently submitted to the Minster and is awaiting a response. The most recent update on devolution was presented to CA O&S on the 16th November 2018.

5. RISK MANAGEMENT AND GOVERNANCE ISSUES

5.1 Effective working with and through the Combined Authority/LEP is essential for cross-boundary, sub-regional and sub-national powers, resources and delivery in support of the District's priority outcomes and longer term ambitions. Within the Combined Authority & LEP there is an agreed Assurance Framework, developed to Central Government rules and guidance and this alongside established programme and financial management provides confidence in the risk management of the major funding streams. As schemes have progressed from initial proposal through to fully costed business cases on-going refinement and change controls are in place. This then means that the overall programming, reporting and accounting needs to be continually reviewed and improved for this multi-million pound and complex portfolio of investment across the city-region. Given the nature of this public finance this report is based on existing scheme details and the indicative allocations for spend and delivery.

5.2 A number of governance changes to the Combined Authority & LEP Governance were confirmed at the Annual Meeting in Summer 2018. The Combined Authority at its annual meeting appointed the following advisory committees of the Combined Authority for the municipal year 2018-19, which also report to the LEP:

- Business Innovation and Growth Panel
- Employment and Skills Panel
- Green Economy Panel
- Inclusive Growth and Public Policy Panel
- Place Panel.

The Business Investment Panel is an advisory sub-committee appointed by the West Yorkshire and York Investment Committee, to advise the committee and the LEP.

5.3 The Leader, Portfolio Holder (Regeneration, Planning and Transport) and Portfolio Holder (Healthy People and Places) are directly involved in key arenas of the Combined Authority/LEP and there are other key appointments and nominations from CBMDC elected members.

5.4 Government issued a call for LEP to respond to follow-up on a national LEP Review. A review of LEPs was announced in the Industrial Strategy White Paper in November 2017 and its findings published in July 2018. The LEP Board considered this at its 20th September meeting, after debate the Board supported the recommendations and agreed that to retain the status quo was not an option at the present time. It was considered important to put forward a strong proposal that complies with the Government's requirements as a preferred option and to continue discussions with North Yorkshire regarding their concerns for the wider geography. It was however recognised that the Leeds City Region LEP did work well within its current geography and it was suggested that a caveat be included in the response to Government indicating a willingness to reconsider the geographical footprint if retaining the status quo become an option in the future. A CA O&S Working group has been established for the LEP Review and Cllr Pollard (C) and Cllr R Watson (L) from Bradford are involved.

5.5 The following recommendations were agreed unanimously, although North Yorkshire wished to note their preference towards a status quo option:

- (i) That the 'Strengthened Local Enterprise Partnerships', the culmination

of Government's LEP Review and its links with activity on local industrial strategies and the emerging UK Shared Prosperity Fund be noted.

(ii) That the City Region's position on matters of leadership, capacity, accountability and performance (as set out in Appendix 2 of the Strengthened Local Enterprise Partnerships report) be endorsed.

(iii) That the LEP Board agrees its preferred option on geography, as set out in paragraph 2.10 [*] of the LEP Board report, but with a caveat that the Leeds City Region LEP would wish to review the position if the rules in respect of overlapping geography change and delegates authority to the LEP Chair to respond to the Government by 28 September 2018.

[*] Discussions with partners point towards a preference for a merger to cover the West Yorkshire, North Yorkshire and York footprint, albeit with some points of culture and working practice to address together. This area of 3,992 sq miles covers a population of 3.1 million, where 93.8% of people who live in the area also work in the area, and the economy is worth £70.3 billion with a broad base of sector specialisms providing resilience. The rich diversity of places means that coastal, rural and urban areas can combine to be stronger together, more effectively deliver inclusive growth and be more influential with national and international partners.

(iv) That the LEP Board delegates authority to the LEP Chair to respond to Government, including on the full implementation plan for a new LEP by 31 October 2018.

5.6 Further developments on LEP geography, development and operations will be circulated to the Committee as soon as they become available.

5.7 As part of Northern Powerhouse developments, the northern LEPs have been brought together as the Northern Powerhouse (NP) 11, providing 'one voice' with Roger Marsh appointed as the Chair. NP11 will focus on a small number of areas where joint activity across the North can improve economic performance, working with and advising the Government on issues such as how to increase productivity and overcome regional disparities. The Group will meet monthly and the three main priority areas for activity would be supply chains (led by Leeds City Region), energy and growth hubs.

5.8 The Annual Conversation between the LEP and Central Government will take place in December 2018.

5.9 The Combined Authority/LEP brings wider contact and involvement in a number of external regional and national bodies including Transport for the North – these are noted in Appendix 1

5.10 The Combined Authority has refreshed its corporate risk management framework and this is addressed through its Senior Management and Senior Leadership Teams, through its O&S and Governance and Audit Committees as well as through the Combined Authority itself.

5.11 The Combined Authority/LEP governance and related risks is tracked and reported through CBMDC Annual Governance Statement and the corporate risk register as well as managed on a day-to-day basis through the Chief Executive and Strategic Director – Place.

5.12 The Combined Authority/LEP have undertaken and presented a Brexit Resilience and Opportunities Assessment. This seeks to manage some of the critical uncertainties and risks facing the economy and businesses across the City-region.

6. LEGAL APPRAISAL

None directly arising from this report.

7. OTHER IMPLICATIONS

7.1 EQUALITY & DIVERSITY

the Combined Authority is committed to promoting equality and values diversity, encouraging fairness with equal chances for all to work, learn and be free from any barriers, discrimination or victimisation. the Combined Authority is committed to ensuring that its customers and employees are treated equally and fairly, through pursuing two aims:

‘Ensuring that everyone in West Yorkshire has equal access to our services.

Managing diversity within our workforce to benefit employees and organisational performance.’

The Combined Authority quality objectives for 2016 -2020 are:

to review and further refine its approach to equality impact assessments.

While (1) is underway, the Combined Authority will ensure that equality impact assessments are carried out whenever a new strategy, policy, service, function or major project is being developed.

The Combined Authority is committed to developing and maintaining an inclusive and diverse workforce. We will provide all employees with opportunities to reach their full potential. Our culture will be one where all employees feel they are supported, respected and treated fairly

7.2 SUSTAINABILITY IMPLICATIONS

Working with the Local Authorities of West Yorkshire and Leeds City Region, as well as the wider business community and public sector supports Bradford Council influence, lobbying, invest and partner to address critical challenges and to deliver on the ambitions and priority outcomes for the District.

Sub-national decentralisation and devolution works to support prosperity, well-being and resilience. By working through and with sub-regional and sub-national arrangements, Bradford Council is seeking to ensure sound investment and positive change in the face of immediate and longer term challenges and opportunities

7.3 GREENHOUSE GAS EMISSIONS IMPACTS

The Combined Authority is working to ensure effective investment in the Green Economy. The most recent

Green Economy Panel – October 2018 provided public updates on a wide range of initiatives. Scheme design for transport, regeneration and infrastructure looks to manage and improve emissions impacts. This is an area for continued development for the Combined Authority in 2018-19. Emissions management and adaptation plans are also being progressed as part of the Combined Authority operational and facilities management. Climate change and GHG emissions management is also included in the

Assurance Framework in project and investment management This reflects the high priority placed on this in the SEP.

Officers are working to develop a long term strategy for the district and are collaborating with the Combined Authority to ensure the strategies are aligned even though they will be developed separately. Public ambitions are for compliance with the Paris Agreement to limit emissions to 1.5 degrees.

7.4 COMMUNITY SAFETY IMPLICATIONS

Public safety and security is a due consideration of the Combined Authority, especially in the design and operation of Transport Services

7.5 HUMAN RIGHTS ACT

None directly arising from this report.

7.6 TRADE UNION

There are no direct Trade Union implications arising from this report. Alignment of resources and staff on collaboration, programme management and delivery is core to the on-going relationship between the Council, the Combined Authority and neighbouring Local Authorities (LAs) and partners.

Should discussions lead to a transfer of staff to a new undertaking, then TUPE of course may apply and Trade Union involvement would take place as per standard practice. Equal pay issues may be a consideration across transferring entities if and when they are transferred, and preparations would be advised as early in the process as possible. The key skills and behaviours to achieve the Combined Authority's objectives and any predictions related to the transfer of functions should be rolled out through positive engagement and communication with staff currently employed, and across partner LAs and organisations.

7.7 WARD IMPLICATIONS

The Combined Authority/LEP provide support, services and investment across all the wards of West Yorkshire and the wider city-region.

Passenger transport issues are dealt with on a day-to-day basis but also are reviewed and supported through the Bradford District Consultation Sub-Committee which involves Bradford District elected members.

There are a number of live schemes and planned investments, including for Bradford City Centre (Bradford Interchange and Bradford Forster Square), Canal Road Corridor, South Bradford and Keighley. Ward member involvement in investment planning, scheme delivery and operations is recognised and valued by the Combined Authority

The day-to-day work of Metro and passenger services, including bus and rail covers the whole District. Communication and arrangements are in place to ensure effective provision across the District, for urban and rural communities and in the context of mobility and accessibility for West Yorkshire and wider connectivity. Transport matters are also addressed through the Bradford District Consultation Sub-Committee.

7.8 IMPLICATIONS FOR CORPORATE PARENTING

None arising from this report

7.9 ISSUES ARISING FROM PRIVACY IMPACT ASSESMENT

None arising from this report

8. NOT FOR PUBLICATION DOCUMENTS

None.

9. OPTIONS

This is a background report to support the Joint O&S discussion on the Combined Authority/LEP with lead members and senior officers.

Comments and views are welcomed on the emerging Local Inclusive Industrial Strategy document – Appendix 6.

The latest position on delivery and progress of the Bradford schemes will be raised in the meeting.

Overview and Scrutiny Chairs, Deputy Chairs & Overview and Scrutiny Members are asked to consider the key issues set out in the report and appendices.

Areas for attention or for consideration by the Leader and/or Executive are to be raised through the meeting.

10. RECOMMENDATIONS

It is recommended that

The involvement and partnership between Bradford Council and the West Yorkshire Combined Authority / Leeds City Region Enterprise Partnership (LEP) is welcomed.

The progress on investment and delivery is noted and progress on key schemes to be brought to the attention of the Committee as part of effective local scrutiny.

The on-going Strategic Economic Plan delivery and the development of the Local Inclusive Industrial Strategy and wider Policy Framework is recognised.

The scrutiny work of the Combined Authority O&S, especially on CA performance, the LEP Review and Transport, and Bradford Councillors involvement in this is noted.

11. APPENDICES

Appendix 1 - Glossary

Appendix 2 – a) The Combined Authority LEP Overview; b) the Combined Authority Governance Structure and c) Bradford Elected Members Involvement in the Combined Authority/LEP – Nominations and Appointments 2018-19

Appendix 3 – The Combined Authority Corporate Plan 2017-18 – extract
- highlights, 2018-19 key activities and KPIs – 2018-19

Appendix 4

4a The Combined Authority/LEP Key meetings Overview

4b The Combined Authority O&S Committee – Meetings & key agenda items 2017-18-19
(since last Bradford Joint O&S Committee received an update)

Appendix 5 – Investment & Schemes

Appendix 5a) Bradford District Headlines

Appendix 5b) Investment and Delivery Bradford Priority Schemes - Growth Deal financial dashboard – extract

5c) Growth Deal Financial Dashboard – Autumn 2018

5d) Growth Deal dashboard– Summer 2018

5e) WY+TF Pipeline– Summer 2018

5f) Other funds and investments

5f i) Business Rates Pool - 2018-19

5f ii) Support to Businesses – Overview of Total LCR Economic Services Grants Approved by District

Appendix 6 – Local Inclusive Industrial Strategy for Leeds City Region – Background Document.

12. BACKGROUND DOCUMENTS

- The Combined Authority Corporate Plan 2017-18, 2018-19
- LEP Strategic Economic Plan; emerging Local Inclusive Industrial Strategy & Policy Framework & LIIS Background Document
- Economic Reporting – Updates and Dashboards - covering the main local, national and international economic developments and included a dedicated commentary on the health of the Leeds City Region and wider economy as the UK moves towards its formal exit from the European Union.
- LCR Strategic Economic Plan 2016-2036
- LCR Assurance Framework & HM Government national Assurance Framework

template.

- LCR/the Combined Authority Single Appraisal Framework
- LCR Growth Deal Monitoring
- Board papers, the Combined Authority, LEP, WY&Y Investment Committee, Transport Committee etc e.g Brexit Resilience and Opportunities Assessment
- Compelling economic case for One Yorkshire devolution presented to Government , the Combined Authority Press Release, 12/10/2018
- LEP Network
- Urban Transport Group
- Transport for the North
- National Infrastructure Commission

Appendix 1 – Glossary of terms

APPG – All Party Parliamentary Group
BEIS – Department of Business, Energy and Industrial Strategy
C&LGU – Cities and Local Growth Unit (HM Government)
CBMDC – City of Bradford Metropolitan District Council
CFPS – Centre for Public Scrutiny
DCLG – Department for Communities and Local Government
DHEZ – Digital Health Enterprise Zone
ERDF - European Regional Development Fund
ESF - European Social Fund
ESIF European Structural Investment Fund
EAFRD - European Agricultural Fund for Rural Development
FDI – Foreign Direct Investment
GAC – Governance and Audit Committee
GD3 – Growth Deal 3 (LCR submitted to Government – August 2016)
GHG Greenhouse Gases
HS2 / HS3 – High Speed 2; High Speed 3
IER – Independent Economic Review (also SEC – Strategic Economic Case)
IS – Industrial Strategy
LAs – Local Authorities
LCR – Leeds City Region
LEP – Leeds City Region Enterprise Partnership
LIIS – Local Inclusive Industrial Strategy also Local Industrial Strategy LIS
LTP – Local Transport Plan
NEET – Not in Education, Employment or Training
NGT – Next Generation Transport (Leeds)
NIC – National Infrastructure Commission
NPIER - Northern Powerhouse Independent Economic Review – see IER
NPIF – Northern Powerhouse Investment Fund
NPR – Northern Powerhouse Rail (see also HS3)
O&S – Overview and Scrutiny
PIMS – Portfolio Information Management System
PMO – Portfolio Management Office
REOS – CBMDC Regeneration and Environment Overview & Scrutiny Committee
(formerly Regeneration and Economy)
SAF – Single Appraisal Framework
SEP – Strategic Economic Plan
SPAs – Spatial Priority Areas
SPF – Shared Prosperity Fund
STP – Strategic Transport Plan (TfN, the Combined Authority)
TfN – Transport for the North
TUPE – Transfer of Undertaking (Protection of Employment)
WYJS – West Yorkshire Joint Services

Appendix 2 – The Combined Authority/LEP Overview
With Governance Structure and Bradford Elected Members Involvement

Appendix 2a – The Combined Authority / LEP Overview

<p>The Combined Authority – formal local authority body</p> <p>The West Yorkshire Combined Authority is a local government body, established under statute, with a clear remit to support and drive forward regeneration, infrastructure and transport investment and to undertake key transport and development services</p>	<p>LEP – business partnership with political leaders supported by the Combined Authority</p> <p>Working closely with the private sector through the Leeds City Region Enterprise Partnership (LEP) to develop, shape and deliver policies that meet the needs of employers in the region</p>
<p>Transformative Vision:</p> <p>“To be a globally recognised economy where good growth delivers high levels of prosperity, jobs and quality of life for everyone.”</p> <p>Key challenges</p> <ul style="list-style-type: none"> • The productivity rate is not as high as it should be • The city-region economy still isn’t working for too many of our residents, and • Addressing the historic underinvestment in the transport network that has previously held back business growth and jobs 	
<p>West Yorkshire Combined Authority is a driving force for prosperity and economic growth across the Bradford, Calderdale, Kirklees, Leeds and Wakefield districts The City of York Council are involved as a member of the Combined Authority. The Combined Authority works with private and public sector partners to raise the quality of life in our region through businesses growth, job creation, a trained and skilled workforce and the building of new and affordable homes, underpinned by a modern, integrated transport network. The West Yorkshire Combined Authority is a collaboration between the West Yorkshire authorities and is the place where work that cuts across the whole of West The LEP and Combined Authority have a joint vision for economic growth in the City Region, which is, to create a globally recognised economy where good growth delivers high levels of prosperity, jobs & quality of life for everyone</p>	<p>The LEP aims to unlock the Leeds City Region’s vast economic potential by enabling businesses to grow and develop. The LEP works with partners across the public and private sectors with the goal of stimulating growth that will create jobs and prosperity for everyone who lives, works and does business here. Develops strategy and policy aimed at Page 2 3 Yorkshire and city region is undertaken. The CA is a governing board of nine political leaders, plus the chair of the Leeds City Region Enterprise Partnership (LEP) meeting both the current and the future needs of the city-region's economy. Undertakes specific project delivery that supports businesses and accelerate growth.</p>
<p>The Combined Authority and the LEP are supported by an officer organisation that undertakes overall policies and actions. In some cases Combined Authority officers do the work themselves and in other cases work is commissioned from local authority or wider partners. As part of this vision, the officer body’s mission is, to be “the driving force for delivering an outstanding economy with better connectivity and services for businesses, people and places, on behalf of the Combined Authority.”</p>	

The Leeds City Region Strategic Economic Plan SEP 2016-2036 was adopted and launched in spring 2016. This sets out key priorities and supports Bradford District priorities especially “Better skills, more good jobs and a growing economy”: The SEP demonstrates how the LEP/the Combined Authority and partners will create an extra 35,700 jobs for local people over the next 20 years, and grow the City Region economy at a faster rate than the national average. Central to the shared vision is good growth – ensuring that improved business productivity and profitability leads to a stronger economy and environment that everyone who lives and works in the City Region can benefit from. Work is being taken forward to align this more strongly with the ambitions of inclusive growth – ensuring prosperity benefits all across the city-region especially the most disadvantaged – and to demonstrate clear support to the Government’s Industrial Strategy and investment plans.

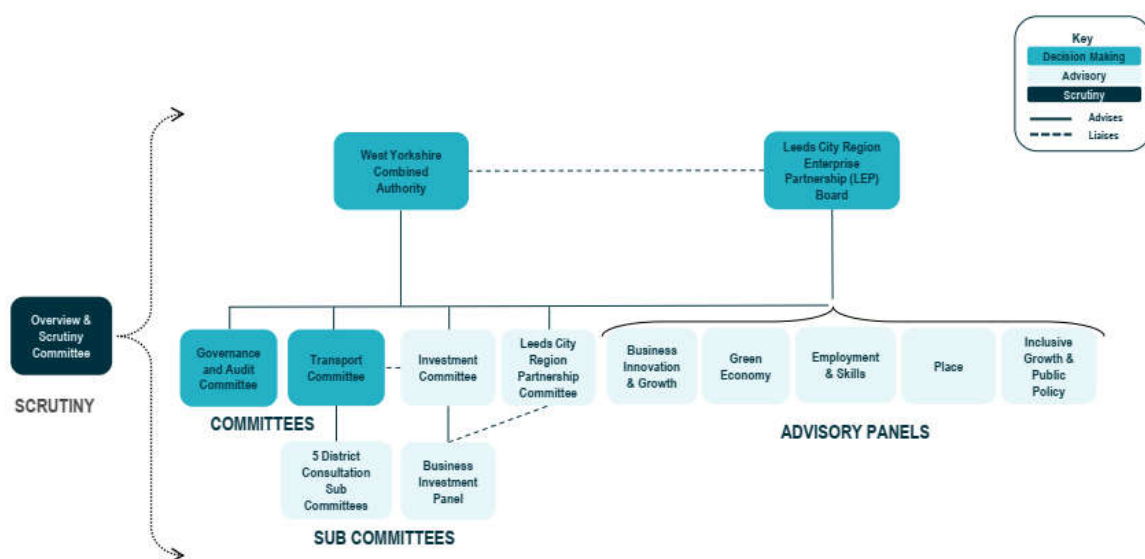
The Plan takes the next steps towards delivering the shared ambitions at a bigger scale and focusses on ten ‘big impact’ projects that will make a major difference to growth and jobs under four priorities :

- o Growing Business
- o Skilled People, Better jobs
- o Clean energy and environmental resilience
- o Infrastructure for Growth

A key ambition is to support Leeds City Region to become a net contributor to UK public finances and the wider economy, addressing local financial self-reliance for the public sector, investing in prosperity and well-being, as well as the response to central Government and local public fiscal consolidation.

Appendix 2b The Combined Authority Governance Structure – July 2018

Governance Structure



The Combined Authority officer team is organised into four directorates focusing on:

- Policy, Strategy and Communications – developing policies and strategies to transform the region, securing the investment to put those policies into action, and championing the region's interests nationally and internationally
- Delivery – overseeing our multi-million pound programme of capital investment in transport improvements and economic regeneration, ensuring the right projects are delivered on time and on budget, and that the greatest possible benefits are realised for the region
- Transport Services – providing high-quality, responsive services to connect people to jobs and other economic opportunities, and running our Metro-branded network of bus stations, travel centres and public transport information
- Economic Services – supporting businesses to grow, attracting new companies to invest in the region, and supporting skills development to help people progress and prosper and businesses become more productive

These four directorates are supported by a Resources directorate, which ensures that our organisation takes decisions in an open, transparent way, spends money wisely, and develops a high-performing team.

Appendix 2c - Bradford Elected Members Involvement in the Combined Authority/LEP – Nominations and Appointments 2018-19

West Yorkshire Combined Authority

Cllr Susan Hinchcliffe (Chair); Cllr Imran Khan – Substitute

Cllr John Pennington

LCR Partnership Panel – in abeyance

West Yorkshire Combined Authority Governance & Audit Committee

Cllr Susan Hinchcliffe (Chair); Cllr Imran Khan – Substitute

West Yorkshire Combined Authority O&S Committee

Councillor Sarfraz Nazir ; Councillor Angela Tait (Substitute)

Councillor Mike Pollard ; Councillor Naveed Riaz (Substitute)

Councillor Rosie Watson ; Councillor Joanne Dodds (Substitute)

WY&Y Investment Committee

Cllr Alex Ross-Shaw

Also Business Investment Panel

West Yorkshire Combined Authority Transport Committee

Councillor Michael Ellis ; Councillor Ian Greenwood ; Councillor Hassan Khan ; Councillor Taj Salam

Cllr Alex Ross-Shaw (Portfolio Holder, Regeneration, Transport and Housing) – for information

Bradford District Consultation Sub-Committee 2018-19

Councillor Taj Salam (Chair)
Gareth Logan (Deputy Chair)
Councillor Michael Ellis
Councillor Hassan Khan
Councillor Ian Greenwood

Public Representatives
Christopher Allan ; James Craig ; Stephen Hetherington ;
David Hill ; Andrew Jewsbury; Patricia Joseph-Gray ; Peter
Ketley; Nasreen Khan ; Norah McWilliam; Andrew Noble ;
Graham Peacock ; John Prestage ; Keith Renshaw; and
Barrie Rigg

LEP – Chair Roger Marsh

Cllr Susan Hinchcliffe; *Cllr Imran Khan – Substitute*

Business representatives from Bradford District also on LEP Joanna Robinson; Amir Hussain

LEP Panels

Business Innovation and Growth Panel	Cllr Ross-Shaw Kersten England CX as Lead CX for LCR
Place Panel	Cllr Susan Hinchcliffe (the Combined Authority); Cllr Ross-Shaw
Inclusive Growth and Public Policy Panel	Cllr Ross-Shaw
Green Economy Panel	Cllr Ferriby
Business Investment Panel	Cllr Ross-Shaw

**Appendix 2c) continued The Combined Authority Involvement in Outside Bodies
2018-19 – from AGM June 2018**

Outside Body	Named Representative
TfN Members' Board ¹	Representative: Cllr Judith Blake Substitute: Cllr Susan Hinchcliffe
TfN Scrutiny Committee	Representative: Cllr Eric Firth Substitute: Cllr Barry Collins
Rail North Ltd	Representative: Cllr Judith Blake (Director) Substitute: Cllr Susan Hinchcliffe (Alternate Director)
East Coast Main Line Authorities ²	Representative: Cllr Eric Firth
HS2 East	Representative: Cllr Judith Blake
City Regions Transport Special Interest Group	Representatives: Chair of Transport Committee Deputy Chair of Transport Committee Leader of opposition on Transport Committee

Appendix 3 – the Combined Authority Corporate Plan 2018-19- extract

Including future ambitions and Key Performance Indicators KPIs – Overview & Key Work Areas 2018-19

Highlights from 2017/2018 include:

- 2,400+ businesses supported to grow and become more productive through the LEP Growth Service, delivered with partner councils.
- £6.5 million worth of LEP grants provided to help over 200 small and medium-sized enterprises (SMEs) grow and create jobs
- State of the art facilities including Northern Dental Education Centre (NORDEC) in Bradford
- 16,800 interactions between employers and young people in 160 schools organised this year as a result of the Enterprise Adviser programme
- 4,000 apprenticeship opportunities across the City Region created for 16-24 year olds from the apprenticeship grant for employers over the past two years
- £18 million funding provided for vital bus links for communities across West Yorkshire that wouldn't otherwise have had a bus service.
- £56 million invested in providing affordable bus travel for young people and people over retirement age.
- 200,000 people now travel around the region using MCard smartcard every week, and this year introduction of a new Android app and self-service ticket machines in bus and train stations.
- £1 million invested in measures to speed up buses at congestion hotspots across West Yorkshire thanks to our Bus18 partnership with bus operators
- 33 access buses operated across West Yorkshire to help older and disabled people live more independent lives
- 100,000 people used the Metro-branded bus stations daily.
- £23.5 million investment made in new, low-emission buses by bus operators, Arriva and First West Yorkshire, through the Bus18 partnership.
- £4.2 million secured to retrofit buses in West Yorkshire to reduce emissions and improve air quality.
- £2.9 million LEP Growth Deal funding invested in tackling fuel poverty across Leeds City Region
- 600 households benefitted from reduced energy bills through improvements made via the Better Homes Yorkshire programme
- £10.9 million invested in building Low Moor station in Bradford
- £173.5 million secured from the Department of Transport in partnership with Leeds City Council for the #ConnectingLeeds programme which will transform the city's bus service, expand Park and Ride provision and develop proposals for three new train stations
- 20,000 new jobs set to be created in Leeds City Region as a result of HS2. the Combined Authority have continued to lobby for increased investment in the region's transport network over the past year through participation in Transport for the North, ensuring stops in Bradford, Leeds and York were included in plans for the new high-speed Northern Powerhouse Rail line when they were published in February
- Two new strategies adopted setting out how the Combined Authority will work

with partners to improve the overall transport network and bus system. This is alongside a new masterplan for Leeds station in preparation for HS2 arriving, and an overall HS2 Growth Strategy setting out how the benefits of high-speed rail for local people and communities can be maximised.

- Support to Leeds and Bradford Councils - the CityConnect Cycle Superhighway – the longest segregated cycleway in the country, linking these two major Yorkshire cities.

Corporate Plan - 2018/19

Boosting Productivity

The Combined Authority aim to close the gap between Leeds City Region's productivity rate and the UK average, which could add £10 billion to the economy and create thousands more skilled jobs. Together we are working to deliver £3.7 billion in additional annual economic output for the region and create 35,000 additional jobs by 2036. the Combined Authority will focus on boosting business productivity through innovation, encouraging exports and expansion, and meeting the demands of businesses for a workforce with the right skills.

- Supporting a further 3,650 businesses in our region to grow and become more productive
- Helping create 500 jobs through our support for businesses
- Attracting new global investors to the region with the aim of creating 1,500 new jobs
- Establishing a team to manage relationships with at least 120 internationally owned firms already within the region, and work with them to secure new investment and jobs
- Promoting Leeds City Region's strengths in the key sectors of advanced manufacturing, digital, healthcare and financial and professional services, securing 180 meetings with investors
- Inspiring a further 100 companies to export and a further 100 to increase their global trade
- Addressing skills shortages in key sectors by enabling 1,400 employees of City Region businesses to improve their skills with support from our LEP Skills Service
- Boosting the region's productivity rate by supporting 70 businesses to develop innovative new products and processes
- Producing a new Digital Framework for Leeds City Region, setting out plans to boost our region's fast-growing tech sector and make every business a digital business
- Supporting business innovation and productivity with the completion of two new innovation and incubation facilities: the Nexus innovation centre at the University of Leeds and the Huddersfield Innovation and Incubation Project

the Combined Authority/LEP long-term ambitions:

- *Close the gap between Leeds City Region's productivity rate and the UK average – adding £10 billion to our economy*
- *£3.7 billion in additional annual economic output for the region by 2036 as a result of our shared Growth Deal-funded projects that benefit our resident, businesses and visitors*
- *35,000 additional jobs by 2036 2018/19 headline success measures*

- *A Local Inclusive Industrial Strategy for the City Region developed by the end of March 2019*
- *24,898 square metres of new floorspace and 12,100 square metres of refurbished floorspace through economic regeneration projects funded through our Growth Deal*
- *2,750 businesses who want to grow supported through the LEP Growth Service*
- *500 jobs created in those businesses receiving intensive support from the LEP Growth Service*
- *A further 1,500 new jobs created in the region through the work of the inward investment service*
- *75% of those businesses who receive intensive support from the LEP Growth Service achieve growth*

Enabling Inclusive Growth

As economies globally look to tackle inequality, we aim to be a leader in promoting inclusive economic growth – in other words focus our efforts on supporting everyone in the City Region to feel the benefits of a strong economy – with a particular focus on diversity and those in communities high on the multiple deprivation index. Alongside this, we will continue our efforts to improve air quality and minimise the impact of climate change on communities and businesses. Working with our partners in the region we aim to reduce the proportion of jobs that pay less than the real Living Wage and reduce the employment rate gap for all disadvantaged groups. We will also work to significantly increase the number of key regional organisations who are committed to putting in place inclusive growth initiatives by becoming ‘inclusive anchor organisations’

Connecting people to skills and jobs

- Ensuring our employment and skills programmes promote inclusive growth by supporting the progression of low paid workers and providing additional education and careers activities to less advantaged pupils
- Creating 1,000 apprenticeship opportunities through our advice and support for businesses
- Working in close partnership with colleges in the City Region to ensure that education and training provides the skills our economy and businesses need
- Providing accessible transport services for people with personalised travel needs through our AccessBus service, and help children with special educational needs travel safely between home and school
- Coordinating home to school transport on behalf of our partner councils
- Expanding the range of digital services to help people find travel information and buy tickets online, while reducing paper-based services
- Enabling people to travel around the region easily and affordably through our Card – the most extensive smartcard scheme outside London – generating £30 million in ticket sales
- Expanding the range of travel discounts for younger people through our concessionary fare scheme and close working with bus and rail operators
- Continuing to work in partnership with bus operators to transform the quality, accessibility and responsiveness of bus services in the region
- Enabling over 6,000 people and businesses to see the health, environmental and economic benefits of cycling and walking through cycling training and grants and

other activity via our CityConnect programme

Transforming our places through regeneration, housing and development

- Enabling 61 economic regeneration projects worth £45 million to go ahead
- Completing new world-class college facilities at Kirklees College's Dewsbury Learning Quarter and Leeds College of Building, and continue supporting the construction of Leeds City College's Quarry Hill campus
- Supporting development of a Leeds City Region Accelerating Housing Delivery Prospectus, working with our partner councils and housing developers to secure the funding and resources to build up to 13,000 new homes a year to meet housing demand and support economic growth in the City Region
- Enabling 450 new homes to be built through our grant and loan investment, including 200 homes on the New Bolton Woods and Beech Hill developments in Bradford
- Installing new superfast broadband infrastructure to benefit more than 49,000 residents and businesses in West Yorkshire and York who cannot yet access superfast broadband
- Helping attract new business investment to York by enabling 8,000 square metres of new commercial floorspace to be built at York Central
- Setting up a dedicated team to speed up the development and use of Enterprise Zone sites in Leeds and along the M62 corridor

Creating a cleaner, greener environment

- Helping communities get access to low cost, low carbon, locally generated energy by investing £4 million of Growth Deal money in the Leeds district heat network – one of 16 commercially viable district heat schemes identified across Leeds City Region
- Enabling 1,000 households to save money and become more energy efficient through the Better Homes Yorkshire programme
- Supporting 80 businesses across Leeds City Region to save money on their energy bills and improve their productivity in relation to use of water and waste through resource efficiency funding and advice
- Providing sustainable travel advice and support to businesses, recruiting a further 80 new businesses to our 360-strong Travel Plan Network
- Improving air quality by working with transport operators to provide cleaner buses, spending a £4.2 million government grant to upgrade the emissions standards of mid-life buses and taking advantage of opportunities to test new fuel technologies. Supporting Leeds in plans for a low emissions zone
- Producing a Leeds City Region Energy Strategy setting out how we will meet our region's energy needs and generate clean, low carbon energy, and a Green/ Blue Infrastructure Delivery Plan for how we will use our region's natural assets to protect against flooding

Long-term ambitions

- *Reduce the proportion of jobs that pay less than the real Living Wage*
- *Help more disadvantaged groups into work*
- *Increase the number of key regional organisations or "anchor organisations" committed to putting in place inclusive growth initiatives*
- *Improved air quality and energy efficiency 2018/19 headline success measures*

- *Delivering an enhanced model of employability, enterprise and careers education to 12,000 disadvantaged students*
- *Supporting 1,250 individuals to upskill in skills shortage areas*
- *Supporting 1,000 businesses to offer apprenticeships*
- *Helping 1,000 homes become more energy efficient through the Better Homes programme*

The provision of a high quality integrated transport system is a vital requirement of a competitive, inclusive economy. With our partners in the region we have developed a 20-year Transport Strategy to deliver a world-class, modern, integrated transport system, with ambitious targets for increasing trips by public transport, walking and cycling.

- Delivering over £70 million worth of transport infrastructure schemes through our West Yorkshire-plus Transport Fund and other funding programmes
- Creating more world-class cycling infrastructure enabling people to travel to work by bike including projects in York, Leeds, Bradford, Castleford and Wakefield, plus a scheme to open up cycle access to our region's canals
- Completing major new road schemes to reduce congestion on key commuter routes including Kirkgate in Wakefield and the first phase of the A629 in Halifax
- Moving other key transport schemes across West Yorkshire and York towards delivery by providing project management and transport planning expertise to local councils, enabling them to bring schemes forward for funding
- Kick-starting multi-million pound improvements to transport hubs in our towns and cities including Bradford Interchange, Halifax bus station, Castleford rail station gateway and New Station Street in Leeds
- Starting on site with the first phase of West Yorkshire's ultra-low-emission vehicle (ULEV) taxis project with the goal of making 5.1% of our region's taxis ULEVs by 2020
- Continuing to influence regional and national transport investment programmes – including Transport for the North's and Highways England's investment programmes – in the interest of our area's transport priorities
- Shaping the development of key rail and bus improvements including Northern Powerhouse Rail, the Transpennine route upgrade, Calder Valley improvements and East Coast Mainline
- Supporting the delivery of the #ConnectingLeeds programme, working with Leeds City Council to provide faster bus journeys, improved city centre and local transport interchanges and new Park and Ride sites
- Developing proposals for four new rail stations in West Yorkshire
- Continuing to work in partnership with Leeds Bradford Airport

Long-term ambitions

- *A world-class, modern, integrated transport system*
- *Increased trips by public transport, walking and cycling 2018/19 headline success measures*
- *13 significant transport projects completed by March 2019 with 11 projects on site*
- *Support partners to complete two significant transport projects by March 2019 with a further nine on site*

- | |
|--|
| <ul style="list-style-type: none">• <i>MCard sales increased by 10%</i>• <i>98% of all travel information transactions/ enquiries made online</i> |
|--|

Championing the region nationally and internationally and securing the powers and investment to put our ambitions into action is central to our shared work. Over the coming year, working with partners both in the City Region and across Yorkshire, the Combined Authority intend to:

- Continue to support political leaders' case for an ambitious devolution deal for our region, over whatever geography, securing the powers and resources to maintain investment in the region
- Develop a single, bold Local Inclusive Industrial Strategy to drive growth and boost productivity and earning power in the region to 2030 and beyond
- Bid for a significant share of funding opportunities that arise from Government when they support our priorities – including future rounds of Growth Deal funding
- Continue to develop long-term, evidence-led policies and secure funding to transform our City Region's local, regional, national and international transport connections
- Provide a Brexit evidence base, and ensure our policies and programmes take full account of Brexit. Work hard to ensure City Region European funding is fully allocated and play a key part in shaping the successor to EU funding through the UK Prosperity Fund
- Support our partner councils in developing evidence and policies on strategic planning and housing to save money and better coordinate activity across local authority boundaries. This includes work on minerals and waste planning, population and housing forecasts, housing market evidence and employment land reviews

Appendix 4 – The Combined Authority/LEP Overview

4a – the Combined Authority/LEP Key meetings

4b – the Combined Authority O&S Committee Meetings and key agenda items 2017-18-19 (since last Bradford Joint O&S Committee received an update)

4a – The Combined Authority/LEP Key meetings

(since last Bradford Joint O&S Committee)

The Combined Authority, LEP, Investment Committee & Transport Committee

The Combined Authority

<https://westyorkshire.moderngov.co.uk/ieListMeetings.aspx?Committeeld=133>

11 Oct 2018– Agenda

2 Aug 2018 - Agenda, Minutes

28 Jun 2018 - Agenda, Minutes; Annual Meeting

10 May 2018 - Agenda, Minutes

5 Apr 2018 - Agenda, Minutes

1 Feb 2018 - Agenda, Minutes

14 Dec 2017 - Agenda, Minutes

The LEP

<https://westyorkshire.moderngov.co.uk/mgCommitteeDetails.aspx?ID=150>

20 Sep 2018 - Agenda, Draft Minutes

13 Jun 2018 - Agenda, Minutes; Annual Meeting

27 Mar 2018 - Agenda, Minutes

16 Jan 2018 - Agenda, Minutes

29 Nov 2017 - Agenda, Minutes

WY&Y Investment Committee

7 Nov 2018 - Agenda

5 Sep 2018 - Agenda

4 Jul 2018 - Agenda, Minutes

5 Jun 2018 - Agenda, Minutes

18 Apr 2018 - Agenda, Minutes

21 Mar 2018 - Agenda, Minutes

3 Jan 2018 - Agenda, Minutes

9 Nov 2017 - Agenda, Minutes

Transport Committee

<https://westyorkshire.moderngov.co.uk/ieListMeetings.aspx?Committeeld=138>

21 Sep 2018 - Agenda

6 Jul 2018 - Agenda, Minutes

25 May 2018 - Agenda, Minutes

16 Mar 2018 - Agenda, Minutes

12 Jan 2018 - Agenda, Minutes

17 Nov 2017 - Agenda, Minutes

4b - The Combined Authority O&S Committee Meetings and key agenda items 2017-18-19 (since last Bradford Joint O&S Committee received an update)

Forward Programme of Work – Provisional

22 March 2019

- Business grants criteria
- Transport (working group report – to be confirmed)
- Devolution (to be confirmed)
- Corporate Plan and performance (to be confirmed)

18 January 2019

- Inclusive Growth
- Apprenticeships
- Assurance Framework / LEP Review (to be confirmed)
- Devolution (to be confirmed)
- Draft Budget 2019/20 (for information)

16 Nov 2018 - Agenda

4. MINUTES OF THE MEETING HELD ON 14 SEPTEMBER 2018
5. GOVERNANCE ARRANGEMENTS
6. CHAIR'S UPDATE
7. SCRUTINY WORK PROGRAMME
8. FLOOD REVIEW
9. THE COMBINED AUTHORITY'S ENGAGEMENT WITH THE PUBLIC
10. DEVOLUTION

14 Sep 2018 – Agenda, minutes pending

4. MINUTES OF THE MEETING HELD ON 13 JULY 2018
5. GOVERNANCE ARRANGEMENTS
6. SCRUTINY WORK PROGRAMME
7. MINISTERIAL REVIEW OF LOCAL ENTERPRISE PARTNERSHIPS (LEPS) - LEEDS CITY REGION RESPONSE
8. BUSINESS GRANTS
9. BUSINESS PLANNING AND BUDGET 2019/20
10. "WEST YORKSHIRE... AND BEYOND: CALDERDALE COUNCIL'S CONTRIBUTION TO THE COMBINED AUTHORITY" Presented by Councillor Jenny Lynn, Strategy and Performance Scrutiny Board (Calderdale Council)

13 Jul 2018 - Agenda, Minutes

4. MINUTES OF THE MEETING HELD ON 24 JANUARY 2018
5. GOVERNANCE ARRANGEMENTS
6. SCRUTINY WORK PROGRAMME
7. POLICY FRAMEWORK AND LOCAL INCLUSIVE INDUSTRIAL STRATEGY
8. DEVOLUTION

24 Jan 2018 - Agenda, Minutes

4. MINUTES OF THE MEETING HELD ON 4 JANUARY 2018
5. OXFORD GB2 LOAN WORKING GROUP REPORT
6. ECONOMIC SERVICES - BUSINESS GRANTS

7. TRANSPORT COMMITTEE - PRIORITIES & SPEND - Councillor Keith Wakefield, Chair of the Combined Authority Transport Committee
8. ASSURANCE FRAMEWORK - ANNUAL REVIEW
9. DEVOLUTION - verbal update
10. FORWARD PROGRAMME OF WORK

4 Jan 2018 - Agenda, Minutes

4. MINUTES OF THE MEETING HELD ON 15 NOVEMBER 2017
5. BUSINESS PLANNING AND BUDGET 2018/19
6. UPDATE AND REVIEW OF NEW GOVERNANCE ARRANGEMENTS

15 Nov 2017 - Agenda, Minutes

4. MINUTES OF THE MEETING HELD ON 20 SEPTEMBER 2017
5. BUSINESS PLANNING & BUDGET 2018/19
6. DEVOLUTION - verbal update
7. FORWARD PROGRAMME OF WORK
8. FEEDBACK FROM OVERVIEW & SCRUTINY WORKING GROUPS – verbal update
9. ITEMS FOR FEEDBACK TO the Combined Authority

Bradford District Consultation Sub Committee -

<https://westyorkshire.moderngov.co.uk/mgCommitteeDetails.aspx?ID=136>

Appendix 5 – Investment & Schemes

5a) Bradford District Headlines

2.7 In partnership with the council the Combined Authority have:

Allocated over £200m Growth Deal and Transport Fund investment to Bradford projects (with £57m forecast to be spent by March 2021) Schemes now have their own dedicated web page on the Combined Authority website.

- Completed and opened the £13m Apperley Bridge and Kirkstall Forge train stations and £10.8million Low Moor train station – the former reached its five-year passenger target in just 12 weeks
- Helped deliver the 23km cycle superhighway between Bradford and Leeds – 650,000 trips recorded since July 2016
- Supported local economies and enabled people to travel to work, school and access vital services by running Bradford Interchange, operating services such as AccessBus and home to school travel, and providing subsidised travel for young and older people
- Supported the regeneration of Bradford Odeon by contributing £325k Growth Deal investment and helping secure £4m through the Northern Cultural Regeneration Fund
- Supported business growth and job creation by:
 - jointly funded 1.5 FTE Growth Managers to provide intensive support to local firms
 - providing £6.2m capital grant investment to local businesses
 - providing access to other business support services through the LEP Growth Service and the development of European funding calls, including support for innovation, export, digital, resource efficiency and start-ups
- £3.6million Growth Deal investment has helped kick-start the New Bolton Woods urban village development. The preparation works enable faster development of the site, seeing initial construction of 145 homes with around 1,000 homes projected when the development is fully completed. Without Growth Deal investment the land would have been significantly more difficult and expensive to develop for new housing.
- Invested £419,000 Skills Capital in upgrading Shipley College facilities at Saltaire
- Supported 586 businesses to employ apprentices with at last £703,200 apprentice grants for employers
- Supported 44 Bradford secondary schools to deliver 49836 employers encounters since September 2017 with a focus on social mobility via the Enterprise Coordinator team working in partnership with the Bradford Opportunity Area, Careers and Enterprise Company and Bradford Pathways.
- Spatial Priority Areas (SPAs) and prioritising investment in SPAs to maximise the City Region's economic, housing and regeneration potential. Three categories of SPAs have been identified: Urban Growth Centres; Housing Growth Areas; and Employment Growth Areas. Bradford has a SPA in each of the three categories:
 - **Bradford City Centre** is identified as an Urban Growth Centre
 - **Bradford-Shipley Canal Road Corridor** is identified as a Housing Growth Area (with support for New Bolton Woods)
 - **Gain Lane, Parry Lane & Staithgate Lane** form part of the pan city region M62 Enterprise Zone which is identified as an Employment Growth Area

- The Transforming Cities Fund Bid prioritises the corridors for **Leeds to Bradford, Halifax and the Calder Valley** and **Bradford to South Bradford & North Kirklees** as well as **Bradford priority gateways (Interchange and Forster Square)**. **Bradford – Aire Valey to Skipton and East Lancashire** also a priority route as part of the Northern Powerhouse Transport Strategy.
- Support to Leeds and Bradford Councils - the CityConnect Cycle Superhighway – the longest segregated cycleway in the country, linking these two major Yorkshire cities.
- Business Rates pool money is now being invested into four schemes (details below) for **The District Health and Social Care One Workforce; The Screen Skills Diversity ; Bradford District Community Led Local Development CLLD; Cultural Capacity Building.**
- **Leeds City region Connectivity Strategy - Mass transit system for 2033**

5b) Investment and Delivery Bradford Priority Schemes - Growth Deal financial dashboard – extract

Extract from PIMS – Outputs/Community Benefits – to be ready for Q3 reporting

SEP Priority	Project Name	Original Allocation	Actual & Forecast Total Spend 2018/19	Total to 2020/21	Post 2020/21 Forecast	Total CA Cost
Priority 4a - Housing and Regeneration	Bradford Odeon	£330,000	£325,000	£325,000	£0	£325,000
	Bradford, One City Park	£5,200,000	£0	£5,200,000	£0	£5,200,000
	New Bolton Woods	£3,600,000	£600,000	£3,600,000	£0	£3,600,000
Priority 4a - Housing and Regeneration Total		£9,130,000	£925,000	£9,125,000	£0	£9,125,000
	A650 Hard Ings Road (Phase 1) - Hard Ings Road Only	£10,250,000	£2,720,766	£9,976,225	£64,427	£10,040,652
	A650 Tong Street	£7,070,000	£78,639	£1,839,567	£10,585,433	£12,425,000
	Bradford Forster Square Station Gateway	£17,030,000	£458,625	£17,196,000	£115,000	£17,311,000
	Bradford Interchange Station Gateway (Phase 1)	£10,880,000	£119,035	£792,396	£4,837,604	£5,630,000
	Bradford Interchange Station Gateway (Phase 2)	£0	£346,283	£512,000	£0	£512,000
	Bradford to Shipley Corridor	£47,900,000	£733,253	£2,668,253	£45,206,747	£47,875,000
	Corridor Improvement Programme - Bradford, A6177 Great Horton Road - Cross Lane (12)	£2,500,000	£282,549	£2,480,000	£20,000	£2,500,000
	Corridor Improvement Programme - Bradford, A6177 Great Horton Road - Horton Grange Road (15)	£3,150,000	£253,810	£3,130,000	£20,000	£3,150,000
	Corridor Improvement Programme - Bradford, A6177 Thornton Road - Toller Lane (10)	£8,500,000	£270,883	£8,470,000	£30,000	£8,500,000
	Corridor Improvement Programme - Bradford, A650 Shipley Airedale - A647 Leeds Road	£10,300,000	£0	£0	£0	£0
	Harrogate Road - New Line	£4,920,000	£497,782	£6,579,950	£19,050	£6,599,000
	South East Bradford Access Road	£46,310,000	£263,648	£2,953,907	£43,356,093	£46,310,000
Priority 4b - West Yorkshire + Transport Fund Total		£168,810,000	£6,025,273	£56,598,298	£104,254,354	£160,852,652
	Grand Total	£177,940,000	£6,950,273	£65,723,298	£104,254,354	£169,977,652

5c) Growth Deal Financial Dashboard – Autumn 2018 - for the Committee's consideration

West Yorkshire and York Investment Committee Wednesday, 7th November 2018
Latest Growth Deal financial Dashboard - (September 2018)

<https://westyorkshire.moderngov.co.uk/documents/s9511/Item%205%20-%20Appendix%201.pdf>

5d) Growth Deal dashboard– Summer 2018 – for the Committee's consideration

West Yorkshire and York Investment Committee Wednesday, 5th September 2018
Growth Deal dashboard Figures accurate up to: June 2018

<https://westyorkshire.moderngov.co.uk/documents/s8713/Item%206%20-%20Appendix%201.pdf>

5e) WY+TF Pipeline– Summer 2018 – for the Committee's consideration

West Yorkshire Transport Fund dashboard Target Actual Figures accurate up to: June 2018

<https://westyorkshire.moderngov.co.uk/documents/s8714/Item%206%20-%20Appendix%202.pdf>

5f) Other funds and investments

i) Business Rates Pool - 2018-19

The District Health and Social Care One Workforce £1,151,000.

This proposal addresses a critical requirement to develop a sustainable and inclusive approach to re-balance the health and social care (HSC) economy in Bradford. The vision is twofold: firstly, bring together the requirements for more health and social care workers with those currently furthest from those opportunities, bringing sustainable benefits to both sides, particularly economically inactive women from South Asian communities. Secondly, by bringing together the existing assets in Bradford, a world-leading research base; a strong NHS and academic provision, alongside an innovative approach to health and social care learning and development, Bradford will be able to attract those practitioners into HSC who want to work in a place where they can make real difference and see personal progression. Ultimately, the identified interventions will enable Bradford to deliver inclusive economic growth with the District.

The overall economic vision for Bradford District is to be a high-value, high-skill economy at the heart of Leeds City Region and the Northern Powerhouse. This will be driven by the diverse and dynamic communities, with innovative and productive businesses delivering inclusive growth, good jobs and opportunity for all. This proposal supports the delivery of this ambition. It is designed to create a demand driven, system-wide integrated workforce development and recruitment approach that enables local residents to access employment opportunities while allowing our local employers to recruit, educate and train the talent they require to deliver outstanding health and social care services

The Screen Skills Diversity Project for £505,500.

This project will address the skills needs of the film and television production sector in the Leeds City Region. It will focus on practical interventions to enable young and talented

people from disadvantaged and diverse backgrounds to access employment in the Creative Sector. There is clear evidence to show that whilst there is strong interest in the film production sector amongst our region's young people, representation by ethnic minorities and those from disadvantaged backgrounds remains very low.

At the heart of our approach is an inclusive programme that will offer targeted support for those wishing to enter the industry. Our approach will address key issues such as understanding the opportunities available within the sector, building industry networks and connections, creating work experience possibilities and identifying appropriate role models

Bradford District Community Led Local Development CLLD £500,000

The project is the delivery of the Community Led Local Development (CLLD) Strategies for the Bradford Central and Keighley areas in Leeds City Region. These strategies have been developed and are led by two Local Action Groups (LAG), comprising Bradford Central and Keighley community stakeholders representing public, private and local socio-economic interests, and in consultation with the local communities. With the aim of empowering these communities, individual residents and local businesses are also on the LAG, ensuring that they are actively involved in shaping the future work of the partnership and ensuring local needs are addressed. Both Local Development Strategies (LDS), and the activities that will be delivered through this project, focus on the 20% most deprived Lower Super Output Areas (Indices of Multiple Deprivation 2010) in the Bradford Central wards of City, Great Horton and Manningham and the Keighley wards of Keighley East, West and Central. The combined areas cover a total population of 72,984 residents. Both areas are ethnically mixed, predominantly of white and Pakistani origin, with recent settlement of Eastern European migrants. The areas have higher than average unemployment, higher levels of deprivation and lower levels of attainment and qualifications than much of the surrounding areas and compared to District, Sub-regional and national comparators. The project has secured ESIF funding with ERDF and ESF grant agreements now in place, with Bradford Council as the Accountable Body. Project management will be undertaken by key delivery organisations within the CLLD areas. Bradford – Action for Business and CNet; and for Keighley - Airedale Enterprise Services. The CLLD model is complementary to other development support in the Bradford District. CLLD can mobilise and involve local communities and organisations to contribute to achieving sustainable and inclusive growth

Cultural Capacity Building £539,325

This project comprises a three-year plan to transform the skills, infrastructure, capacity and confidence of Bradford's cultural and sport sector so that the District can begin to make a distinctive and significant contribution to Yorkshire's cultural landscape, grow a series of major events capable of attracting regional, national and international audiences, significantly increase visitors to the district, begin to change perceptions of Bradford and prepare to launch a bid to stage the 2025 UK City of Culture by 2020/21.

It builds on investment already made in the last twelve months to achieve collaborative working across the cultural sector and strengthen its leadership, and will use the growth of a series of regular events to further enhance partnership working, build skills and experience, as well as growing new audiences and delivering increased economic impact. This will sit alongside targeted support to attract and retain creative businesses and individuals to live and work in the city and marketing and promotional activity to raise Bradford's profile as a place to enjoy culture, sport and leisure including food.

20 bids funded by the pool, with the total value of £12,886,736 –

- Health and Social Care 'One Workforce' – City of Bradford MDC
- Bradford and Keighley CLLD – City of Bradford MDC
- Major cultural and sporting events – building the bid for UK City of Culture 2025 – City of Bradford MDC (Year 1)
- Delivering Inclusive Growth in Calderdale – Calderdale Council
- Halifax and the Piece Hall Visitor Economy – Calderdale Council
- Harrogate Digital Incubator – Harrogate Borough Council
- Smart Harrogate – Harrogate Borough Council
- Enabling Housing Growth – Harrogate Borough Council
- Stalled Housing Brokerage Service – Kirklees Council
- Kirklees the Music District – Kirklees Council
- Investment programme – Kirklees Council
- Dewsbury Town Centre – Kirklees Council
- Transforming Leeds events – Leeds City Council
- Expansion of digital engagement – Leeds City Council
- Wakefield Waterfront – Rutland Mills – Wakefield Council
- York City Brand and Inclusive Growth - City of York Council
- Better by Design: York Housing delivery programme – City of York Council
- Castle Gateway masterplan and events – City of York Council
- Business Support / Investment Readiness programme – West Yorkshire Combined Authority (Year 1 and 2)
- Inclusive Growth in Leeds City Region - West Yorkshire Combined Authority (Year 1 and 2)

Paid and Committed 2018/19

Welcome to Yorkshire subscriptions

Screen Yorkshire

Leeds City Region Secretariat

Combined Authority Transport Fund

Tour de Yorkshire

Tour de Yorkshire (additional costs incurred by York)

Welcome to Yorkshire grant funding

Leeds Capital of Culture Bid

Contributions towards Economic Development

Great Exhibition of the North Satellite - Bradford

UCI 2019 Road World Cycling Championships - Harrogate

Maximising UNESCO City of Media Arts Designation - York

Leeds City Region Growth Services – Combined Authority

Raising Aspirations – Combined Authority

5f ii) Support to Businesses – Overview of Total LCR Economic Services Grants Approved by District

Overview of Total LCR Economic Services Grants Approved by District

Programme Start Date to June 2018

Source the Combined Authority O&S 14th September 2018 report

[Item 8ii - Appendix 2 - Business grant award and outcomes](#)

District	SME Stock %	Number of Grants	Grant Number %	Value of Grants	Average Grant	Grant Value %	Jobs Contracted
Barnsley	6%	38	0.8%	£1,814,329.20	£47,745.51	4.3%	290
Bradford	14%	837	18.1%	£6,601,085.64	£7,886.60	15.8%	705
Calderdale	8%	544	11.8%	£6,076,302.12	£11,169.67	14.6%	762
Craven	3%	21	0.5%	£390,592.77	£18,599.66	0.9%	68
Harrogate	8%	74	1.6%	£1,158,780.63	£15,659.20	2.8%	206
Kirklees	13%	908	19.7%	£6,130,506.88	£6,751.66	14.7%	672
Leeds	27%	1345	29.1%	£13,567,894.28	£10,087.65	32.5%	2073
Selby	3%	12	0.3%	£281,147.23	£23,428.94	0.7%	49
Wakefield	9%	574	12.4%	£4,665,681.52	£8,128.37	11.2%	2093
York	7%	266	5.8%	£1,038,457.59	£3,903.98	2.5%	100
TOTAL	100%	4619	100%	£41,724,777.86	£9,033.29	100%	7018

Business grant and support programmes delivered, or part funded, by the West Yorkshire Combined Authority

Business Growth Programme (Current iteration: 1 April 2015 – 31 March 2021) (Previous iteration: 1 January 2013 – 1 April 2015)

Apprenticeship Grants for Employers (AGE) (Current iteration: 1 August 2018 – 31 September 2019) (Previous iteration: 1 August 2015 – 31 July 2017)

Business Flood Recovery Fund (January 2016 – December 2016)

Ad:venture (1 July 2016 – 30 June 2019)

Digital Enterprise (1 September 2016 – 31 August 2019)

Resource Efficiency Fund (16 November 2016 – 31 October 2019)

Strategic Business Growth Programme (1 April 2017 – 31 December 2019)

Access Innovation (1 April 2017 – 31 December 2019)

Strategic Inward Investment Fund (7 July 2017 – 31 March 2021)

Digital Inward Investment Fund (January 2018 - 31 March 2021)

Economic Services Grants Approved - All Programmes, Start Date to June 2018

Total Grant Funding** £66,950,495.00

Total Target Jobs 9,721

Programme Start Date to June 2018

Actual Jobs 3,420

Number of Grants Offered - 4,619

** For the Resource Efficiency Fund, Access Innovation and Strategic Business Growth Programme this is the grant allocation only. For other programmes this includes the delivery costs.

The Leeds City Region Enterprise Partnership (LEP) is launching a business productivity pilot in September 2018 as part of the LEP and West Yorkshire Combined Authority's work to drive up productivity across Leeds City Region through private sector leadership. This has been identified by the Business, Innovation and Growth Panel as a priority for the City Region's emerging Local Inclusive Industrial Strategy.

To support firms in Leeds City Region to improve their productivity through capital investment grants, and to improve how they measure and report productivity gains. The pilot will award capital grants of between £25,000 and £100,000 to those businesses that best demonstrate how the investments will have a positive impact on their productivity. The recipients of the grants will not be required to create new jobs as a condition of the grant, but will need to maintain current employment levels. They will also be expected to clearly describe how they currently measure productivity and how it will improve following the investment project.

Appendix 6 – Local Inclusive Industrial Strategy Background - Autumn 2018

(As presented to LEP Green Economy Panel – October 2018)

<https://westyorkshire.moderngov.co.uk/documents/s9295/item%207%20Appendix%201%20DRAFT%20LIIS%20prospectus%20for%20discussion.pdf>