

Bradford Forster Square

December 2017 Consultation Event

Initial Report

Introduction

This report is an initial report on the consultation event which took place at Bradford Forster Square Station on the 12th and 13th December 2017. It gives outline details of the event and some of the results from the surveys completed by members of the public. Full results will be published in due course.

The Purpose of the consultation

- To raise the awareness of stakeholders about the plans for Forster Square Station
- To get feedback about the plans generally and certain specific elements in order to inform detailed design

Materials Used

Posters were put up round the station advertising the consultation event in the week leading up to the 12th December.

Small cards (credit card size) were been printed for handing out to people passing through the station who simply want to know where to get further information (website) and fill in the survey online.

Leaflets giving information which included a paper based version of the survey were also available.

Banners – pop ups to advertise the event were placed round the station during the event.

Large printed versions of the plans and images were available at an information table in the waiting room area.

The Event

The event took place at Bradford Forster Square Station on Tuesday 12th December and Wednesday 13th December, from 0700-1800 on each day.

Between these hours at least 2 project representatives were present with 3 or 4 present at busy times. Most users of the station were, understandably, just interested in getting from their train to wherever they were going or getting to their train. Most of the time project representatives were outside, handing out cards to users or explaining what the consultation was about. If users showed more interest, they were able to have a longer conversation at the table in the waiting area. Most users simply took a card, rather than requesting a leaflet and most of the responses to the survey were online (see below). The survey period was from 12th to 20th December and a box was available at the station ticket office for paper responses over this period.

The leaflet used during the consultation is shown at Appendix A. A website (www.bradford.gov.uk/forstersquare) was developed to provide an online presence for the consultation (see Appendix B), this included a prominent link to the online survey which was identical to the one shown in the leaflet. As part of the event a special email address (forstersquare@bradford.gov.uk) for any further queries was also created. This has received a number of emails already and is being monitored by project staff. Both the website and the email address remain active and can be used for further consultation events in the future.

The response from users during the event itself was positive, a large number of the small cards were handed out and some very positive comments made with a few station users and other stakeholders spending some time discussing the scheme with project representatives.

The staff at the station were very helpful and Northern (who manage the station) were also very helpful in facilitating the event. As well as WYCA and Bradford Council employees, staff from Arups and Costain who have an involvement in the project also helped out.

Survey Results

A total of 461 responses were received, though not all of these were complete. Of these only 83 were on paper forms. Three of the questions were multiple choice questions and details of these responses are below.

Question 1: What do you think about the proposals for Forster Square?

A five point scale was available with extremes marked “Strongly Disapprove” and “Strongly Approve”

A total of 437 responses were received to this question and percentages are out of 437.

	Number of responses	Percentage
Strongly Approve	238	54%
	138	32%
	35	8%
	11	3%
Strongly Disapprove	15	3%

This suggests there was overwhelming support for the scheme with 86% of respondents expressing a positive opinion

Question 2: Please rate how important each of the following facilities would be to you

A five point scale was available for each of the listed facilities with 1 being “not at all important” and 5 being “very important”. There was a slight variation in the number of responses by facility, as shown in the table below.

Facility	Average score	Number of responses
Cash machine	3.83	452
Heated waiting room	4.21	459
Toilets	4.50	459
Cafe	3.58	453
Two lifts as opposed to one	3.51	456
Shop/Newsagents	3.68	452
Indoor cycle parking (simple 'U' tube)	2.88	447
Indoor secure cycle parking (locked enclosure)	2.98	451

All the proposed facilities except for the cycle parking were felt to be important (scored an average of over 3) and toilets were felt to be particularly important

Question 3: Both the lift shafts and the roofs of the pods could be topped with either pointed or rounded arches, which would you prefer?

A simple choice between “Pointed”, “Rounded” and “Not Bothered” was available. In the online survey images explaining the choices were shown.

A total of 453 responses were received to this question and percentages are out of 453.

	Number of responses	Percentage
Pointed	90	20%
Rounded	243	54%

Not Bothered	120	26%
---------------------	-----	-----

There was a clear preference for rounded arches

Text responses

Two questions required free text responses (one about the proposed green space behind platform 3 and one asking for any further comments). These free text responses have not yet been analysed.

There was also the opportunity to supply contact details for those users who wanted to be kept informed about the project. Many respondents took the opportunity to supply their details and these will be retained for further communication activities.



We want to make a dramatic improvement to the station and we want to know what you think.

Bradford Council and the West Yorkshire Combined Authority (WYCA) together with Network Rail and Northern are planning a major redevelopment of Bradford Forster Square Station.

We want your views on the design and the facilities that the station needs to become a great gateway to Bradford City Centre.





We're planning to replace the existing station as well as the lift and staircase tower.

We want to:

- Create a much larger building with a modern airy design, a glass front and a 'green' roof
- Install two new lifts to provide access to Cheapside/Manor Row
- Incorporate the arches behind the station and the lifts into the building
- Put 'pods' into the arches to provide extra station facilities
- Provide a café, toilets and ticket facilities in a smaller building within the building
- Improve the layout and access arrangements on the Valley Road side
- Clear up the overgrown area behind the station and provide a green space or 'pocket park'
- Note that we won't be making any major changes to the railway tracks or the layout of the platforms.

Survey

What do you think of the proposals for Forster Square. (Please tick ✓)

Strongly Disapprove

Strongly Approve

Please rate how important each of the following facilities would be to you.

1 = not at all important, 5 = very important (Please tick ✓)

	1	2	3	4	5
Cash Machine	<input type="radio"/>	<input type="radio"/>	<input type="radio"/>	<input type="radio"/>	<input type="radio"/>
Heated Waiting Room	<input type="radio"/>	<input type="radio"/>	<input type="radio"/>	<input type="radio"/>	<input type="radio"/>
Toilets	<input type="radio"/>	<input type="radio"/>	<input type="radio"/>	<input type="radio"/>	<input type="radio"/>
Cafe	<input type="radio"/>	<input type="radio"/>	<input type="radio"/>	<input type="radio"/>	<input type="radio"/>
Two lifts as opposed to one	<input type="radio"/>	<input type="radio"/>	<input type="radio"/>	<input type="radio"/>	<input type="radio"/>
Shop Newsagents	<input type="radio"/>	<input type="radio"/>	<input type="radio"/>	<input type="radio"/>	<input type="radio"/>
Indoor Cycle Parking (Simple "U" tube)	<input type="radio"/>	<input type="radio"/>	<input type="radio"/>	<input type="radio"/>	<input type="radio"/>
Indoor Secure Cycle Parking (Locked enclosure)	<input type="radio"/>	<input type="radio"/>	<input type="radio"/>	<input type="radio"/>	<input type="radio"/>

Both the lift shafts and the roofs of the pods could be topped with either pointed or rounded arches. See the images in this leaflet, which would you prefer?

Please select your preference.

- Pointed Rounded Not Bothered

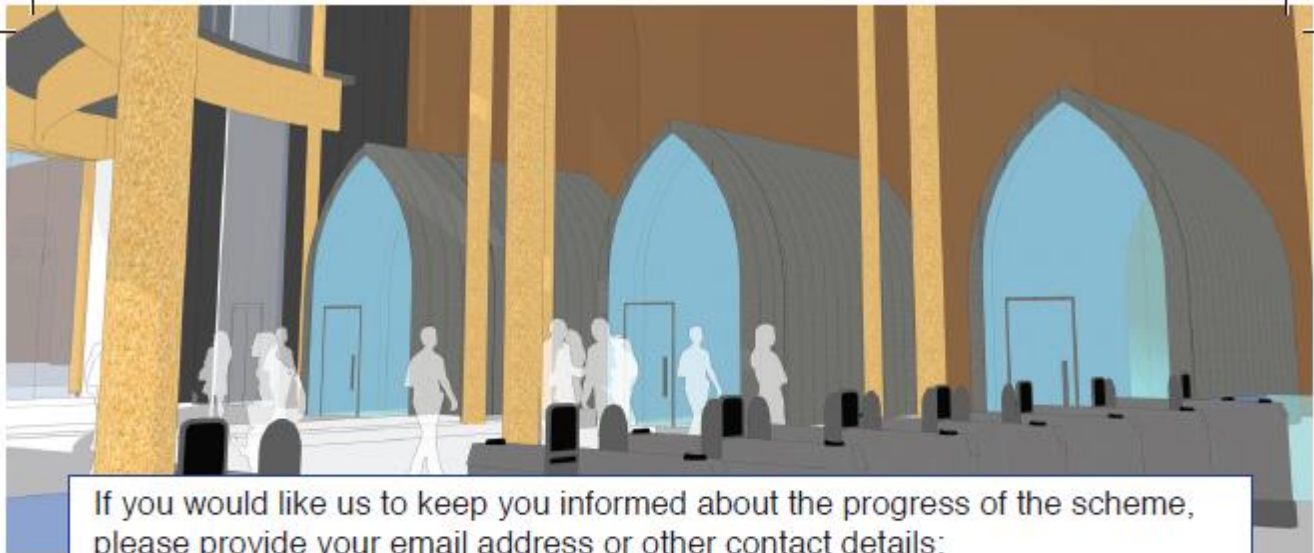
We're looking for ideas about how to use the area behind platform 3 and in front of the arches.

Do you have any ideas?

We'd be particularly interested if you know of any organisations that might like to be involved in developing this space.

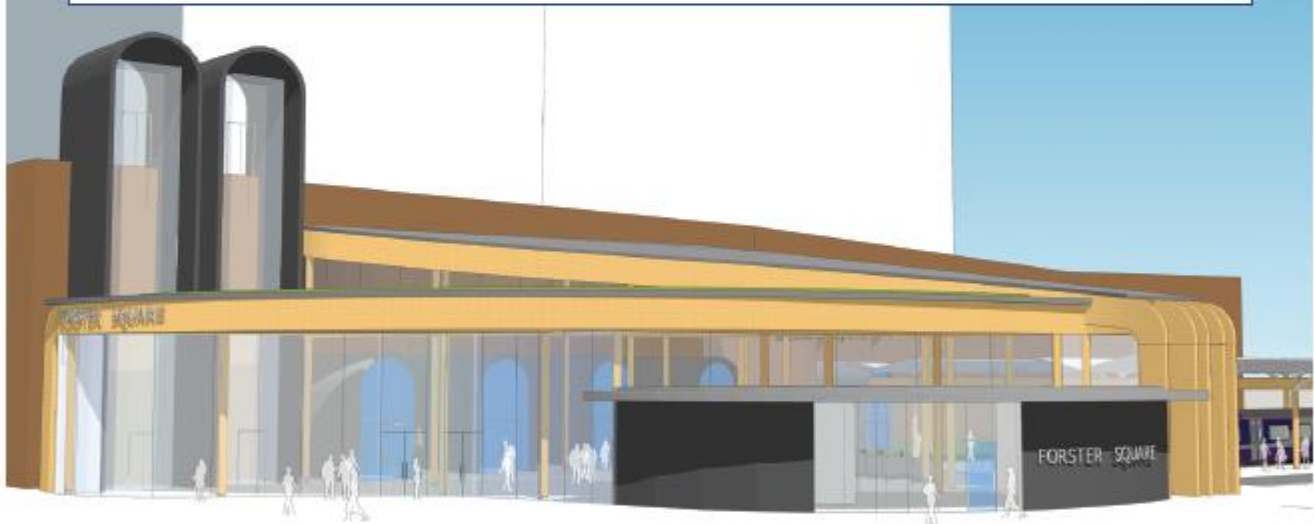
Do you have any further comments about the proposals for Forster Square Station?

Continued over the page



If you would like us to keep you informed about the progress of the scheme, please provide your email address or other contact details:

Data Protection Act 1998 - The information which you provide in this form will be used solely for the purpose of informing the redevelopment of Forster Square Station. The data will not be shared with any third party for marketing or commercial purposes.



To complete this survey online go to: www.bradford.gov.uk/forstersquare

(Note deadline of 20th December) or put this survey leaflet in the box at Forster Square Station on the 12th or 13th of December.

If you have any further comments or would like to get in touch with the team about the scheme you can email us at: **forstersquare@bradford.gov.uk**



Appendix B The information shown on the website (during the survey period this included a prominent link to the online survey).



Bradford Forster Square

We're planning changes to Forster Square Station

We want to make a dramatic improvement to the station and we want to know what you think.

Bradford Council and the West Yorkshire Combined Authority (WYCA) together with Network Rail and Northern are planning a major redevelopment of Bradford Forster Square Station. We want your views on the design and the facilities that the station needs to become a great gateway to Bradford City Centre.

We're planning to replace the existing station as well as the lift and staircase tower. We want to:

- Create a much larger building with a modern airy design, a glass front and a 'green' roof.
- Install two new lifts to provide access to Cheapside/Manor Row.
- Incorporate the arches behind the station and the lifts into the building.
- Put 'pods' into the arches to provide extra station facilities.
- Provide a café, toilets and ticket facilities in a smaller building within the building.
- Improve the layout and access arrangements on the Valley Road side.
- Clear up the overgrown area behind the station and provide a green space or 'pocket park'.

Note that we won't be making any major changes to the railway tracks or the layout of the platforms.



Our current plans include:

A bigger building

The whole feel of the station will be transformed with a light airy, spacious structure enclosing the lower lift entrances, the arches at the back of the station and the ticket gates. The roof will be high enough to reach above the arches on the Cheapside/Manor Road side and supported by slender columns. Glass walls and a clerestory window in the roof will add to the spacious feel of the building. A smaller building within the building will house a café, toilets and ticket facilities. Part of the building will be topped by a 'green' or 'living' roof, this will help to reduce storm water runoff and create a natural habitat.



New lifts

Two new glass fronted lifts will replace the existing lift and stairwell tower. The new lift shafts will be much slimmer than the existing arrangement which will mean a much better view of the station when approaching from the Midland Hotel direction. Two lifts should mean a much better service between the station and Cheapside/Manor Row and the lifts will be open for longer – between the first and last train times.



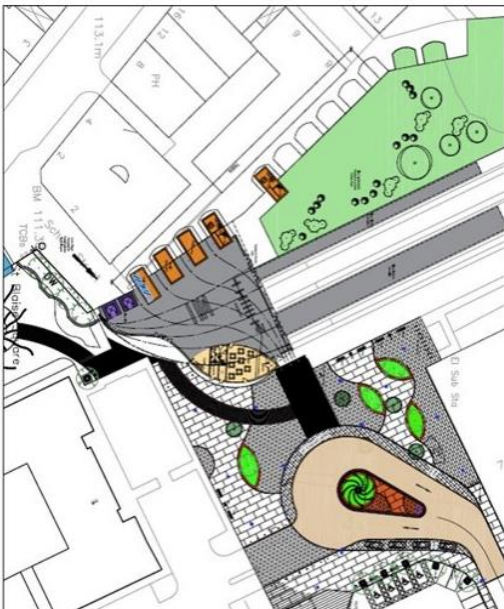
New facilities

The arches behind the station will be brought into the building and will be used to incorporate 'pods' - smaller structures which will be used for a range of different uses.



Improvements outside the station

We're going to be making big changes outside as well with improvements to the space leading down to Valley Road (next to Forster Square Retail Park). This will incorporate a turning loop for taxis and drop off and a larger pedestrian area. We'll also be making it easier to walk up from Lower Kirkgate, next to the Midland Hotel, making a more direct link to the Broadway Shopping Centre.



Green space

Behind the station, on the Manor Row side, we'll be rejuvenating the overgrown area between the station and the retaining wall with its attractive Victorian arches. This will be landscaped, perhaps creating a pocket park for Forster Square.

We want your views on the design and facilities that the station needs to become a great gateway to Bradford City Centre, and will soon publish a link to a survey for your feedback.