

HPV 2

Licensing Act 2003

## Club Premises Certificate

## BD/CLA0094

### Club Details

NAME OF CLUB IN WHOSE NAME THIS CERTIFICATE IS GRANTED AND RELEVANT POSTAL ADDRESS OF CLUB

### Crossflatts Cricket Club

IF DIFFERENT FROM ABOVE THE POSTAL ADDRESS OF CLUB PREMISES TO WHICH THE CERTIFICATE RELATES, OR IF NONE, ORDANCE SURVEY MAP REFERENCE OR DESCRIPTION

Ryshworth Park, Crossflatts, Bingley, West Yorkshire, BD16 2ER.

Telephone 01274 562050

WHERE THE CLUB PREMISES CERTIFICATE IS TIME LIMITED THE DATES

Not applicable

QUALIFYING CLUB ACTIVITIES AUTHORISED BY THE CERTIFICATE

- a performance of live music
- any playing of recorded music
- the supply of alcohol
- the supply of alcohol

THE TIMES THE CERTIFICATE AUTHORISES THE CARRYING OUT OF QUALIFYING CLUB ACTIVITIES

Activity (and Area if applicable)	Description	Time From	Time To
E. Performance of live music (Indoors)	Monday to Saturday	10:00am	11:00pm
	Sunday	Noon	10:30pm
	Christmas Day	Noon	3:00pm
	Christmas Day	7:00pm	10:30pm
	Good Friday	Noon	10:30pm
F. Playing of recorded music (Indoors)	Monday to Saturday	10:00am	11:00pm
	Sunday	Noon	10:30pm
	Christmas Day	Noon	3:00pm
	Christmas Day	7:00pm	10:30pm
	Good Friday	Noon	10:30pm
L. The supply of alcohol by or on behalf of a club, or to the order of, a member of the club for consumption ON and OFF the premises	Monday to Saturday	10:00am	11:00pm
	Sunday	Noon	10:30pm
	Christmas Day	Noon	3:00pm
	Christmas Day	7:00pm	10:30pm
	Good Friday	Noon	10:30pm
	New Years Eve		
10:00 hours until the start of permitted hours the following day.			
L. The sale by retail of alcohol by or on behalf of a club to a guest of a member of the club for consumption on the premises where the sale takes place	Monday to Saturday	10:00am	11:00pm
	Sunday	Noon	10:30pm
	Christmas Day	Noon	3:00pm
	Christmas Day	7:00pm	10:30pm

Licensing Act 2003

## Club Premises Certificate

BD/CLA0094

### THE TIMES THE CERTIFICATE AUTHORISES THE CARRYING OUT OF QUALIFYING CLUB ACTIVITIES continued ...

Activity (and Area if applicable)	Description	Time From	Time To
L. The sale by retail of alcohol by or on behalf of a club to a guest of a member of the club for consumption on the premises where the sale takes place continued ...	Good Friday	Noon	10:30pm
	New Years Eve		
	10:00 hours until the start of permitted hours the following day.		

### THE OPENING HOURS OF THE CLUB

Description	Time From	Time To
No restrictions.		

### WHERE THE CERTIFICATE AUTHORISES SUPPLIES OF ALCOHOL WHETHER THESE ARE ON AND / OR OFF SUPPLIES

- L. The supply of alcohol by or on behalf of a club, or to the order of, a member of the club for consumption ON and OFF the premises
- L. The sale by retail of alcohol by or on behalf of a club to a guest of a member of the club for consumption on the premises where the sale takes place

## **Annex 1 – Mandatory Conditions**

None

### **Embedded Conditions**

1. The supply of alcohol for consumption off the premises must be made at a time when the premises are open for the purposes of supplying alcohol, in accordance with the club premises certificate.
2. Any alcohol supplied for consumption off the premises must be in a sealed container.
3. Any supply of alcohol for consumption off the premises must be made to a member of the club in person.

## **Annex 2 – Conditions Consistent with Club Operating Schedule**

### **All four Licensing Objectives:**

None

### **The Prevention of Crime & Disorder:**

None

### **Public Safety:**

None

### **The Prevention of Public Nuisance:**

None

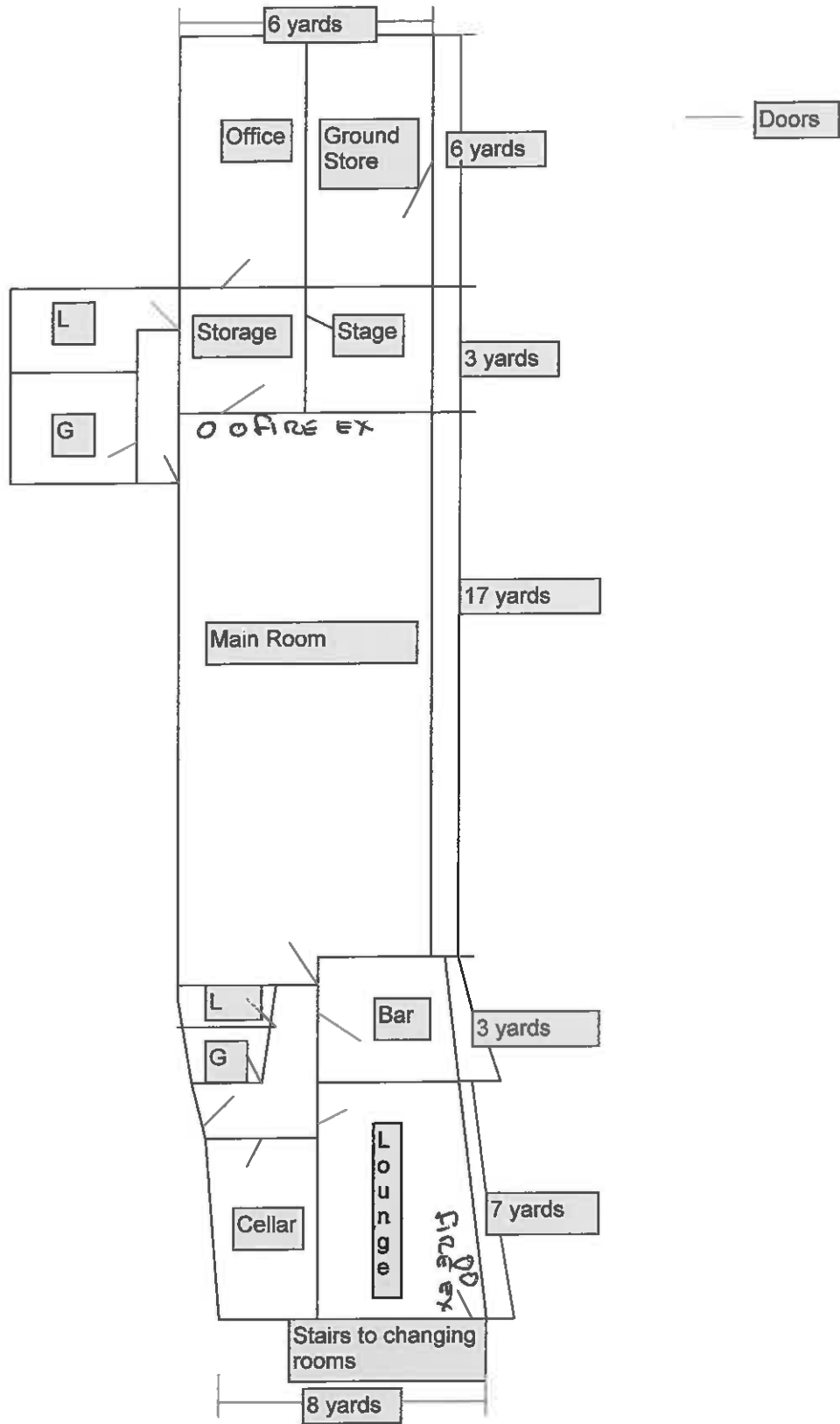
### **The Protection of Children from Harm:**

None

## **Annex 3 – Conditions attached after a hearing by the Licensing Authority**

Not Applicable.

# Crossflatts Cricket Club - Floor Plan



## Licensing Act 2003

### Club Premises Certificate Summary

**BD/CLA0094**

#### Club Details

NAME OF CLUB IN WHOSE NAME THE CERTIFICATE IS GRANTED AND RELEVANT REGISTERED POSTAL ADDRESS OF CLUB

**Crossflatts Cricket Club**

IF DIFFERENT FROM ABOVE THE POSTAL ADDRESS OF CLUB PREMISES TO WHICH THE CERTIFICATE RELATES, OR IF NONE, ORDINANCE SURVEY MAP REFERENCE OR DESCRIPTION

Ryshworth Park, Crossflatts, Bingley, West Yorkshire, BD16 2ER.

Telephone 01274 562050

WHERE THE CLUB PREMISES CERTIFICATE IS TIME LIMITED THE DATES

Not applicable

QUALIFYING CLUB ACTIVITIES AUTHORISED BY THE CERTIFICATE

- a performance of live music
- any playing of recorded music
- the supply of alcohol
- the supply of alcohol

THE TIMES THE CERTIFICATE AUTHORIZES THE CARRYING OUT OF QUALIFYING CLUB ACTIVITIES

Activity (and Area if applicable)	Description	Time From	Time To
E. Performance of live music (Indoors)	Monday to Saturday	10:00am	11:00pm
	Sunday	Noon	10:30pm
	Christmas Day	Noon	3:00pm
	Christmas Day	7:00pm	10:30pm
	Good Friday	Noon	10:30pm
F. Playing of recorded music (Indoors)	Monday to Saturday	10:00am	11:00pm
	Sunday	Noon	10:30pm
	Christmas Day	Noon	3:00pm
	Christmas Day	7:00pm	10:30pm
	Good Friday	Noon	10:30pm
L. The supply of alcohol by or on behalf of a club, or to the order of, a member of the club for consumption ON and OFF the premises	Monday to Saturday	10:00am	11:00pm
	Sunday	Noon	10:30pm
	Christmas Day	Noon	3:00pm
	Christmas Day	7:00pm	10:30pm
	Good Friday	Noon	10:30pm
	New Years Eve		
10:00 hours until the start of permitted hours the following day.			
L. The sale by retail of alcohol by or on behalf of a club to a guest of a member of the club for consumption on the premises where the sale takes place	Monday to Saturday	10:00am	11:00pm
	Sunday	Noon	10:30pm

## Licensing Act 2003

### Club Premises Certificate Summary

**BD/CLA0094**

#### THE TIMES THE CERTIFICATE AUTHORISES THE CARRYING OUT OF QUALIFYING CLUB ACTIVITIES - continued ...

Activity (and Area if applicable)	Description	Time From	Time To
L. The sale by retail of alcohol by or on behalf of a club to a guest of a member of the club for consumption on the premises where the sale takes place continued ...			
	Christmas Day	Noon	3:00pm
	Christmas Day	7:00pm	10:30pm
	Good Friday	Noon	10:30pm
	New Years Eve		
	10:00 hours until the start of permitted hours the following day.		

#### THE OPENING HOURS OF THE CLUB

Description	Time From	Time To
No restrictions.		

#### WHERE THE CERTIFICATE AUTHORISES SUPPLIES OF ALCOHOL WHETHER THESE ARE ON AND / OR OFF SUPPLIES

- L. The supply of alcohol by or on behalf of a club, or to the order of, a member of the club for consumption ON and OFF the premises
- L. The sale by retail of alcohol by or on behalf of a club to a guest of a member of the club for consumption on the premises where the sale takes place

#### STATE WHETHER ACCESS TO THE CLUB PREMISES BY CHILDREN IS RESTRICTED OR PROHIBITED

No restrictions.