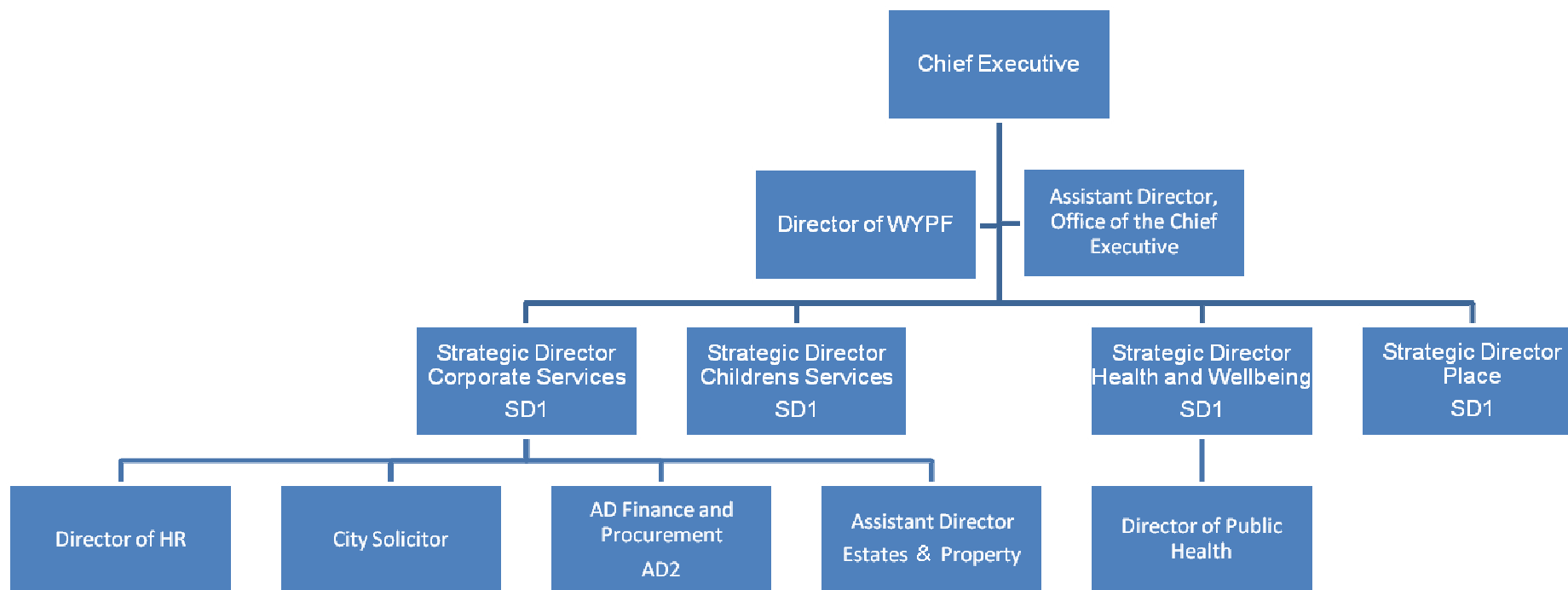


SENIOR MANAGEMENT STRUCTURE



The Director of HR, the City Solicitor and the Director of Public Health will remain members of CMT.

This structure shows those posts affected by the new structure. All AD posts in Regeneration excluding AD Post of Estates and Property and the AD posts in Environment and Sport will report to the SD Place.

All AD posts in the Department of Finance will report to the SD Corporate Services.