

Report of the Strategic Director (Children's Services) to the meeting of the Corporate & Scrutiny Committee to be held on 6th October 2016.

Q

Subject:

Arrangements by the Council and its partners to tackle child sexual exploitation.

Summary statement:

This report provides an update to the report presented to the Children's Services Overview and Scrutiny Committee on 8th October 2015 and subsequently to the District's Area Committees regarding the issue of child sexual exploitation (CSE). It sets out the arrangements that have been put in place, and which continue to develop, to safeguard children from CSE.

Michael Jameson
Strategic Director
Children's Services

Portfolio:

Health & Social Care

Report Contact: Jenny Cryer
Assistant Director, Performance,
Commissioning, Partnerships
Phone: (01274) 432438
E-mail: jenny.cryer@bradford.gov.uk

Overview & Scrutiny Area:

Corporate



1. SUMMARY

- 1.1 This report provides an update to the report presented to the Children's Services Overview and Scrutiny Committee on 8th October 2015 and subsequently to the District's Area Committees regarding the issue of child sexual exploitation (CSE). It sets out the arrangements that have been put in place and which continue to develop, to safeguard children from CSE.
- 1.2 **There is significant public concern regarding the issue of CSE. Members of the public with information that suggests children may be at risk of CSE regularly contact West Yorkshire Police or Bradford Children's Services and these concerns are followed up by the multi-agency CSE Hub. Information from the public is invaluable in protecting children from CSE and other safeguarding risks. Any member of the public wishing to share information about potential risk to a child should contact either the Police on 101 or Bradford Children's Specialist Services on 01274 435600.**
- 1.3 Detailed information is provided regarding the activity of the multi-agency CSE Hub during the business year April 2015 – March 2016. An in depth break down is provided of the workload of the Hub on one particular day: 29th March 2016.
- 1.4 The report also provides information about the multi-agency review of the Hub undertaken by BSCB in recent months. Updates are also provided about the commissioning of preventative services, training about CSE and the work of partners to investigate non-recent sexual exploitation and support victims.
- 1.5 This report develops significant themes from the previous reports regarding CSE published by the Council, in particular the Council Executive reports dated 15th January 2015 and 15th September 2015.

2. BACKGROUND

2.1 National context:

Tackling Child Sexual Exploitation continues to be a national priority for central government. The government departments leading this work are the Home Office and the Department for Education.

- 2.2 In 2009, the government guidance "Safeguarding Children and Young People from Sexual Exploitation" contained the following definition of Child Sexual Exploitation (CSE):

"Sexual exploitation of children and young people under 18 involves exploitative situations, contexts and relationships where young people (or a third person or persons) receive 'something' (e.g. food, accommodation, drugs, alcohol, cigarettes, affection, gifts, money) as a result of them performing, and/or another or others performing on them, sexual activities. Child sexual exploitation can occur through the use of technology without the child's immediate recognition; for example being persuaded to post sexual images on the Internet/mobile phones without immediate payment



or gain. In all cases, those exploiting the child/young person have power over them by virtue of their age, gender, intellect, physical strength and/or economic or other resources. Violence, coercion and intimidation are common, involvement in exploitative relationships being characterised in the main by the child or young person's limited availability of choice resulting from their social/economic and/or emotional vulnerability."

2.3 Nationally, understanding of the complexity of CSE has developed significantly since 2009 and there are currently a range of definitions used in different jurisdictions of the United Kingdom and by some voluntary sector organisations. In early 2016 the government consulted on options for a revised definition of CSE, to which Bradford Safeguarding Children Board (BSCB) made a submission. The government has not yet published the outcome of the consultation.

2.4 The Independent Inquiry into Child Sexual Abuse was established by the former Home Secretary, Theresa May. The Inquiry will investigate whether public bodies and other non-state institutions have taken seriously their duty of care to protect children from sexual abuse in England and Wales. The enquiry has launched 13 investigations to date. These investigations are:

- Accountability and Reparations;
- Cambridge House, Knowl View and Rochdale;
- Children in Custodial institutions;
- Children outside the UK;
- Child Sexual Exploitation by Organised Networks;
- Lambeth council;
- Lord Janner
- Nottinghamshire Councils;
- Residential Schools;
- The Anglican Church;
- The Internet
- The Roman Catholic Church;
- Westminster.

Among these 13 investigations are a number that have a particular focus on CSE or sectors where there is concern that previous arrangements have failed to effectively protect children from CSE.

2.5 It is acknowledged that the painstaking work of the Inquiry, incorporating the work of these 13 investigations, will take a considerable amount of time to be completed and to report. The Inquiry has established a consultative panel to ensure that the experiences and views of victims and survivors will be included in the final report and its recommendations. Further information regarding the work of the Inquiry can be found at the website: <https://www.iicsa.org.uk/>

2.6 On July 29th 2016, the Chief Executive of Bradford Council wrote to Dame Justice Lowell Goddard, the then chair of the Inquiry. The letter is attached to this report as appendix 2. The Chief Executive drew the chair's attention to the call for an independent inquiry into CSE in the Bradford area by Ms Angela Sinfield, who is the mother of one of the local victims of child sexual exploitation. The letter goes on to invite "robust scrutiny" of Bradford's record and arrangements.



2.7 The government decision, in 2015, to designate CSE a “national emergency” has reinforced the increasingly high priority given to CSE in local authority and police force areas. Later, this report will provide evidence of increased recognition of CSE and provision of services to those at risk of, or actually experiencing this form of abuse. The Chair of the National Association of Police and Crime Commissioners, Vera Baird QC, stated in July 2016 that the national cost of police efforts to tackle the “growing and tragic menace” of child sexual exploitation could treble to £3bn a year by 2020. This estimate does not include the cost to local authority services, the National Health Service and voluntary sector organisations.

2.8 Local context:

Bradford Safeguarding Children Board (BSCB) has developed a 9 Point Strategic Response to CSE which identifies the priorities agreed by all partner organisations working with children and families in the Bradford District. These priorities are:

- Our partnership response to CSE is child, young person and victim focused.
- Partners will develop and resource a multi agency co-located team which will work together to reduce the risk to victims and bring offenders to justice.
- A training plan will be developed for all professionals and leaders regarding CSE, in particular training and support for schools to identify to pupils and teachers the signs of being groomed for CSE.
- Communities will be assisted to deal with the impact of CSE.
- Support networks will be supported focusing on women and mothers.
- A specific direct work plan will be developed aimed at boys between 14 yrs and 17 yrs to tackle any unacceptable attitudes regarding the sexual abuse of any person.
- Partners will work together to develop responses and resources to address the impact of CSE in its varied manifestations across the District’s communities.
- A partnership response will be developed to reduce the opportunities for perpetrators of CSE to traffick and abuse children and young people through the use of all regulatory functions of the Council and its partners
- Our partnership response includes undertaking multi-agency historic investigations into CSE.

2.9 Organisations develop specific plans, consistent with their statutory responsibilities and local needs analyses, for recognising and responding to the impact of CSE. The 9 Point Strategic Response is periodically reviewed and the BSCB CSE and Missing Children Sub Group directly monitors those plans that are the responsibility of BSCB and holds partners to account for the progress of their individual agency plans for tackling CSE. A report will be provided in September 2016 to Council Executive regarding the 9 Point Strategic Response to CSE.

2.10 Key decisions made by the Council have demonstrated a strong commitment by elected members to ensuring that they and council officers make a full contribution to the District’s 9 Point Strategic Response. At the Full Council Meeting of 12th July 2016, members accepted the recommendation of the Governance and Audit Committee to amend the Members’ Code of Conduct to require all Members and Co-opted Members of Council to complete CSE training. BSCB is seeking assurance from the Council’s Member Development Manager who is charged with ensuring that all Members are able to fulfil this requirement.



- 2.11 A key responsibility of BSCB is to ensure that professionals learn from practice experience and that organisations make improvements based on that learning. BSCB has commissioned an independently led serious case review (SCR) into a particular case of CSE. This case is linked to the abuse of a girl by a group of adult men and one male who was a juvenile at the time of the offences. Twelve men were convicted of a number of offences linked to CSE and sentenced in January 2016. This SCR will be published when concluded. There are detailed action plans for all agencies which are based on the recommendations framed by the independently led panel for the review and the progress of agencies in relation to these actions will be monitored and tested by BSCB.
- 2.12 In addition to undertaking SCRs, BSCB carries out “Challenge Panels” in the course of which a number of cases are looked at in depth. The cases are selected with a theme in mind; some cases are chosen as it is acknowledged that they present particular difficulties for agencies, others are chosen from a random sample to provide an opportunity to view how other, similar, cases have been responded to. Panel members read and analyse multi-agency records regarding these cases and then receive presentations and ask questions of selected front line practitioners and first line managers who have been involved in the cases considered. The panel identifies improvements that can be made in procedures, practice, training and information for professionals across the safeguarding partnerships. Two challenge panels, on 5th December 2014 and 21st March 2016, have looked at the issue of CSE.
- 2.13 In 2016 Ofsted announced a new programme of multi agency inspection (Joint Targeted Area Inspection, JTAI) covering both the “Front Door” arrangements for social care, as well as an in depth look at an area of multi agency practice through a “Deep Dive”. The first of these themes was “CSE and Children Missing from home and care”. The BSCB coordinated a programme of preparation for inspection which was led by a high level Leadership Group chaired by the Director of Children’s Services as well as a JTAI Programme Board which undertook a self assessment and action planning process. The action plan arising from this work has been mapped to the 9 Point Strategic Plan and is being monitored through the CSE sub group of the Board, which is chaired by the Police.
- 2.14 The work of the Multi-Agency CSE Hub:**
The Bradford District multi-agency co-located CSE Hub is based in Sir Henry Mitchell House in central Bradford. It was established in early 2012 and has developed and grown since first becoming operational. The Hub also has responsibility for managing enquiries into and coordinating support for children who go missing. A number of Elected Members have visited the Hub to familiarise themselves with its operations. In April 2016, the staff physically located in the Hub was:
- Local Authority: Children’s Services team manager and two social workers, an Intelligence Officer and administrative support;
 - West Yorkshire Police: 12 officers, including specialist missing persons officers, detectives and a CSE Problem Solving Officer;



- Barnardo's Turnaround Service including a Service Manager, social workers, outreach workers, a "Night Time Economy" worker and administrative support;
 - A Nurse Practitioner to strengthen information sharing and operational links with Health Trusts.
- 2.15 Certain other agencies and services are not located in the Hub but attend regular meetings and are integral to the multi-agency response. These are:
- Children's Society "Hand in Hand" Service which provides support services to boys and girls in the Keighley and Airedale area;
 - Blast (Bradford and Leeds Against the Sex Trade) is a campaigning, training and support organisation for young men and boys experiencing CSE;
 - PACE (Parents against Child Exploitation) which provides support to parents and carers of children experiencing CSE; and
 - Local Authority education support services.
- 2.16 The Hub uses the West Yorkshire LSCB consortium safeguarding children procedures and the West Yorkshire CSE risk assessment tool. Each weekday the Hub staff meet to consider new and updated cases in order to provide a prompt response to new concerns. Risk assessment levels for each child known to the Hub are regularly reviewed.
- 2.17 Since the Hub came into existence, data has been collected regarding referrals and risk assessments in order to understand the incidence of recognised CSE in the District and the levels of risk identified for children known to the service. The characteristics, such as age, gender and ethnicity (as set out in appendix 1) of these children have been recorded and information has also been collated regarding persons identified as actual or suspected perpetrators of CSE.
- 2.18 At the time that the Hub was established it was anticipated that there would be a significant increase in the numbers of children in the Bradford District identified as being at risk of CSE and actually abused in this way. It was believed that this would result from a combination of improved awareness of CSE in communities and among professionals and also as a result of bringing to bear on the issue the dedicated focus and increasing expertise of the staff located in the Hub.
- 2.19 In the last report on this issue to this Committee (8th October 2015) it was reported that there had been 431 referrals to the Hub from 1st April 2014 – 31st March 2015. That report also stated that if the trend of the first four months of the 2015/16 year continued, there would be a year on year increase of 29% in referrals to the Hub during 2015/16. Final analysis of data for 2015/16 shows that there were in fact 713 cases referred to the Hub which is an increase of 65%. The reasons for this are better promotion of the work of the hub- training has been provided for large numbers of taxi drivers and staff across the children's work force; increased confidence in reporting and more information about CSE linked to campaigns such as the Police "Know the Signs" campaign. Confidence in reporting has been positively affected by high profile successful prosecutions.



- 2.20 Appendix 1 to this document is a detailed report which sets out the data sources used, provides a strategic overview of activity during 2015/16 and a tactical overview of the cases open to the Hub on a particular day (29th March 2016). The report also provides information about CSE crimes in the District, some analysis of the characteristics of offenders and information about locations of concern.
- 2.21 In March 2015 the government announced its intention to establish a national data set and performance measures in relation to CSE. These have not yet been published therefore it is not possible to benchmark performance in Bradford reliably with other LA areas or against national trends. However, all indications are that nationally the rate of recognition of CSE linked offences and identification of victims is increasing.
- 2.22 Key headlines from the appendix are:
- There is a continuing rise in the cases of potential or actual CSE that are referred to the Hub.
 - In the course of 2015/16 there was an average of 54 CSE referrals per month, compared to 36 per month the previous year.
 - 18% of CSE referrals to the Hub are for males.
 - The peak age for males referred to the Hub is 14 years, for females it is 15 years.
 - A break down of cases open on one day (29th March 2016) shows that 13% of cases were assessed as being at high risk, 42% at medium risk and 40% were low risk.
 - In the course of 2015/16, in the Bradford District, 109 crimes were recorded by West Yorkshire Police as “child sexual exploitation crimes”; this constitutes 20% of all sexual offences against children recorded in Bradford during that period.
 - 78% of identified offenders linked to CSE crimes are under the age of 36 while almost 60% are under the age of 25.
- 2.23 In order to illustrate the work of the CSE Hub, two anonymised case examples are provided for the Committee. These illustrate factors that can heighten a child’s risk assessment as well as factors that might increase a child’s resilience and therefore reduce the risk assessment. These short case studies provide some examples of the services that children might receive. In each instance it is clear that the risk to the child can go up and down in the course of their experience of CSE and in the course of receiving support services.
- 2.24 Child A was identified as being at risk of CSE when she was only 13 years of age, as a result of intelligence that she was receiving cigarettes in exchange for sexual activity. Initially, this child was resistant to all interventions that were offered and over time the risks increased and she was considered at very high risk of CSE. She was using cannabis daily, going missing from home, associating with much older males and had received treatment for sexually transmitted infections. The risks became so great that she was taken into care and was placed outside the Bradford District. Intensive work was undertaken by the local authority’s Placement Support team and Barnardo’s Turnaround project. Both services were persistent, despite



initially meeting with a lot of resistance from the child. Eventually this persistence paid off and she began to engage with services. She began to recognise and acknowledge the risks and harm that she had experienced. She recently returned to Bradford and is again living with her mother, still receiving a service from the Placement Support team. The most recent assessment has reduced her CSE risk to low because she is fully engaged in group work provided by the Turnaround service. She is the only child from the group to have attended every single session. She has not used cannabis recently and she has taken her GCSEs and has applied for further education courses.

2.25 Child B is a girl who has been known to the Hub for several years. She was living away from her family home with a much older male who was exploiting her. She was resistant to any support and would not engage with any service such was the impact of her victimisation. Many attempts were made to intervene with this child and she was placed in a foster home within Bradford. The quality of consistent care that she received at the foster home had a positive impact on the child. She was able to accept other support and gradually her risk assessment level reduced. However, the child then suffered bereavement and disengaged from the professionals who had been supporting her. She returned to her previous associates and the assessment of risk of CSE increased significantly. Over a period of time, the girl went through several cycles of engagement, followed by disengagement and increased risk as a consequence of emotionally difficult events. This young woman has now turned 18 and has begun to engage with agencies. She has a close relationship with her Turnaround worker and has undertaken video interviews with the police, who are working to gather evidence for prosecution of those who have abused her.

2.26 Multi-Agency Review of the CSE Hub:

Beginning in December 2015, BSCB undertook a partnership review of the working of the CSE Hub. This was led by the interim Assistant Director for Children's Services. The multi-agency group leading the review of the Hub met eleven times between 8th December 2015 and 9th June 2016. It included 8 agencies who considered the following issues:

- Current policies and procedures including pathways to services and the West Yorkshire risk assessment tool;
- Staffing levels, roles and responsibilities;
- The interface between children missing from home or care, CSE and the work of the Integrated Assessment Team;
- The interface between the local authority children's services long-term social work teams and the CSE Hub;
- Support for victims;
- Support for staff;
- Recording systems;
- Data analysis;
- Quality of practice;
- Work with communities.



- 2.27 The final report of the review of the Hub was accepted by BSCB in July 2016. The report resulted in the development of a detailed framework for professionals working with children who experience or are at risk of sexual exploitation. This is underpinned by revised detailed practice guidance for all agencies located in and working closely with the Hub. A detailed plan containing 18 actions to be delivered by specific services has been developed. Named agencies are accountable to BSCB, through the CSE and Missing Sub Group for the delivery of these actions and are required to provide evidence of impact. This impact will be tested through the BSCB programme of audit and challenge panels. A summary report of the work of the review can be accessed on the BSCB website: [http://www.bradford-scb.org.uk/cse/documents/\(FINAL\)%20CSE%20Hub%20REVIEW%20REPORT%20-%20May%202016.doc](http://www.bradford-scb.org.uk/cse/documents/(FINAL)%20CSE%20Hub%20REVIEW%20REPORT%20-%20May%202016.doc)
- 2.28 The review provides evidence of the necessity for clearer pathways into therapeutic services for children and adults who have experienced sexual exploitation. This is an issue highlighted in national reports as well as local work. A specific multi-agency group has been identified to map current therapeutic provision, to identify priorities for commissioning and to provide a future report for the Health and Well Being Board. In addition, the West Yorkshire Children's Services Directors, with support from the Office of the West Yorkshire Police and Crime Commissioner are leading work to develop a West Yorkshire wide approach to commissioning therapeutic support for victims of CSE.
- 2.29 The review demonstrated the importance of ensuring that all partners provide a high quality and prompt response to all incidents of children going missing from home or from care. Children who go missing may be vulnerable to a range of crimes and other forms of harm. However, there is strong evidence from national research that a very significant risk for such children is of CSE. There has been significant progress by the partnership to improve responses to children who go missing from home or care and it is noted that the Children's Services Overview & Scrutiny Committee plans to receive a report about this work.
- 2.30 Work with Perpetrators:**
West Yorkshire Police, supported by partners, invests considerable resource in gathering evidence to prosecute perpetrators of CSE offences. There have been a considerable number of prosecutions resulting from the work of the Hub, some of which have been detailed in earlier reports to this Committee and to the Council executive.
- 2.31 There are instances in which there is not an option to prosecute a suspected perpetrator, for example because there is insufficient evidence, in which case there would normally be no further action as a result of the investigation. In appendix 1 to this report, page 26, there is a table that sets out outcomes to criminal investigations including outcomes that result in no charge. Research and experience of offender management services indicates that without the option of an intervention to address offending behaviour there is a risk of escalating criminality. An option being piloted locally, with the support of the Community Safety Partnership, is the Insight Programme.



- 2.32 The ambition of the Insight Programme project is to place a greater emphasis on these offenders recognising the impact of their actions and the harm caused. The project is developing a bespoke programme which adapts the most appropriate intervention dependant on the assessment of the individual perpetrator. This will be based on their level of responsibility, remorse and motivation.
- 2.33 Perpetrators will be referred on to the Insight programme, as an intervention by the Police if the Police are unable to prosecute and the alternative is no further action. It can also be used for sentenced individuals to undertake as part of their Court order. The programme during the initial period will only focus on low and medium risk cases.
- 2.34 The Insight Programme will involve two Insight volunteer facilitators meeting with the individual to assess them and then to organise these individuals being involved in restorative meetings with those affected/involved by this type of crime. This will not be their direct victim/s. The individuals will have to attend the meeting and talk about what they have done and who has been affected. They will then listen to people, or hear through the use of varied materials, the potential consequences of such behaviour. The meeting will then look at what they will do to ensure that they are not involved in similar behaviour in the future. Attendance at these meetings will be recorded and referred to in the future should that individual be involved in any further CSE related behaviour. This will evidence that they are aware of the impact of their actions and it can be used as evidence of bad character.
- 2.35 The Corporate Overview & Scrutiny Committee received a detailed report regarding the Insight Programme on 3rd February 2016.
- 2.36 Preventative Work:**
Previous reports to this Committee have set out preventative initiatives being undertaken directly by partners or being commissioned by the local authority or the Community Safety Fund. In this report several specific areas of preventative work are highlighted, which support specific aspects of the 9 Point Strategic Response to CSE.
- 2.37 The local authority has previously commissioned an educative drama tour of the District's secondary schools highlighting the risk of CSE to year 10 students. For some time, partner agencies have wished to develop a similar, age appropriate product for primary school pupils who are approaching transition to secondary school. Some funding was provided by the West Yorkshire Police and Crime Commissioner (PCC) which has enabled BSCB to support the development of a play and supporting educative materials aimed at Primary School pupils. This play is entitled "Mr Shapeshifter" and highlights how children may be groomed and harmed through naive use of smart phones and other internet enabled devices.
- 2.38 Using the funding provided by the PCC it was possible to arrange a short tour of the play to 9 primary schools in the District and 8 performances have now been completed and evaluated. The feedback from the schools has been positive. A senior member of staff in one Bradford primary school stated:

"The children were keen to chat about [the play] afterwards. We had



good responses, it was definitely understood (I wasn't sure at first that it would be). The acting was very high quality and the pitch – superb for year 6”.

- 2.39 As a result of the positive evaluation of the 8 performances to date, funding is being sought for an initial tour of 60 – 90 Bradford District primary schools during the 2016/17 school year. The target audience for performances are year 6 pupils. The intention is that teachers will be provided with materials to prepare children for the performances and there will also be materials to support post – performance lessons. Staff from a range of support services: Safer Schools Officers, Turnaround, Blast or Hand in Hand staff would also be present at schools during and after performances to provide support to pupils and staff. A full evaluation of the impact of performances will be provided.
- 2.40 It is recognised both in Bradford and nationally that there are significant challenges for large organisations such as the local authority and the police service in effectively communicating with black and ethnic minority (BEM) communities about challenging issues such as CSE. It is recognised that in Bradford and elsewhere there has been an over representation, as convicted perpetrators of street grooming, of males of south Asian heritage, when compared to population data. It is also recognised that children and women of south Asian origin are disproportionately less likely to be recognised as victims of sexual exploitation. The report “Unheard Voices – Sexual Exploitation of Asian girls and Young Women” published by the Muslim Women’s Network in 2013 highlighted reasons for the under-recognition of Asian girls and women as victims of abuse.
- 2.41 Each organisation involved in the Hub is obliged to ensure that its procedures and guidance and training for staff improve equality of access to services. In addition, BSCB has been anxious to ensure that the commissioning options available to partners be exercised to provide focused support to BEM communities that are affected by CSE.
- 2.42 The Muslim Women’s Council (MWC), in conjunction with the Keighley Association Women and Children’s Centre (KAWACC), has successfully secured funding from partners outside Bradford to establish the “Fragile” project. This project has recruited skilled staff to work with women and girls in the BEM community to raise awareness of safeguarding issues, including CSE. Working individually and in groups, women and girls are provided with key information, including how to report concerns. Individual support is accessed for women and girls to support them through and after disclosure of concerns.
- 2.43 BSCB has supported a successful application by MWC and KAWACC for funding from the Community Safety Fund to recruit male staff to develop the Fragile model for work with men and boys in the BEM community. This project will work in partnership with other VCS organisations that are developing expertise in working with men and boys as potential perpetrators as well as potential victims of sexual exploitation.



- 2.44 BSCB has also supported a successful bid to the Community Safety Fund to maintain the Barnardo's "NightWatch" scheme with a specific focus on Bradford. The Department of Education had previously provided 12 month's funding for a West Yorkshire-wide scheme. A national evaluation of the first 12 month's operation is awaited. However, the tangible local impact of the scheme, not least the contribution to developing and delivering a programme of mandatory CSE training for private hire operators and drivers, led to BSCB making a bid for further funding, focused solely on the Bradford District.
- 2.45 The Barnardo's NightWatch initiative, which is funded by Bradford's Community Safety Partnership April 2016 – March 2017, aims to raise awareness of child sexual exploitation by offering advice, guidance, support and training to businesses, services and the general public.
- 2.46 NightWatch places particular emphasis on helping the night time economy to recognise, respond and report CSE and play a part in keeping children safe after dark.
- 2.47 The NightWatch Programme content includes exploration of the following themes:
- What is Child Sexual Exploitation?
 - CSE Multi-Agency Hub (who they are & what they do)
 - Grooming – Pattern of control
 - Consent
 - Identifying vulnerability and risk
 - Safeguarding - your role & responsibilities
 - Managing Risk
 - Reporting, recording and responding to concerns
- 2.48 The following case study is provided to illustrate the application of a range of interventions to drive up safeguarding standards in a licensed business, in this case an independent hotel.
- 2.49 The concern arose from information received into the CSE Hub from a member of the public regarding sightings of children accessing hotel premises during the night time hours. Following an initial visit to the hotel by the Police CSE Problem Solving Officer, a recommendation was made for hotel employees to undertake NightWatch CSE awareness training in order to raise the standard of safeguarding practices within the premises. Five hotel employees took part in the 2.5hr training session which included the Hotel Owner, Senior Duty Manager, Night Manager, Night Porters and Receptionist/Housekeeping Manager. The session highlighted the concerns received by the CSE Hub, allowed the staff team to develop risk management policies and practices to eliminate further concern/risk.
- 2.50 Initial evaluation of the training indicated that participants had moved from feeling 'slightly confident' to 'very confident' with regards to what CSE means, who it affects, recognising the signs and understanding the role they can play in helping to keep children and young people safe. Four participants said that they would 'do something differently' with regards to their professional practice as a result of the training, One participant said that they felt that they were already considering



safeguarding within their practice and that they would continue to do this. All participants said that they had found the training beneficial both in a professional and personal capacity.

- 2.51 In order to assess the impact of the training on the safeguarding practice of the business, a number of post training visits were carried out by the Police CSE Problem Solving Officer. Evidence of practice and policy change was provided and no further concerns have been raised regarding the location following this intervention.
- 2.52 The CSE report to this Committee in October 2015 referred to the ambitious programme to train Private Hire and Hackney drivers and operators to recognise the risk indicators of CSE and to respond appropriately. Private Hire and Hackney Carriage operators in the Bradford District have been expected to undertake safeguarding training for several years. Since January 2015 a specific module on CSE must also be completed. More than 3500 drivers and operators have now been trained and the training is mandatory for all new license applicants and applicants for license renewals.
- 2.53 In June 2015 all operators were written to regarding CSE and were provided with copies of poster and leaflets about the issue. The operators are requested to:
- Display the CSE poster in their base for both the public and staff to see.
 - Issue the CSE Do's & Don'ts leaflet to each of their licensed drivers for retention in their vehicle.
 - Check that drivers understand the content of the leaflet, are aware it must be retained in their vehicle and know what to do if they suspect a CSE issue.
 - Keep a record of the drivers that are issued with the CSE Do's and Don'ts leaflet. This must include their badge number, date of birth, name and signature of receipt.
- 2.54 Each of these requirements is now routinely checked by Council licensing officers and partners.
- 2.55 Barnardo's has been commissioned by the Council to deliver a number of preventative group programmes to parents and carers of children where concerns in relation to CSE have been identified. These sessions were subsequently evaluated by a Bradford University academic. The second stage of the project has been for Barnardo's Turnaround, with assistance from national experts, to produce a CSE "Parenting Education Pack". The CSE Parenting Education Pack is a resource that addresses the gap in current service provision to help parents participate and contribute to the safety and protection of their children and teenagers from CSE. The resource gives parents an understanding of CSE; who are the victims/perpetrators (breaking down stereotypes). It also addresses teenage brain development and explores questions such as: "why teenagers take risks"? The pack also explains the 'grooming process' and the effects that this can have on relationships and gives tips on how parents and carers can enable children to be safe online and when using mobile phones and other internet enabled technology.



2.56 Work in relation to Non-Recent Sexual Exploitation:

In this report the term “non recent sexual exploitation” is used to describe investigations into cases that may have occurred more than one year and one day prior to the investigation commencing. Such cases are sometimes referred to as “historical”. It is acknowledged that while offences may be “non-recent” the consequences for the victim are current and on-going. An integral part of the District’s response to non-recent sexual exploitation is the work of social workers, health staff and other providers of therapeutic services to assist survivors in dealing with the consequences of the abuse that they have suffered.

2.57 West Yorkshire Police and Bradford Council have developed a partnership response to the issue of historic CSE concerns. A specialist team has been established, known as “Operation Dalesway”, set up in October 2014. Currently this consists of a police inspector, two Detective Sergeants, six Detective Constables, eleven civilian investigators, two police analytical officers, two police Prosecution Team Officers, two social workers (one children’s services specialist and one adult services specialist) and a council researcher. Staffing levels for this service are being kept under review. The service has clear terms of reference which have been agreed by partner organisations.

2.58 There are 12 ongoing investigations. 10 of the victims are previously looked after children. 28 arrests have been carried out and 18 people are on bail. The Crown Prosecution Service is conducting reviews on a number of these cases. 127 potential victims have been identified and interviewed. A number have made allegations of sexual and physical assault. Whilst some of the suspects are confirmed dead, 2 have been arrested and are on bail for sexual offences. The enquiry team is taking steps to identify and trace other suspects.

3. OTHER CONSIDERATIONS

3.1 None

4. FINANCIAL & RESOURCE APPRAISAL

4.1 The CSE cases requiring social work allocation are included in the normal case loads for social workers working in the Children Specialist Services. In addition to spend on social work teams, Childrens Services currently spends approximately £2.9m on children prevention and support services. Children Services has made resources available from within existing budgets by allocating a team manager, social workers, and a community resource worker to operate within the CSE multi agency Hub.

4.2 When looked after children at risk of CSE require specialist provision this is purchased at a weekly cost of £2000 per week for a residential bed (£104,000 a year), rising to £5000 per week (£260,000 per annum) for a secure placement. There are approximately 10-15 young people who require this specialist resource at any given time.



4.3 Bradford Safeguarding Children Board (BSCB) sets the procedural framework for all partnership work to keep children safe in the District. This includes keeping children safe from CSE. In addition to this statutory duty, BSCB also has statutory responsibility for ensuring that staff receive multi-agency training to support them in their work, and has statutory responsibility for ensuring that agencies are held to account for their work and that there is a learning and improvement framework in place to ensure that serious case reviews and other challenge and learning processes are effective. A further statutory responsibility is the conduct of a multiagency review of every child death in the District, carried out by the Child Death Overview Panel. In addition, BSCB plays a role in supporting and planning innovative partnership responses to safeguarding children challenges, such as the establishment of the multi-agency CSE Hub.

4.4 The staffing resource for BSCB is:

- Manager
- Administrator
- Learning and development coordinator
- Learning and development administrator
- Performance and information officer
- Child death reviews manager
- Safeguarding in faith settings worker
- Child Accident reduction coordinator (part time).

In addition, BSCB currently employs an interim deputy manager pending recruitment of a permanent post holder.

4.5 The BSCB staffing and operational funding is provided by a pooled budget totalling £388,840 and a small income generated by charging commercial organisations for safeguarding training. The contributors to this pooled budget are:

- Bradford Council Children's Services £217,700
- Health £148,350
- Police £17,535
- Probation £4,690
- Cafcass £550

4.6 The Council and Bradford Safeguarding Children Board have been successful in securing some additional funding from the West Yorkshire Police and Crime Commissioner to strengthen the District's response to CSE:

- In March 2016 Bradford Council appointed a full time information and data analysis officer to work within the Hub. The first 18 months of this appointment are funded by the Office of the West Yorkshire Police and Crime Commissioner. At the conclusion of this initial funding agreement, it is expected that the local authority will take steps to continue the funding of this post from base budget.
- The PCC provided funding for further preventative work in schools which in Bradford was used to develop and tour a primary school play regarding CSE and related issues of child safety, as described in paragraphs 2.28 – 2.29, above.



- 4.7 Successful applications to the Community Safety Fund (a fund which is delegated to each West Yorkshire local authority area by the Office of the Police and Crime Commissioner) support the work of:
- The Barnardo's Night Time Economy Worker;
 - The Fragile project work with men and boys.

5. RISK MANAGEMENT AND GOVERNANCE ISSUES

5.1 The protection of children and vulnerable adults is the highest priority for the Council and its partners when considering the implications of CSE, as is the provision of services to support those who are victims of this abuse. Failure to protect and provide appropriate services significantly increases the risk to children in the District. It would also lead to significantly reduced public confidence in Bradford Council, West Yorkshire Police and other partners, as has been demonstrated in some other Districts.

5.2 Failure to implement the proposed recommendations may increase these risks

6. LEGAL APPRAISAL

6.1 The report has been considered by the office of the City Solicitor and there are no identified legal issues to highlight.

7. OTHER IMPLICATIONS

7.1 EQUALITY & DIVERSITY

7.2 Child sexual exploitation (CSE) is a crime committed by predominantly male perpetrators from all different racial backgrounds. Victims of CSE also come from all backgrounds and ethnicities. Nevertheless, local experience and national research indicates that recognised victims and perpetrators do not necessarily reflect the gender ethnicity and other characteristics of the District's population.

7.3 18% of the identified children experiencing or at risk of CSE in the Bradford District during 2015/16 were male. There is considerable national research to suggest that this is an under-representation. Services in Bradford work closely with Blast to deliver training and to challenge perceptions and practices that might make it less likely that a boy would be recognised as at risk of CSE compared to a girl.

7.4 Some steps to address the under-representation of BEM children among those referred to the Hub are addressed in paragraphs 2.31 – 2.34, above. Analysis of cases open to the Hub on 29th March 2016 (see appendix 1) shows that 68% of open cases were of white British heritage, while 12% were of Asian heritage. Compared to the District's under 18 population, this represents an over representation of white British children and an under representation of Asian children.



7.5 The tactical overview contained in appendix 1 does not provide a full breakdown of the ethnicity of CSE offenders and suspects. The CSE Hub intelligence Officer will work with West Yorkshire Police and Court Services to try to ensure that such a breakdown is available for future reports. Public records demonstrate that there is an over-representation of men of Asian origin among those prosecuted for “street grooming” offences related to CSE. Research, such as that undertaken by the Office of the Children’s Commissioner, also reports this over representation: “Inquiry into Child Sexual Exploitation by Gangs and Groups” (3 reports and 3 additional documents, Office of the Children’s commissioner for England, 20122 – 2013) <http://www.childrenscommissioner.gov.uk/info/csegg1>

7.6 SUSTAINABILITY IMPLICATIONS

None.

7.7 GREENHOUSE GAS EMISSIONS IMPACTS

None.

7.8 COMMUNITY SAFETY IMPLICATIONS

7.8.1 Child Sexual Exploitation (CSE) is violent criminal activity. The consequences of CSE can be long-standing for the victim and there is growing research evidence that victims of CSE are themselves over-represented among young people coming to the attention of police services as potential offenders. In addition, CSE has lasting consequences for families of victims and perpetrators and has potential implications for community relations.

7.8.2 The Community Safety Partnership (CSP) has received a presentation about CSE delivered by the BSCB CSE Champion and the Assistant Director for Specialist Children’s Services. The CSP is currently considering options pass porting Police and Crime Commissioner funding to 6 key priorities, including CSE. BSCB is the lead organisation for developing these options in conjunction with the CSP.

7.9 HUMAN RIGHTS ACT

7.9.1 Child Sexual Exploitation is a violation of the rights of the child under the Human Rights Act. The arrangements made by the Council and its partners are intended to prevent the rights of the child being violated in this way.

7.10 TRADE UNION

There are no implications for Trade Unions.



7.11 WARD IMPLICATIONS

7.11.1 It is recommended that each Area Committee receives an update report regarding CSE in the next 6 months.

7.12 AREA COMMITTEE ACTION PLAN IMPLICATIONS (for reports to Area Committees only)

None.

8. NOT FOR PUBLICATION DOCUMENTS

None.

9. OPTIONS

This report is tabled for information and discussion.

10. RECOMMENDATIONS

- The Corporate Overview and Scrutiny Committee is invited to note the contents of this report.
- A further report be presented in 12 months.

11. APPENDICES

- Appendix 1: “The CSE Hub – Date and Statistics prepared by Danielle Williams, Bradford CSE Hub Intelligence Officer.

12. BACKGROUND DOCUMENTS

- Report of the Multi Agency Review of Bradford’s Child Sexual Exploitation Hub (May 2016): [http://www.bradford-scb.org.uk/cse/documents/\(FINAL\)%20CSE%20Hub%20REVIEW%20REPORT%20-%20May%202016.doc](http://www.bradford-scb.org.uk/cse/documents/(FINAL)%20CSE%20Hub%20REVIEW%20REPORT%20-%20May%202016.doc)
- “Safeguarding Children and Young People from Sexual Exploitation, supplementary guidance to Working Together to Safeguard Children” (DCSF 2009)
http://westyorkscb.proceduresonline.com/pdfs/dcsf_safegch_yp_sex_exp.pdf
- “The Independent Inquiry into Child Sexual Abuse”: <https://www.iicsa.org.uk/>



- “Unheard Voices – Sexual Exploitation of Asian girls and young women”; author – Shaista Gohir; published by Muslim Women’s Network UK (2013).
- “Inquiry into Child Sexual Exploitation by Gangs and Groups” (3 reports and 3 additional documents, Office of the Children’s commissioner for England, 2012 – 2013) <http://www.childrenscommissioner.gov.uk/info/csegg1>



Appendix 1

The CSE Hub – Data and Statistics

Provided by Danielle Williams, Intelligence Officer, Bradford CSE Hub

Data sources

Several datasets have been used to compile this data. The Strategic Overview section uses data gathered from LCS, the database used by Children's Social Care. This dataset contains all CSE episodes that have been open at some point between 1st April 2015 and 31st March 2016 to give a strategic overview of all referrals to the CSE Hub. The tactical dataset is a list of all open cases to the CSE Hub on the 29th March 2016 to give a tactical perspective to the same time period. This is necessary because the dataset is constantly changing on a daily basis as new children are referred in or are closed to the Hub once their risks have been reduced. A crime dataset is taken from West Yorkshire Police's crime recording system and contains all sexual offences committed against a victim who was under the age of 18 at the time of the offence and was committed between 1st April 2015 and the 31st May 2016.

Strategic Overview

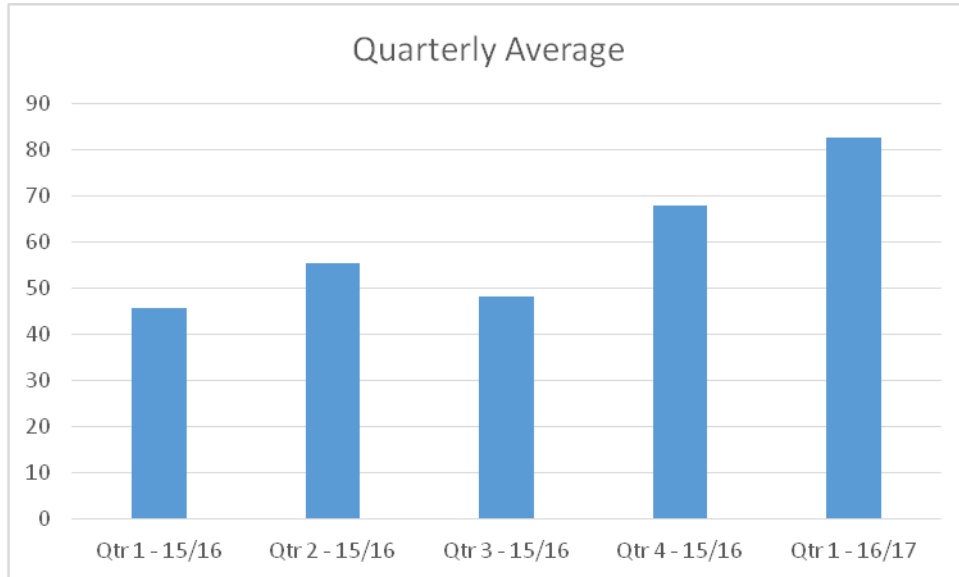
When a concern is raised with the CSE Hub that a child may be involved in child sexual exploitation a "CSE Episode" is created on LCS by Children's Social Care. The partnership then research each of their systems to gather as much information about the child as possible and this is then discussed at the daily CSE Meeting. This meeting assesses the information and decides whether there is a CSE risk to that child. Each of these discussions, no matter what the outcome, is recorded on LCS by way of a CSE Episode. This will then show that a referral has been made even though in some cases the partnership may consider that there is no CSE risk to a particular child. The raised awareness of CSE within the professional environment and the "know the signs" public campaign, which is a CSE public information campaign delivered by West Yorkshire Police with the support of all five West Yorkshire Local Safeguarding Children Boards, has resulted in a much better awareness of CSE and this has increased the number of referrals being made.

Over the 2015/16 financial year there were 713 cases dealt with by the CSE Hub. Of these 63 were already open on the 1st April and were ongoing cases at that time. Of these referrals 217 (30%) were not identified as at risk of CSE at the time of the referral. There were 569 individual children referred to the CSE Hub and 106 of these children were referred on more than one occasion. A child may have been referred more than once for many different reasons. For example, a child might be referred and at that time may not be considered to be at risk of CSE. The information and the rationale for the decision as to their risk level will be recorded on the database. However, at a later date more information may come to light about that same child triggering a second CSE episode. If at this point the child is considered to be at risk of CSE the episode will remain open and all interventions to reduce the risk will be recorded on the CSE episode. Each case will be regularly reviewed and any changes of risk level are discussed at a multi-agency meeting each Thursday.

The Report of the Strategic Director of Children's Services to the meeting of Council



Executive held on the 15th September 2015 on the subject of the arrangements by the council and its partners to tackle child sexual exploitation states that between 1st April 2014 and 31st March 2015 there were a total of 431 referrals to the CSE Hub. In the following 12 months there were 713 which is an increase of 65%. Last year's report stated that if the trend from the first four months of the 2015/16 year continued there would be an increase of 29% over the year. In the 2014/15 year there was an average of 36 referrals per month but in the year 2015/16 there was an average of 54 referrals per month. An analysis of the referrals made by quarter shows an ever increasing rate of referrals to the CSE Hub as shown in the chart below.

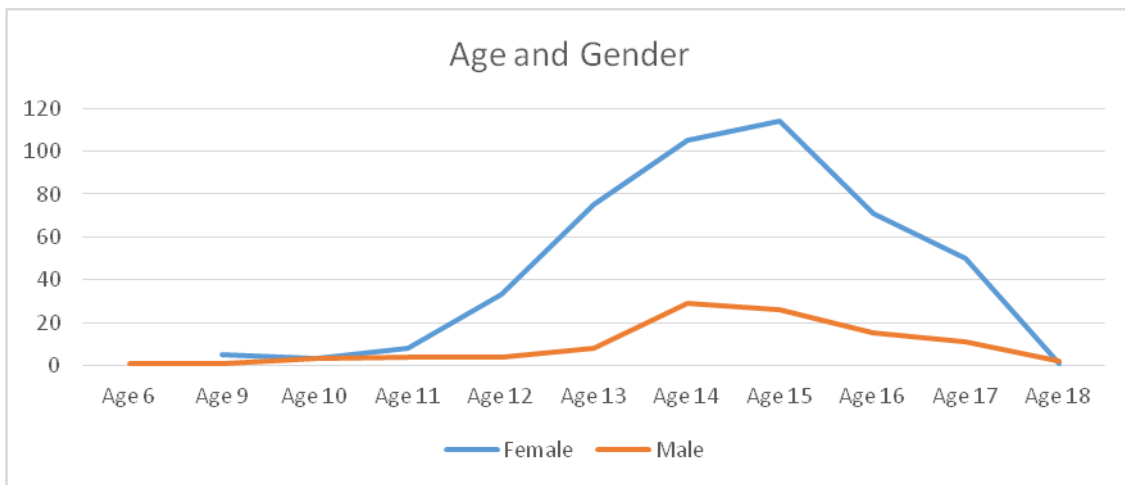


Individuals Referred

Of the referrals made to the CSE Hub 18% were for male children and 82% were female. This shows that the risk of CSE is being recognised for male children in Bradford despite the many barriers to identification of male victims. Our partners from BLAST point out that many boys would much rather be seen as, and categorised by statutory agencies as, being involved in crime, drugs and anti-social behaviour than as a victim of child sexual exploitation. The dataset has been drawn from the children's social care system but the gender split for children who are recorded as victims of CSE Crimes gives a different picture. From the crime dataset it is possible to say that only 8% of the victims of CSE crimes are male. This shows that whilst male children might not be disclosing offences committed against them the risk to them is still being identified and offered support. The same gender split is seen in adult victims of crime. During the same time period 9% of adult victims of reported sexual crimes were male.

The peak age for referrals is 14 and 15 years old and there is little gender difference. The peak age for females is 15 and for males it is 14.





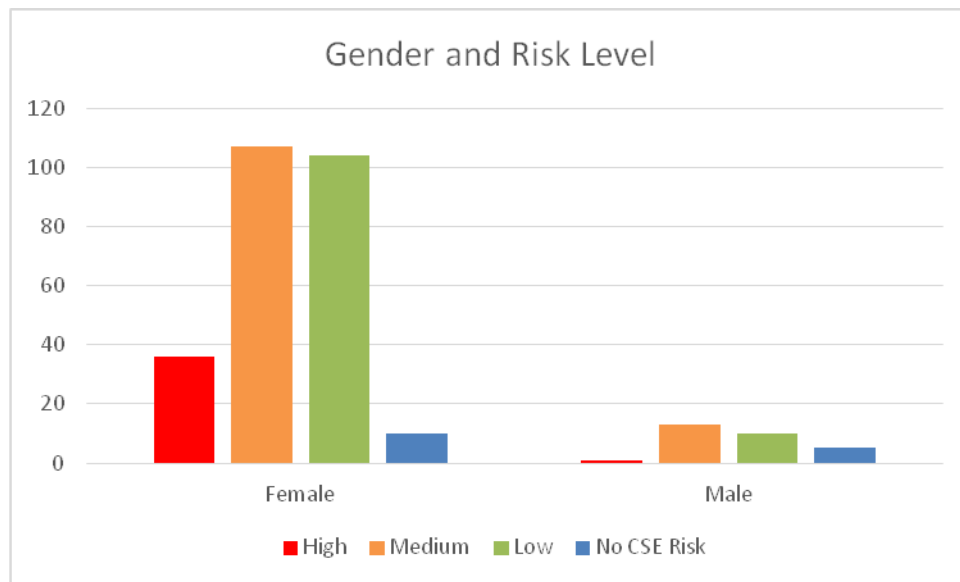
Tactical Overview

Of the referrals made above there are 288 children who were open to the CSE Hub on the 29th March 2016. Open cases change on a daily basis so this dataset represents the number of cases on that specific day. Each day there is a morning CSE Hub meeting where new assessments, missing from homes and new intelligence are discussed by all partners. This is an effective way of data sharing and ensures that all staff are aware of new intelligence. For risk assessments this means that information from all partners can be discussed and a rounded view of the risk to each child is obtained. For each child that is discussed a CSE Episode is opened on the children's social care system LCS. The notes from the discussion are recorded and the risk level recorded. Where a child is not considered to be at risk of CSE the episode will be closed straight away. The assessment process gathers a wealth of information about a child and may identify other risks for which the appropriate referral will be made. An assessment of No CSE Risk does not mean that a child has no risks at all, just that the risks identified are not CSE risks specifically.

On this date there were 288 open cases in the CSE Hub. Of these 13% were considered to be at High Risk, 42% were considered Medium Risk and 40% were Low Risk. A further 5% were assessed and considered not to be at risk of Child Sexual Exploitation.

At this time 10% of open cases were male children and of these 41% were considered medium risk and 39% were low risk. Only one male child was considered to be a high risk of CSE. As can be seen from the chart below there are some cases where the risk level is not set.





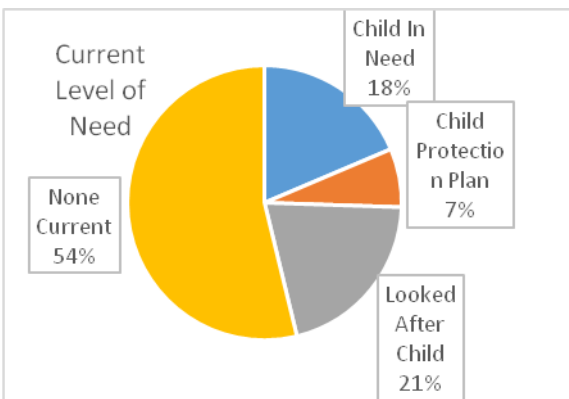
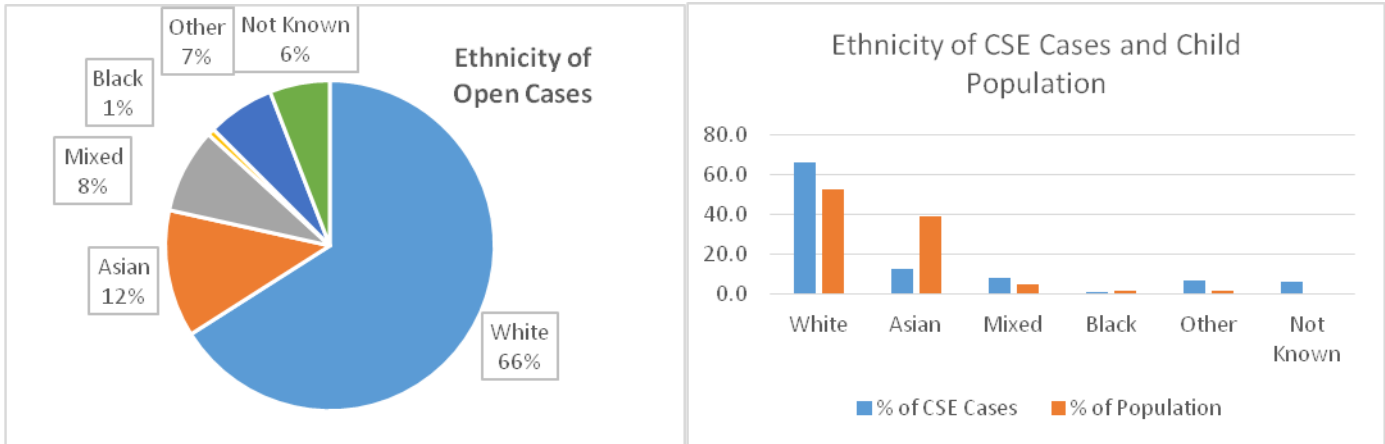
When a risk level is set a review date is also set dependent on the level of risk. Higher risk cases are reviewed more regularly than lower risk children. Risk levels are also reviewed if new information comes to light or there is a significant event in a child's life that could change their risk level. As such, risk levels are fluid. A second dataset of cases open to the CSE Hub on the 1st August 2016 has been obtained and the current risk level looked up. This shows that for 71% of the children open on the 29th March the risk level remains unchanged. Of the 288 children, 21% have had their risk level decreased over the following four months and 8% of the children have seen their risk level increased. There are 49 children who are now no longer open to the CSE Hub suggesting their risks have now been mitigated. Of the 37 high risk cases ten have had their risk reduced, 8 to medium and two have been closed to the CSE Hub. Ten of the children who were Medium on the 29th March are now considered high risk and 12 children have had their risk level increased from Low risk.

	Risk Level 29th March 2016	Risk Level 1 st August 2016			
		1. High	2. Medium	3. Low	4. Closed
1. High	37	27	8		2
2. Medium	120	10	80	20	10
3. Low	114	4	8	81	21
4. No CSE Risk	17			1	16
Grand Total	288	41	96	102	49

The child population of Bradford is ethnically diverse. 53% of the child population is classified as White in the 2011 Census and 39% as Asian. Five percent of the child population is of mixed heritage and very small percentages are classed as Other or Black. The ethnicity of children open to the CSE Hub shows that 66% are White, 12% are Asian and 8% are Mixed heritage children. However, within the children open to the CSE Hub there is an element of unknown ethnicity which is not present in the Census data. The 7% of children classed as "Other" consist of 17 children who are classed as Gypsy/Roma and two other children who are simply classed as Other with no further ethnicity descriptors.



Only 1.7% of the child population of Bradford is classed as Other in the 2011 census so this group is over represented in the cohort of open CSE cases. At present there is not enough data to understand why there might be this discrepancy between the ethnicity of the child population of Bradford and the ethnicity of the cases open to the Hub. Going forward there increasing is emphasis on the voice of the child and part of this will consider the best way to engage with children at risk of CSE and hopefully inform how engagement with hard to reach communities can improve.

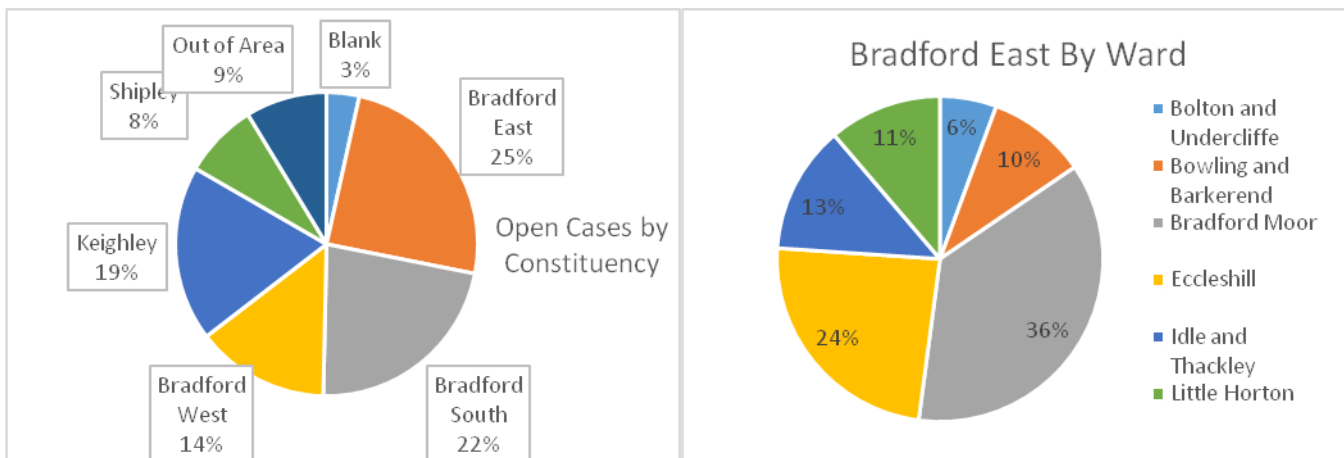


The data contains information on each child that states whether they are currently, have been previously, or have never been a child in need, subject to a child protection plan or looked after. Almost 50% of the children open to the CSE Hub on the 29th March 2016 are identified as currently either child in need, subject to a child protection plan or are looked after children. There are 96 children (32%) who have never been classified as a child in need, been subject to a CP Plan or been a looked after child. Of these 96 children one is considered High Risk of CSE, 38 are considered Medium Risk and 46 are Low risk, 11 were found not to

be at risk of CSE. The high risk child was not CIN, CP or LAC at the time of the referral into the CSE Hub but the level of risk identified during this referral initiated a full assessment that did result in the child exceeding the threshold for children’s social care. All the medium risk cases that did not meet the threshold for CIN, CP or LAC have been referred on to our partners in Turnaround, Hand in Hand or BLAST. Within the dataset there are 37 children considered as High Risk of CSE and of these 21 (56%) are currently looked after children, a further two were previously looked after. Six of the high risk children are subject to a child protection plan and nine are classified as children in need.

Using the home postcode of the children open to the CSE Hub it can be shown that 25% of the open cases live in the Bradford East constituency. The graph below shows that there are 9% of children who are in out of area placements. These are all children who are looked after by Bradford Children’s Social Care but have been placed outside of the district. All of these children are at high risk of CSE. There are also 3% of records that are Blank in the constituency field. These are all children that have records that are confidential on LCS.





A list of wards that contain more than ten children and their risk level is produced below. There are children at risk of CSE in all wards across Bradford but to prevent children being identified the numbers have not been included here.

Ward	High	Medium	Low	No CSE Risk	Total	%
Bradford Moor		17	8	1	26	9.03
Out of Area	13	2	7	3	25	8.68
Keighley West		8	10	1	19	6.60
Tong	1	11	6		18	6.25
Eccleshill	3	6	7	1	17	5.90
Royds	1	4	6	2	13	4.51
Wyke	2	4	4	2	12	4.17
Clayton and Fairweather Green	1	5	6		12	4.17
Wibsey		6	4		10	3.47
Great Horton	1	3	5	1	10	3.47
Keighley Central		4	5	1	10	3.47

Child Sexual Exploitation Crimes

Between the 1st April 2015 and the 31st March 2016 there were 531 sexual offences committed in Bradford against children who were under the age of 18 at the time the offence was committed. Of these crimes 109 (20%) were recorded as child sexual exploitation crimes.

The Home Office sets out National Crime Recording Standards for crimes to ensure that all police forces are working to the same definitions of offences and this allows national data to be gathered and forced compared. Each crime type is given a Home Office Code that describes the type of offence. For example, a dwelling burglary is classified under Home Office Code 28 and a burglary in a building other than a dwelling is classified as a Home Office Code 30. As such sexual offences have many Home Office Codes depending on the offence committed. There is no single Home Office code for child sexual exploitation because a CSE offence might be classified as many different offences



depending on the circumstances of the offence. West Yorkshire Police have had to devise a way of identifying if a crime is a CSE offence and have implemented a tagging system whereby a “child sex exploitation” tag can be added to a crime within the Hate Crime Classification field of the database.

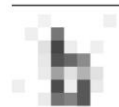
Crime Outcomes, Offenders and Suspects

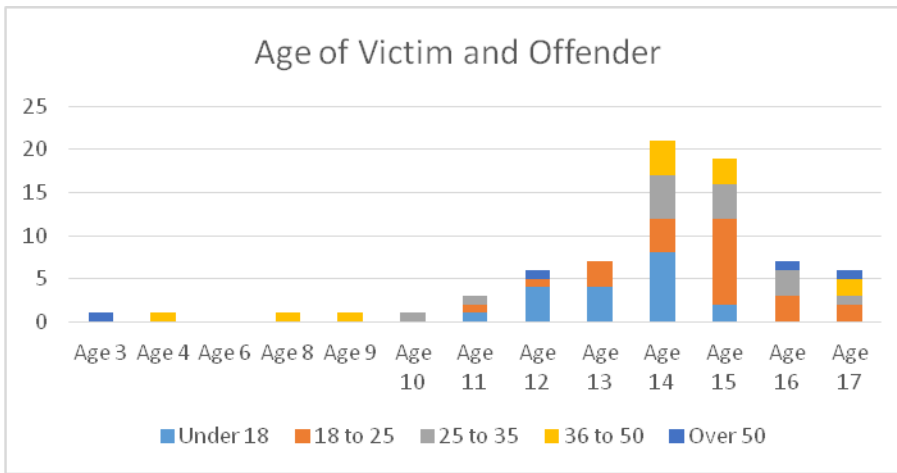
There are 41 (38%) CSE Crimes that are still being investigated and 66 (60%) that are finalised. Of these 109 offences there are 75 (69%) where an offender or suspect has been identified for the offence. There are 103 suspects identified as linked to 75 crimes within this dataset which means that there are 16 crimes that have more than one suspect linked to them. There are 8 offences with two suspects linked to them, seven with three suspects linked to them and one where there are seven suspects linked to the crime. There are only 14 offences where the investigation has been completed and no suspect has been identified.

Outcome	Total	%
10 POLICE NFA PUBLIC INTEREST	2	1.8
14 SUSPECT NOT ID - VICTIM DECLINES OR UNABLE	5	4.6
15A POLICE DECISION - SUSPECT ID - EVIDENTIAL DIFFICULTIES	25	22.9
16 SUSPECT ID - VICTIM REFUSES TO SUPPORT PROSECUTION	12	11.0
18 NO SUSPECT ID - INVESTIGATION COMPLETE	14	12.8
1A CHARGED	7	6.4
8B COMMUNITY RESOLUTION WITHOUT RESTORATIVE JUSTICE	1	0.9
NB NO CRIME	2	1.8
NEW	41	37.6
Grand Total	109	

Where an offender has been charged it is not possible to state whether they were convicted as court as the Police do not hold this information. The role of the police is to gather evidence and bring a suspect to court to face justice. It is the role of the Crown Prosecution Service to prove that the suspect is guilty of the crime they are accused of committing. Questions regarding conviction rates for any offences should be directed at the Crown Prosecution Service or Her Majesty’s Courts Service.

In terms of age the majority (78%) of offenders were under the age of 36 and almost 60% were under the age of 25. The offenders who were under the age of 25 offended against children who were between 11 and 17 years old. One quarter of identified offenders were under the age of 18 and the victims for this age group were between 11 and 15 years of age. This suggests that the younger the victim the older the offender and that when children are in their teenage years are being offended against by offenders who are under the age of 35.





NB The age along the X axis is the age of the victim, the Y axis is the number of cases and the bars show the age of the offender.

There are five female offenders within this dataset but three of these crimes involve two underage parties sharing indecent images of

children (themselves) with other children. When this occurs crime recording rules dictate that two crimes must be recorded to show both children equally as victims and offenders. Another crime with a female offender crime relates to sexual intercourse between an 18 year old female and a 14 year old male who were in an age inappropriate relationship.

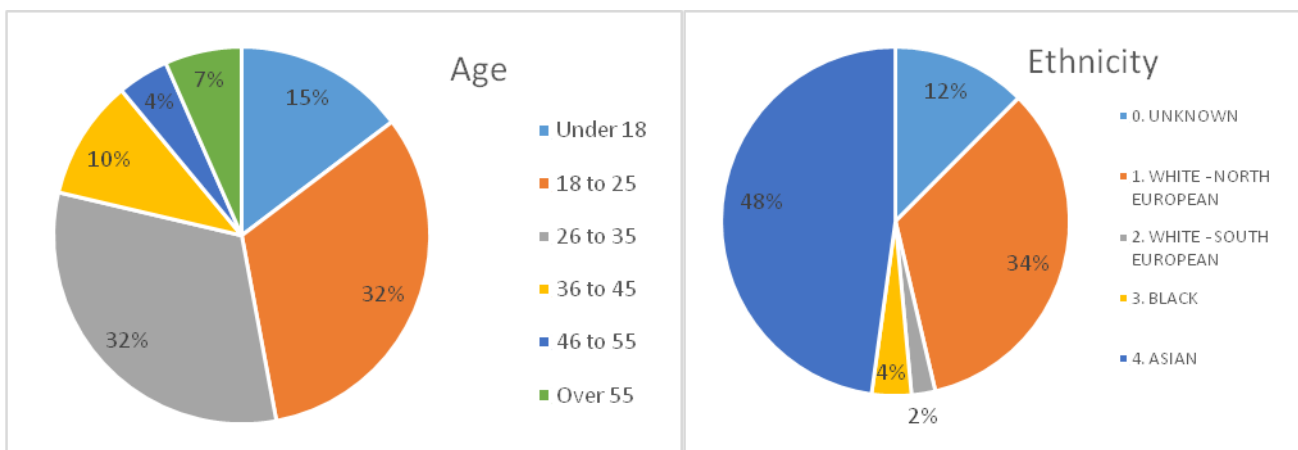
Suspect Management

Within the CSE Hub there is a dedicated police officer who is tasked with management of suspected perpetrators of CSE. When information is received into the Hub that someone may be involved in perpetrating CSE the information is evaluated and a risk assessment of the individual is made based on all information held on the individual by all member of the partnership. The risk that person presents is categorised as either high, medium, low or unsubstantiated and actions are undertaken that are proportionate given the risk level which is reviewed on a regular basis. Between 1st July 2015 and 30th June 2016 there were 135 CSE suspect management occurrences created on Niche and of these 126 were under investigation at the end of the same date period.

Those suspects with a higher levels of risk are most intensively managed and there is a team of officers tasked with visiting and monitoring offenders. The priority with high risk suspects is always to collect evidence to prosecute that individual or to use civil orders to curtail that person's offending behaviour. Medium and lower risk suspects are visited by officers and issued with a warning letter to say that they are being monitored by the police and follow up visits are undertaken to identify disruption opportunities and to engage the suspect in order to better understand the risk they present. It is important to build relationships with offenders so that officers can better assess their risk by exploring the intelligence that has been received. In some cases visits have resulted in a suspect's risk being reduced and in others has resulted in their risk being heightened.

In line with what is known from the crime dataset, almost 80% the suspect management occurrences relate to suspects who are aged 35 or younger and just over ten per cent are older than 45. Fifteen per cent of suspects are under the age of 18 and therefore are children themselves. There are 11 female suspects that are currently being managed, accounting for 8% of the total. In terms of ethnicity 48% of suspects have their ethnicity recorded as Asian and 36% have their ethnicity recorded as White. In 12% of cases the ethnicity is not recorded.





Locations of Concern

There are generally three types of locations that cause concern around CSE. Those that are vulnerable to CSE because they are places where people, including children, naturally congregate and socialise and those where the custodians of the premises may be unknowing of the signs of CSE and this may make their premises vulnerable to perpetrators using their facilities to perpetrate crimes. There are also those where the custodians of the premises are criminally complicit in the commission of CSE offences. The police aim to work in partnership with businesses to improve their understanding of the signs of CSE and give advice on actions they can take to improve the safeguarding of children within their premises. This is to ensure that businesses are run lawfully and safely and that children in the district can enjoy leisure activities in a safe environment.

The CSE Problem Solver works closely with Barnardo's to deliver the NightWatch scheme to businesses that operate within the night time economy. This programme is a training package delivered by Barnardo's with police support to all the staff who work in the premises. The objectives are to give the participants the knowledge to recognise the signs of CSE and understand how to report their concerns and safeguard children using their premises. The programme has been delivered to hotels, bars and snooker halls within the Bradford district.

Where there are concerns that a business may be facilitating the commission of CSE within their premises every legislative or regulatory opportunity is taken to reduce the risk and enforce better practices. Examples of this are extensive work undertaken with several hotels to increase their knowledge of the signs of CSE, improve their processes to ensure they know who is staying in each room and that identification is requested and copied for each person staying.

