

Report of the Chief Executive Office to the meeting of the Health and Social Care Overview and Scrutiny Committee to be held on Wednesday 6th of December 2023

Q

Subject: Bradford Safeguarding Adult Board Annual Report 2022/23

Summary statement:

The Bradford Safeguarding Adult Board's annual report for 2022-2023 outlines the activities carried out by the Board and its partner agencies to protect vulnerable adults from abuse and neglect. The report covers a range of areas, including efforts to improve outcomes for at-risk adults, case reviews, safeguarding training, performance quality assurance, and progress against priorities. By providing a transparent assessment of multi-agency safeguarding activity, the report aims to demonstrate the strength of the safeguarding arrangements in the Bradford District. The report is presented on behalf of the three statutory safeguarding partners, the Local Authority, West Yorkshire Police, and Integrated Care Board (ICB), who are jointly responsible for the safeguarding partnership arrangements.

EQUALITY & DIVERSITY:

The Bradford Safeguarding Adults Board's annual report for 2022-2023 demonstrates a strong commitment to promoting equality and diversity in its services. The Board emphasises person-centred care, empowerment, and collaboration, likely positively impacting equality and diversity. The Board's initiatives to improve multi-agency working and training are expected to ensure that adults at risk receive consistent and high-quality support, regardless of the agency providing the service. Although the report does not explicitly state whether the work presented contributes to one of the Council's equality objectives, the Board's focus on social inclusion and addressing discrimination aligns with broader equality objectives.

Iain MacBeath
Strategic Director

Portfolio:

Healthy People and Places

Report Contact: Darren Minton / Helen Khan
Business Unit Manager / Deputy Manager
Phone: (01274) 434361
E-mail: darren.minton@bradford.gov.uk

Overview & Scrutiny Area:

Health and Social Care

1. SUMMARY

- 1.1 The Bradford Safeguarding Adult Board's annual report for 2022-2023 outlines the activities carried out by the Board and its partner agencies to protect vulnerable adults from abuse and neglect. The report covers a range of areas, including efforts to improve outcomes for at-risk adults, case reviews, safeguarding training, performance quality assurance, and progress against priorities. By providing a transparent assessment of multi-agency safeguarding activity, the report aims to demonstrate the strength of the safeguarding arrangements in the Bradford District. The report is presented on behalf of the three statutory safeguarding partners, the Local Authority, West Yorkshire Police, and Integrated Care Board, who are jointly responsible for the safeguarding partnership arrangements. The full report can be found at **Appendix B**

2. BACKGROUND

- 2.1 The Bradford Safeguarding Adults Board (BSAB) is legally required to complete an annual report under the Care Act 2014. The Act requires local authorities and their partners to work together to set up Safeguarding Adults Boards to oversee and coordinate safeguarding activities in their areas.
- 2.2 The annual report is an essential component of the Board's statutory responsibilities. It helps ensure that all partner agencies are accountable for their safeguarding activities and that there is transparency in how those activities are carried out. The report provides an opportunity for the Board to evaluate the effectiveness of its safeguarding arrangements and initiatives, identify any gaps in service provision, and set priorities for future action. By sharing this information with the public and stakeholders, the Board can promote transparency, build trust, and demonstrate its commitment to safeguarding adults at risk of abuse and neglect. Moreover, completing an annual report enables the Board to demonstrate its accountability to the public and its partners by showing how it has used its resources and fulfilled its obligations over the reporting period.
- 2.3 The BSAB annual report 2022/23 provides a comprehensive overview of the Board's strategic vision, outcomes, and priorities. By outlining these key elements, the report helps ensure that all partner agencies are aligned and working towards safeguarding adults at risk of abuse and neglect. Additionally, the report serves as a reminder of the BSAB's responsibilities and the important role that each partner agency plays in achieving its objectives.
- 2.4 In addition to outlining the strategic vision, outcomes, and priorities, the annual report provides information on the internal structures and governance that hold partner agencies accountable. By providing this information, the report helps to promote transparency and ensure that all partner agencies are working collaboratively towards the same goal of safeguarding adults at risk.
- 2.5 The BSAB annual report includes information on the achievement of its sub-groups, which are responsible for delivering specific areas of work. This information provides key insights into the BSAB's activities and initiatives and the emerging challenges and risks that partner agencies face. By identifying these challenges

and risks, the BSAB can work to address them proactively and ensure that safeguarding remains a priority.

2.6 The BSAB annual report details the activities of its subgroups. However, **Appendix A** serves as a crucial section for a more focused understanding. It offers an overview of adult safeguarding, elucidating its fundamental concepts and principles. Additionally, this appendix delves into the specific operations of the adult safeguarding team in Bradford, providing insights into their methodologies and approaches to ensuring the safety and well-being of adults in the community.

2.7 Finally, the BSAB annual report 2022/23 includes information and learning on Safeguarding Adults Reviews (SARs) and performance data collected throughout the reporting period. This information provides a comprehensive overview of the Board's activities and initiatives and its performance in achieving its objectives. By sharing this information, the report promotes accountability and transparency, enabling the Board to demonstrate its commitment to safeguarding adults at risk of abuse and neglect.

3. OTHER CONSIDERATIONS

Nil

4. FINANCIAL & RESOURCE APPRAISAL

4.1 The Bradford Safeguarding Adults Board is funded by a range of partner agencies, with financing responsibility lying jointly with the three statutory partners: the Local Authority, West Yorkshire Police, and the Integrated Care Board . These partners are equally responsible for funding the Board's activities. The budget for the BSAB is reviewed annually and discussed with the partner agencies to ensure sufficient funding is available to support the Board's work in safeguarding adults at risk.

5. RISK MANAGEMENT AND GOVERNANCE ISSUES

Nil

6. LEGAL APPRAISAL

6.1 The Care Act 2014 requires Safeguarding Adults Boards to publish an annual report. This report demonstrates our compliance with this duty. The report is published on the SaferBradford website.

7. OTHER IMPLICATIONS

7.1 SUSTAINABILITY IMPLICATIONS

Nil

7.2 TACKLING THE CLIMATE EMERGENCY IMPLICATIONS

Nil

7.3 COMMUNITY SAFETY IMPLICATIONS

- 7.31 The Bradford Community Safety Partnership (CSP) and Safeguarding Adults Board (SAB) are essential collaborators in protecting the community's most vulnerable individuals. The implications for the SAB's 2022/23 annual report show enhanced cooperation and communication between these entities, sharing knowledge, resources, and best practices to mitigate identified risks effectively. BSAB & CSP intend to explore overlapping areas of responsibility. Continued opportunities may exist to refine roles or develop joint strategies for more impactful community safeguarding.
- 7.32 The Serious Violence Duty will require local authorities, the police, fire and rescue authorities, specified criminal justice agencies and health authorities to work together to formulate an evidence based analysis of the problems associated with serious violence in a local area, and then produce and implement a strategy detailing how they will respond to those particular issues.
- 7.33 Across West Yorkshire we are adopting a public health approach to reducing violence and seek to identify the common risk factors driving violence and the protective factors preventing violence. This encourages identification of these factors and implementing interventions across all levels: individual, relationship, community and societal, at the same time.
- 7.34 The public health approach to violence reduction has dedicated research and evidence at its core and addresses the inequalities that can lead to involvement in serious violence.

7.4 HUMAN RIGHTS ACT

Nil

7.5 TRADE UNION

Nil

7.6 WARD IMPLICATIONS

Nil

7.7 AREA COMMITTEE LOCALITY PLAN IMPLICATIONS

N/A

7.8 IMPLICATIONS FOR CHILDREN AND YOUNG PEOPLE

N/A

7.9 ISSUES ARISING FROM PRIVACY IMPACT ASSESMENT

Nil

8. NOT FOR PUBLICATION DOCUMENTS

Nil

9. OPTIONS

- 9.1 No other option considered as it is a statutory duty for BSAB to publish an annual report.

10. RECOMMENDATIONS

10.1 The Committee is requested to note the Annual Report 2022/23

10.2 The Committee to receive another report in 12 months' time.

11. APPENDICES

11.1 **Appendix A – Adult Safeguarding Bradford District**

11.2 **Appendix B – BSAB Annual Report 2022/2023**

12. BACKGROUND DOCUMENTS

Nil

Appendix A – Adult Safeguarding – Bradford District

Operational Adult Safeguarding CBMDC

Context

Adult safeguarding is defined as *‘protecting an adult’s right to live in safety, free from abuse and neglect’* (Care and Support Statutory Guidance). The CBMDC Safeguarding Adults Service provides a front-door through which all adult safeguarding concerns reported to the council are received and then screened against the Care Act 2014 section 42 statutory decision-making criteria which states that where the Council has *reasonable cause to suspect* that a person (i) has care and support needs, (ii) is experiencing or at risk of abuse and neglect, and (iii) because of their care and support needs they are unable to protect themselves from either the abuse or neglect, or the risk of it, the local authority (iv) must cause enquiries to be made so that it can (v) decide on any action that needs to be taken and who needs to undertake it.

The Safeguarding Adults Service operates district-wide covering all service user groups. Operation is in line with the June 2021 Joint Multi-Agency Safeguarding Adults Policy and Procedures (Bradford, Calderdale, Kirklees, North Yorkshire, Wakefield, and York).

We aspire to safe, legal, rights-based practice which is driven by a Making Safeguarding Personal ethos. The service has a culture of high support, critical reflection, and continuous improvement. Last year 2022/23 the service received 6264 safeguarding concerns. Of these, 2591 became s42 enquiries giving an average conversion rate of 41%.

Safeguarding Adults Service Operational Teams

The Safeguarding Adults Service comprises three separate teams with distinct remits.

The first is the Safeguarding Duty Team which, under Stage 2 of the procedures, provides an initial response to all concerns received by the department. Concerns are screened and the immediate safety needs of the Adult are assessed. If all necessary and appropriate action has been taken, and the section 42 duty has been fulfilled, safeguarding enquiries will be concluded at stage 2 wherever possible. Safeguarding concerns are typically screened within 24 hours of receipt and cases are allocated as required meaning there are no waiting lists.

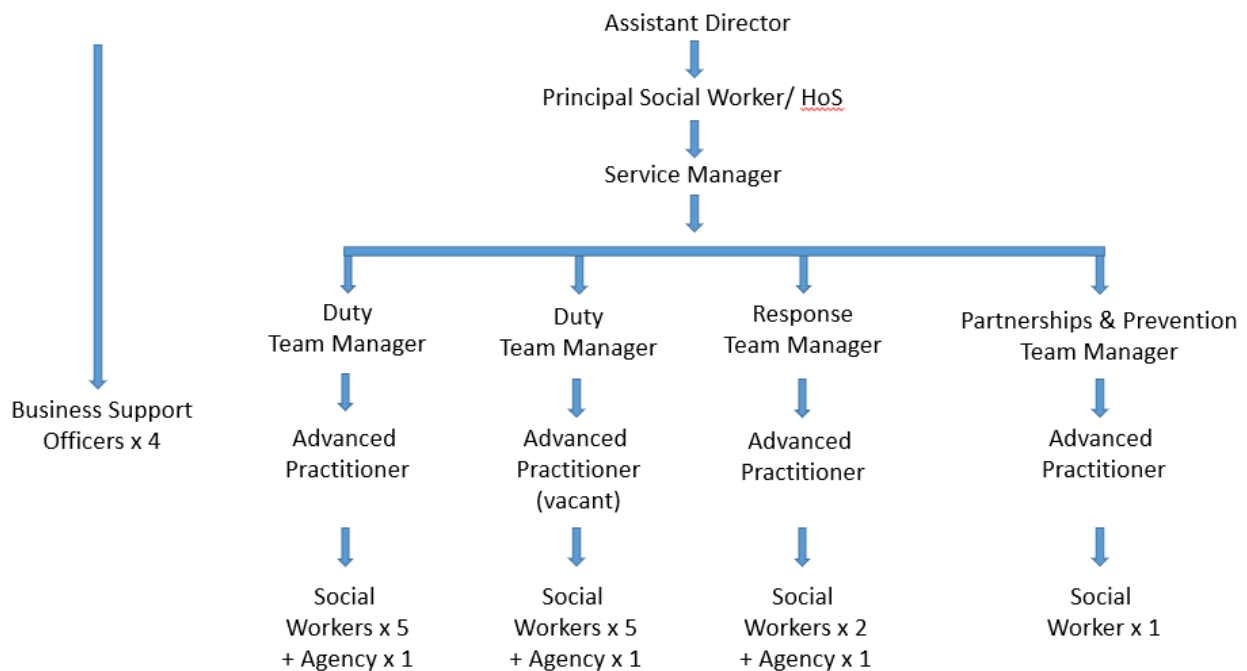
The second team is the Safeguarding Response Team which operates at Stages 3 and 4 of the procedure and carries out more complex or longer-term safeguarding enquiries involving provider and partner organisations. These safeguarding enquiries may require coordination of wider agencies or in-depth analysis of documentation and evidence. Partner organisations are sometimes requested to undertake enquiries on our behalf. These are called Delegated Enquiries.

Where a safeguarding concern cannot be concluded at Stage 2 and needs to progress to Stage 3, but where the person alleged to have caused harm is not part of an organisation i.e. they are a friend, stranger, neighbour or somebody else from the wider community, these safeguarding enquiries are passed to the appropriate Community Mental Health Team, Older People’s Assessment & Support Team, or Community Team for Learning Disabilities to continue the safeguarding enquiry.

The Safeguarding Partnerships and Prevention Team is a third smaller team which oversees the Organisational Safeguarding Enquiry process which makes enquiries into allegations of organisational or institutional abuse. An Organisational Safeguarding Enquiry is a multi-agency coordinated approach to working with whole organisations to ensure people receive safe treatment and are protected from abuse and neglect. Individual safeguarding concerns are reviewed for patterns and trends which could indicate the need for an Organisational Safeguarding Enquiry. Equally, the team is open to receiving referrals from partners across the system. The Partnerships and Prevention Team also leads on developing the service's preventative approach and currently offers a bespoke briefing session which aims to raise awareness of adult safeguarding issues and the local operating arrangements.

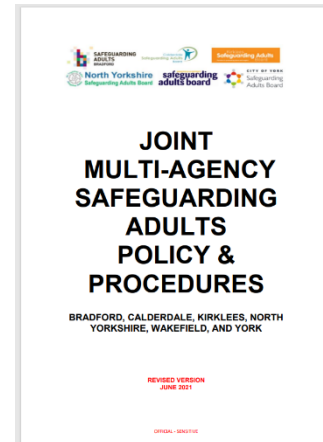
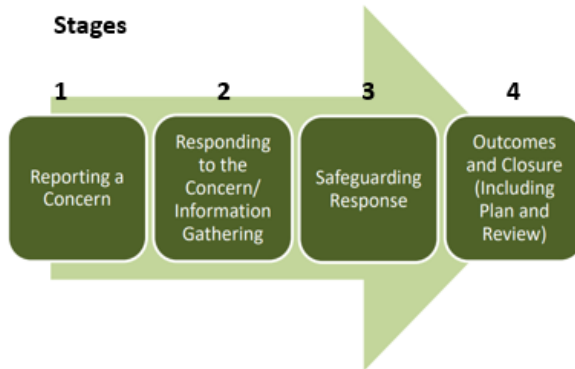
Driven by the Council and Department of Adult Social Care's commitment to tackling adult abuse the department has invested heavily in the Safeguarding Adults Service over recent years. This has enabled us to continue supporting people during a difficult socio-economic period and deal with the impact and aftermath of Covid-19. The Safeguarding Adults Service is currently staffed as follows: one service manager, four team managers, four advanced practitioners, and thirteen social workers. There are four business support officers also linked to the service.

Service structure



Policy and procedures

Joint Multi-agency Safeguarding Adults Policy and Procedures
Four stage process:



Operational process

Safeguarding concerns can be submitted to the Safeguarding Adults Service online at www.saferbradford.co.uk/adults. Concerns can be submitted as either the individual being abused or neglected, a professional or organisation, or as a friend/ relative/ neighbour/ concerned member of the public etc.

Safeguarding concerns can also be reported directly to the Safeguarding Adults Service using the email address safeguarding.bradford@gov.uk or by telephone on 01274 431077. Safeguarding concerns received by the Independence Advice Hub are directed to the Safeguarding Adults Service.

Once received, all concerns are linked to the Adult's main record on the national SystemOne database. This gives access to any other information held on the system by the Department of Adult Social Care, along with some information uploaded by NHS agencies who also use SystemOne (where prior consent to share information has been obtained from the Adult).

To support decision making the starting point is to ascertain the views and wishes of the Adult at the centre of the safeguarding concern. Information is reviewed and then shared with or obtained from professional partners as necessary. This includes the police, Trading Standards, Contracts and Quality teams within the Council and the Bradford District and Craven Health and Care Partnership, NHS trust organisations across the district, the Care Quality Commission, and voluntary and third sector organisations.

The Safeguarding Adults Service works closely with organisations where complex or large numbers of safeguarding issues occur and where it is identified that additional support or guidance can be provided. This can include delivering training directly to staff or by providing a linked worker who will maintain regular contact with the managers in the organisation. This is usually an Advanced Practitioner from the service and has been utilised recently to help engage with Cygnet hospitals in the district where weekly meetings were held to review incidents and the action taken to reduce risk. This usually also includes the Advanced Practitioner liaising with placing commissioners.

The outcome of safeguarding enquires varies as this is usually dictated by the Adult at the centre of the safeguarding concern and is based on the changes they want to make. A standard aim is to work with the Adult and others to reduce or eliminate the risk of further abuse or neglect.

Intelligence sharing

Outside of specific Organisational Safeguarding Enquiries and day-to-day contact there are different forums which the Safeguarding Adults Service attends as a partner where system-wide information is shared and obtained. We are present at the monthly Serious Concerns Process meeting chaired by the Council's Contracts and Quality Team, we attend the monthly Host Commissioner Meeting chaired by Bradford District and Craven Health and Care Partnership, and we coordinate a fortnightly meeting between operational adult safeguarding colleagues in the police and the Safeguarding Adults Service managers.

Reporters of safeguarding concerns and prevalence of abuse

In the year 2022/23 the agencies reporting the most safeguarding concerns was first the Care Quality Commission, second the Yorkshire Ambulance Service and third social workers within the Department of Adult Social Care.

The most prevalent types of abuse reported in all safeguarding concerns were 1, physical abuse, 2, neglect and acts of omission, 3, other, 4, financial or material, and 5, psychological